



PARTS LIST

CLADDING PROFILES

- ACV136-XXX58** INDENT - AliClad V150, 150x25 V Shiplap Weatherboard, 5.8m, Mill Finish
ACV200-XXX58 INDENT - AliClad V200, 200x25 V Shiplap Weatherboard, 5.8m, Mill Finish
ACS150-XXX58 INDENT - AliClad S150, 150x25 Shadow Groove Weatherboard, 5.8m, Mill Finish
ACS200-XXX58 INDENT - AliClad S200, 200x25 Shadow Groove Weatherboard, 5.8m, Mill Finish
ACS200-65-XXX58 INDENT - AliClad S200-65, 200x25 Shadow Groove Weatherboard with 65mm & 125mm board look, 5.8m, Mill Finish

2 PIECE BASE CLIPS

- ACHMDBF-58** AliClad - H Mould Base, 5.8m, Mill Finish
ACJMDBF-58 AliClad - J-Mould Base, 5.8m, Mill Finish
ACINTBF-58 AliClad - Internal Corner Base, 5.8m, Mill Finish
ACEXTBF-58 AliClad - External Corner Base, 5.8m, Mill Finish

2 PIECE FACES & TRIMS

- ACINTFF-XXX58** INDENT - AliClad - Internal Corner Face, 5.8m, Mill Finish
ACWNS-XXX58 INDENT - AliClad - Window Sill Face, - to suit WANZ supported window, 5.8m, Mill Finish
ACWNSP-XXX58 INDENT - AliClad - Window Sill Face - to suit Punched Window, 5.8m, Mill Finish
ACJMDF-XXX58 INDENT - AliClad - J Mould Face, 5.8m, Mill Finish
ACHMDF-XXX58 INDENT - AliClad - H Mould Face, 5.8m, Mill Finish
ACEXTFF-XXX58 INDENT - AliClad - External Corner Face, 5.8m, Mill Finish
ACJMDF-XXX58 INDENT - AliClad - Bottom of Cladding Base, 5.8m, Mill Finish

JUNCTION ELEMENTS

- ACCZD-58** AliClad - Clamp Zed, 5.8m, Mill Finish
ACCLC-58 AliClad - Clamp Channel, 5.8m, Mill Finish
ACSTR-58 AliClad - Starter Rail, 5.8m, Mill Finish
ACJMC-58 AliClad - Jamb Clip, 5.8m, Mill Finish
ACJMF-58 AliClad - Jamb Flashing, 5.8m, Mill Finish

MECHANICAL DRAINAGE SYSTEM

- ACJMT-01RIGHT** AliClad - Type 1a Jamb Tray Right
ACJMT-01LEFT AliClad - Type 1b Jamb Tray Left
ACJMT-02RIGHT AliClad - Type 2a Jamb Tray Right
ACJMT-02LEFT AliClad - Type 2b Jamb Tray Left

ALPHA RAIL SUPPORT SYSTEM PROFILES

- ARSPC10-05** Alpha Rail Packer Clip 10mm, 50mm MILL FINISH
ARSPC5-05 Alpha Rail Packer Clip 5mm, 50mm MILL FINISH
ARSPC3-05 Alpha Rail Packer Clip 3mm, 50mm MILL FINISH
ARSPC1-05 Alpha Rail Packer Clip 1.6mm, 50mm MILL FINISH
ARSVR20-58 Alpha Rail Vertical Rail 20mm, 5.8m MILL FINISH
ARSHR20-58 Alpha Rail Horizontal Rail 20mm, Punched, 5.8m MILL FINISH

ALICLAD - Parts List

Detail Number

AC-Part List

Version

[v1] Dec. 2021



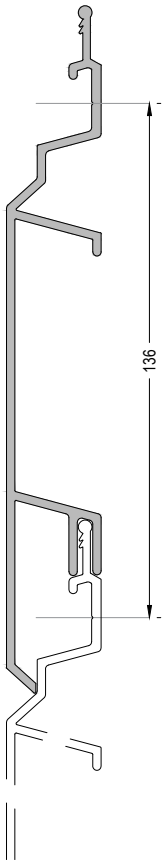
MATERIALS • SYSTEMS • SOLUTIONS

CLADDING PROFILES

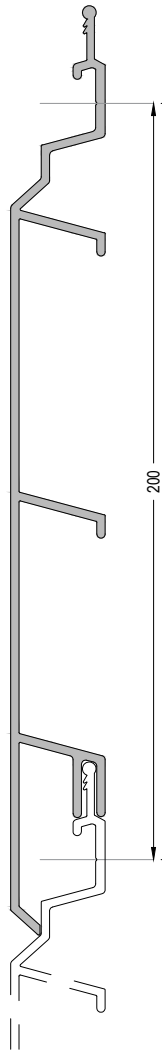
HIGH PERFORMANCE ALUMINIUM
WEATHERBOARD SYSTEM

2.1

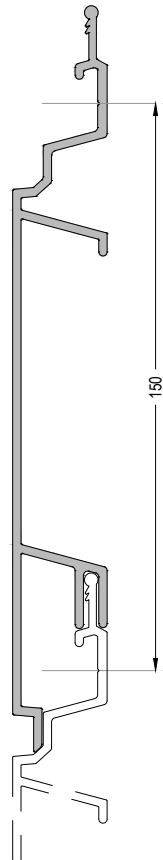
VI36



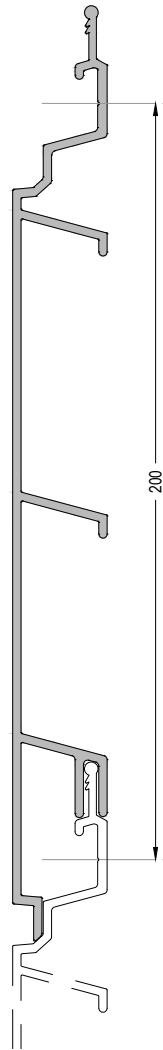
V200



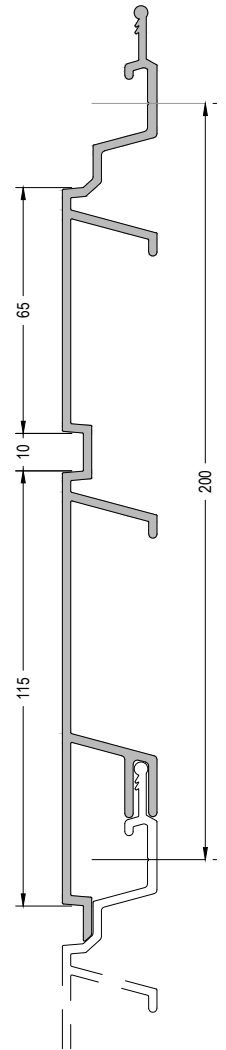
SI50



S200



S200-65



ALICLAD Cladding Profiles

Detail Number

AC-pro-01

Version

[v1] Dec. 2021



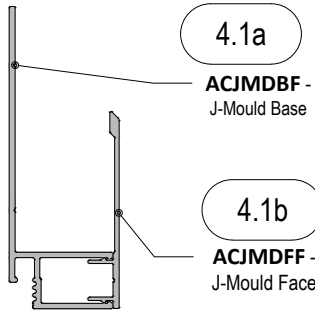
MATERIALS • SYSTEMS • SOLUTIONS

ALICLAD

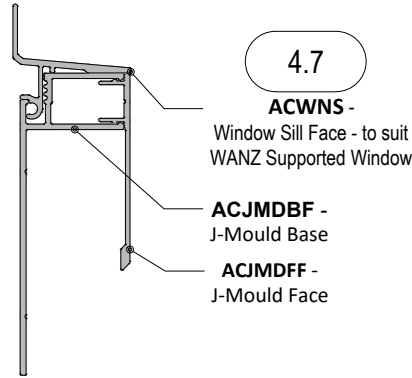
EXTRUSIONS

TYPICAL ASSEMBLIES

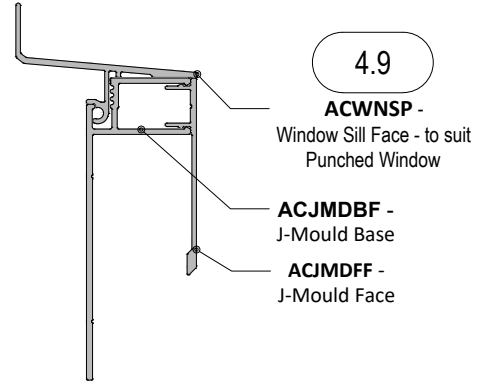
J-MOULD



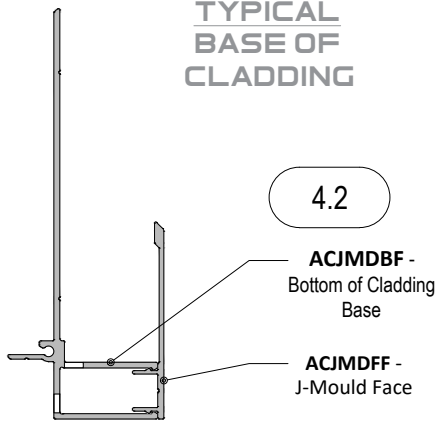
WANZ WINDOW SILL



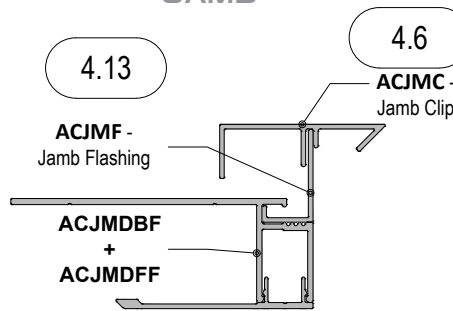
PUNCHED WINDOW SILL



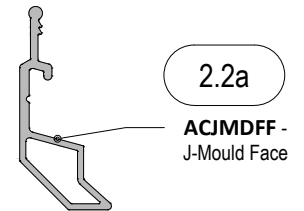
TYPICAL BASE OF CLADDING



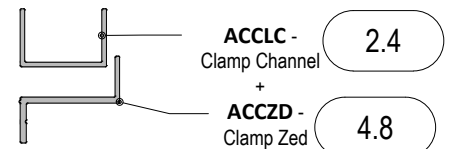
TYPICAL JAMB



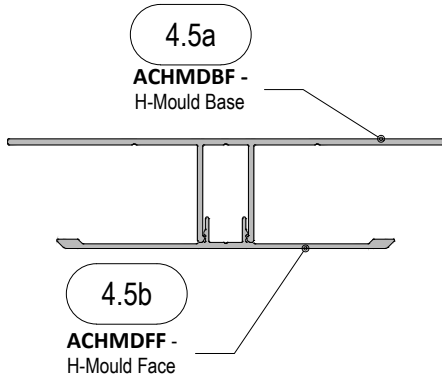
STARTER



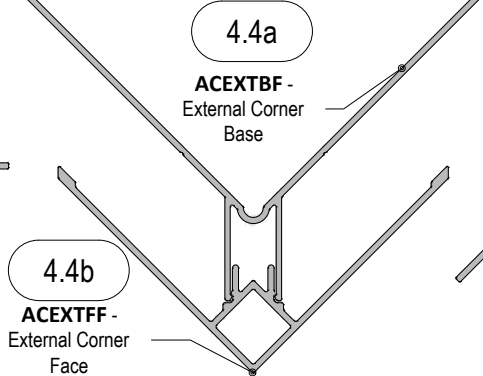
ENDER



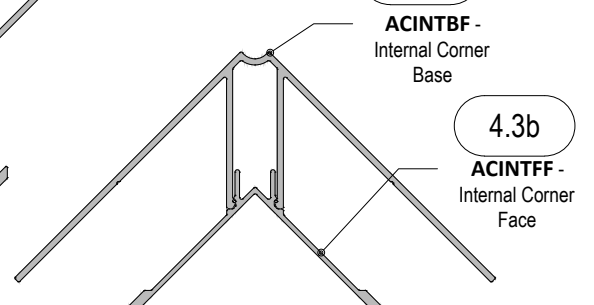
TYPICAL VERTICAL H-JOINT



EXTERNAL CORNER



INTERNAL CORNER



ALICLAD Accessories

Detail Number

AC-ACC-01

Version

[v1] Dec. 2021

BA THE BUILDING AGENCY

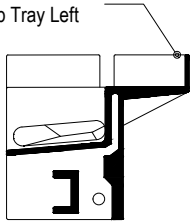
MATERIALS • SYSTEMS • SOLUTIONS

MECHANICAL DRAINAGE

PROPRIETARY JAMB-TO-SILL DRAINAGE CLIPS

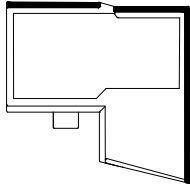
TYPE I - FOR WINDOWS USING WANZ BAR SUPPORT

ACJMT-01LEFT -
Type 1 Jamb Tray Left



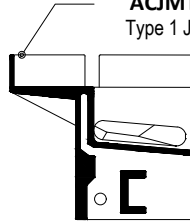
SECTION

4.11a

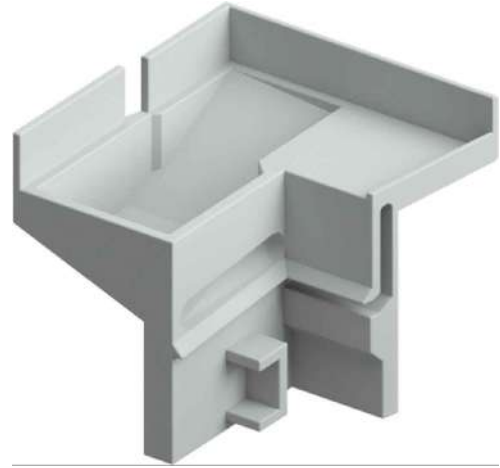
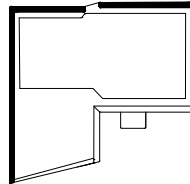


PLAN

ACJMT-01RIGHT -
Type 1 Jamb Tray Right

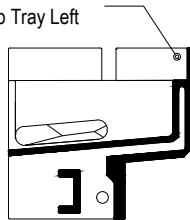


4.11b



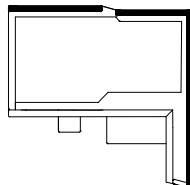
TYPE II - FOR PUNCHED OR RECESSED WINDOWS

ACJMT-02LEFT -
Type 2 Jamb Tray Left



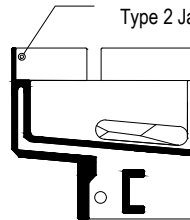
SECTION

4.12b

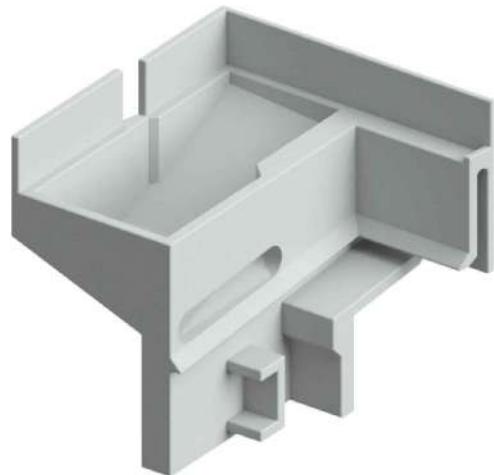
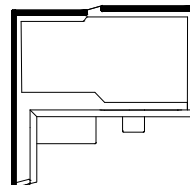


PLAN

ACJMT-02RIGHT -
Type 2 Jamb Tray Right



4.12a

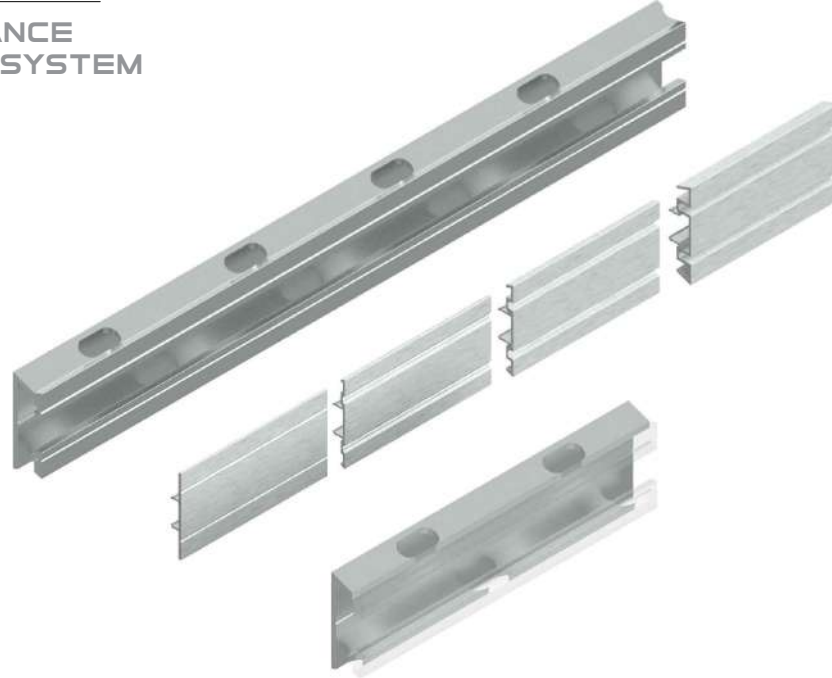


ALICLAD

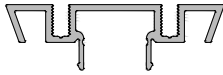


ALPHA RAIL SYSTEM

HIGH PERFORMANCE
ALUMINIUM BATTEN SYSTEM
PROFILES

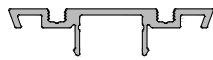


3.1d



ALPHA CLIP 10MM
Order Code: AR-Clip100

3.1c



ALPHA CLIP 5MM
Order Code: AR-Clip50

3.1b



ALPHA CLIP 3MM
Order Code: AR-Clip30

3.1a



ALPHA CLIP 1.6MM
Order Code: AR-Clip16

3.1



ALPHA RAIL 20MM - 5.8LM
Order Code: AR-Rail20

3.1



ALPHA RAIL 20MM - 5.8LM
Order Code: AR-Rail20-Drained

Alpha Rail System

Detail Number

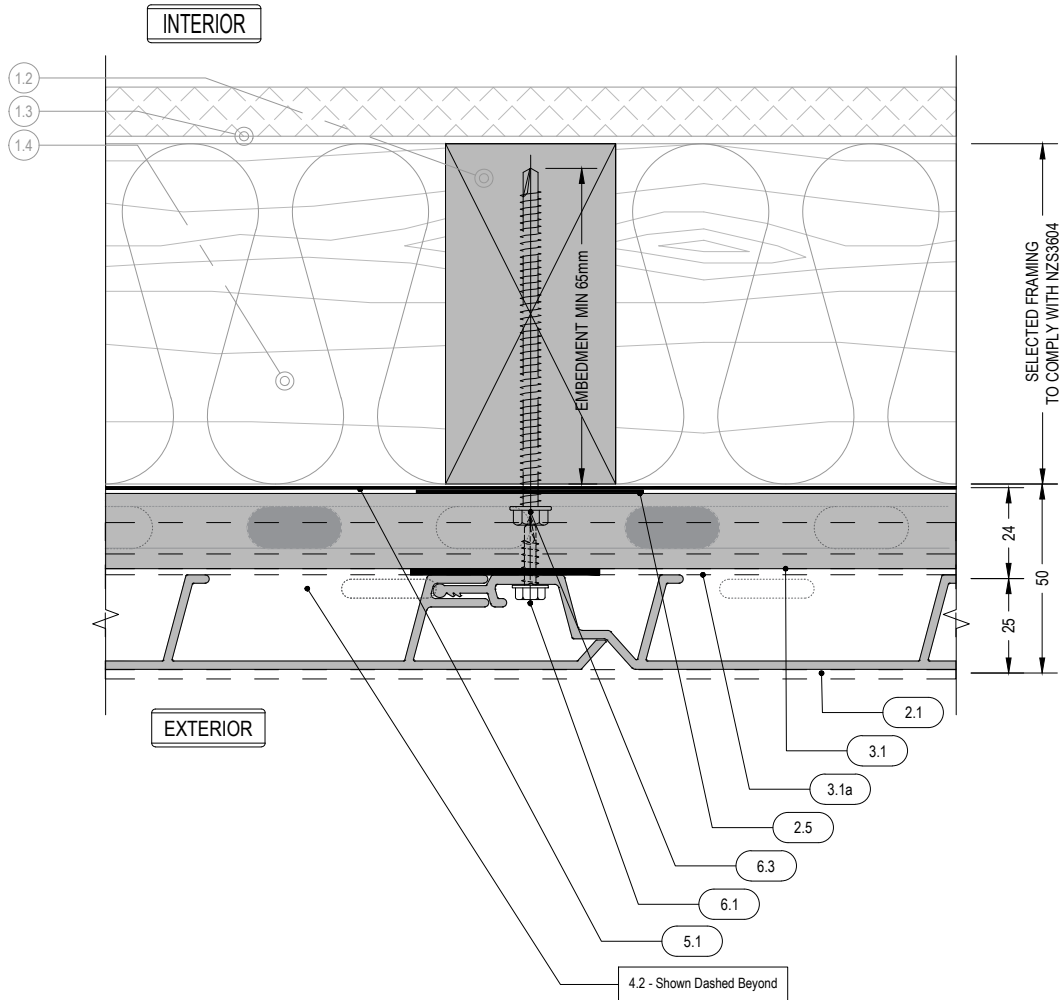
AC-ACC-03

Version

[v1] Dec. 2021



MATERIALS • SYSTEMS • SOLUTIONS



1. Structure : By Others

- 1.1 Concrete
- 1.2 Timber
- 1.3 Internal Lining
- 1.4 Insulation
- 1.5 Fibre Cement RWU
- 1.6 Window Joinery
- 1.7 Approved Sealant on PEF Rod to suit gap

2.0 ALCIAD Elements :

- 2.1 ALCIAD Vertical Shiplap Weatherboard Cladding
- 2.2a AC-Starter - Std. MILL
- 2.4 AC-Clamp Channel - Std. MILL
- 2.5 Butyl Pad

3.0 Cladding Support Elements :

- 3.1 AlphaRail20 - 20mm Aluminium Cavity Battens
- 3.1a AlphaClip - All 1.6mm Packer
- 3.1b AlphaClip3 - All 3mm Packer
- 3.1c AlphaClip5 - All 5mm Packer
- 3.1d AlphaClip10 - All 10mm Packer

4.0 BA-2Pc Flashing & Junction Elements :

- 4.1a J-Mould Base - PC on Request
- 4.1b J-Mould Face - Std. Range PC
- 4.2 Drained BOC Base - PC on Request
- 4.3a Internal Corner Base - Std. MILL

4.3b Internal Corner Face - Std. Range PC

- 4.4a External Corner Base - Std. MILL
- 4.4b External Corner Face - Std. Range PC
- 4.5a Vertical Jointer Base - Std. MILL
- 4.5b Vertical Jointer Face - Std. Range PC
- 4.6 Jamb Clip - Std. MILL
- 4.7 Sill Clip Face - Flush Window - Std. Range PC
- 4.8 BigZed - Std. MILL
- 4.9 Sill Clip Face - Punch Window - Std. Range PC
- 4.10 Vermin Flashing - PC on Request

4.11a Type 1 Jamb Tray Right - With WANZ

- 4.11b Type 1 Jamb Tray Left - With WANZ
- 4.12a Type 2 Jamb Tray Left - Without WANZ
- 4.12b Type 2 Jamb Tray Left - Without WANZ

5.0 Suggested Membrane & Tapes :

- 5.1 Flexible Vapour Open - WRB
- 5.2 Sill Tape -150mm
- 5.3 Fabric Flashing Tape - 60mm
- 5.4 Wet Seal Adhesion Tape
- 6.0 Fixings
- 6.1 SS304 10gx20mm HexTekSD Screw 10mm Hex
- 6.2 SS304 8gx35mm PH SD Screw #2 Sq.Dr
- 6.3 SS304 12gx90mm Hextek Screw 10mm Hex
- 6.4 SS304 M6 x 75mm HARDTEC Screwbolt 9mm Hex Dr.
- 6.5 SS304 6g x 16mm CSK SD ST Screw
- 6.6 SS304 6g x 16mm PAN SD ST Screw

7.0 Aluminium Flashings

- 7.1 Jamb Flashing - Std. Range PC
- 7.2 AL 1.6mm Custom Folded
- 7.3 AL 1.8mm Custom Folded

Vertical Joint

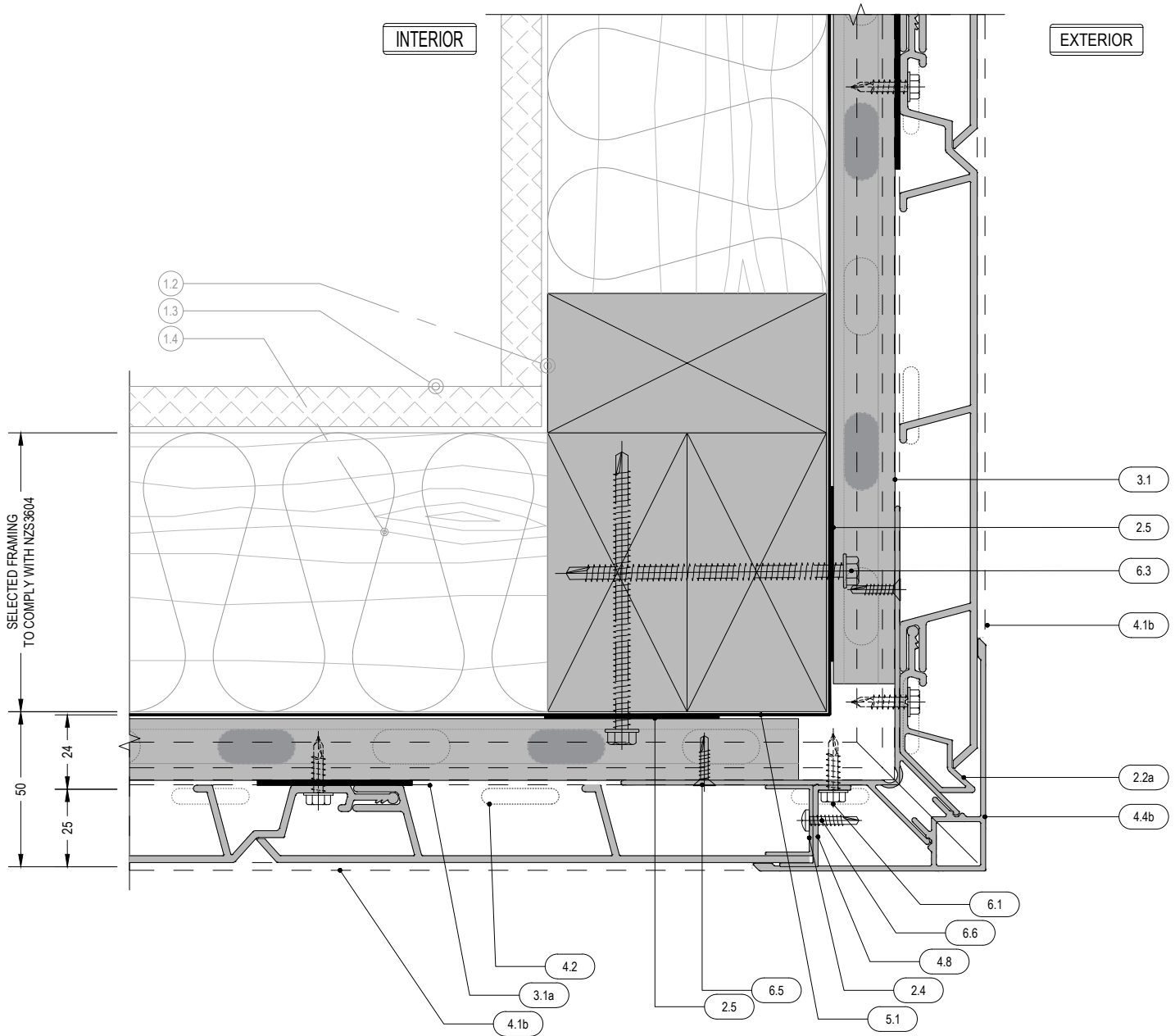
Detail Number

AC-V-01

Version

[v1] Dec. 2021

ALICLAD



1. Structure : By Others

- 1.1 Concrete
- 1.2 Timber
- 1.3 Internal Lining
- 1.4 Insulation
- 1.5 Fibre Cement RWU
- 1.6 Window Joinery
- 1.7 Approved Sealant on PEF Rod to suit gap

2.0 AIClAd Elements :

- 2.1 AIClAd Vertical Shiplap Weatherboard Cladding
- 2.2a AC-Starter - Std. MILL
- 2.4 AC-Clamp Channel - Std. MILL
- 2.5 Butyl Pad

3.0 Cladding Support Elements :

- 3.1 AlphaRail20 - 20mm Aluminium Cavity Battens
- 3.1a AlphaClip - All 1.6mm Packer
- 3.1b AlphaClip3 - All 3mm Packer
- 3.1c AlphaClip5 - All 5mm Packer
- 3.1d AlphaClip10 - All 10mm Packer

4.0 BA-2Pc Flashing & Junction Elements :

- 4.1a J-Mould Base - PC on Request
- 4.1b J-Mould Face - Std. Range PC
- 4.2 Drained BOC Base - PC on Request
- 4.3a Internal Corner Base - Std. MILL

4.3b Internal Corner Face - Std. Range PC

- 4.4a External Corner Base - Std. MILL
- 4.4b External Corner Face - Std. Range PC
- 4.5a Vertical Joiner Base - Std. MILL
- 4.5b Vertical Joiner Face - Std. Range PC
- 4.6 Jamb Clip - Std. MILL
- 4.7 Sill Clip Face - Flush Window - Std. Range PC
- 4.8 BigZed - Std. MILL
- 4.9 Sill Clip Face - Punch Window - Std. Range PC
- 4.10 Vermin Flashing - PC on Request

4.11a Type 1 Jamb Tray Right - With WANZ

- 4.11b Type 1 Jamb Tray Left - With WANZ
- 4.12a Type 2 Jamb Tray Left - Without WANZ
- 4.12b Type 2 Jamb Tray Left - Without WANZ

5.0 Suggested Membrane & Tapes :

- 5.1 Flexible Vapour Open - WRB
- 5.2 Sill Tape -150mm
- 5.3 Fabric Flashing Tape - 60mm
- 5.4 Wet Seal Adhesion Tape
- 6.0 Fixings
- 6.1 SS304 10gx20mm Hex-TekSD Screw 10mm Hex
- 6.2 SS304 8gx35mm PH SD Screw #2 Sq.Dr
- 6.3 SS304 12gx90mm Hextek Screw 10mm Hex
- 6.4 SS304 M6 x 75mm HARDTEC Screwbolt 9mm Hex Dr.
- 6.5 SS304 6g x 16mm CSK SD ST Screw
- 6.6 SS304 6g x 16mm PAN SD ST Screw

7.0 Aluminium Flashings

- 7.1 Jamb Flashing - Std. Range PC
- 7.2 AL 1.6mm Custom Folded
- 7.3 AL 1.8mm Custom Folded

External Corner

Detail Number

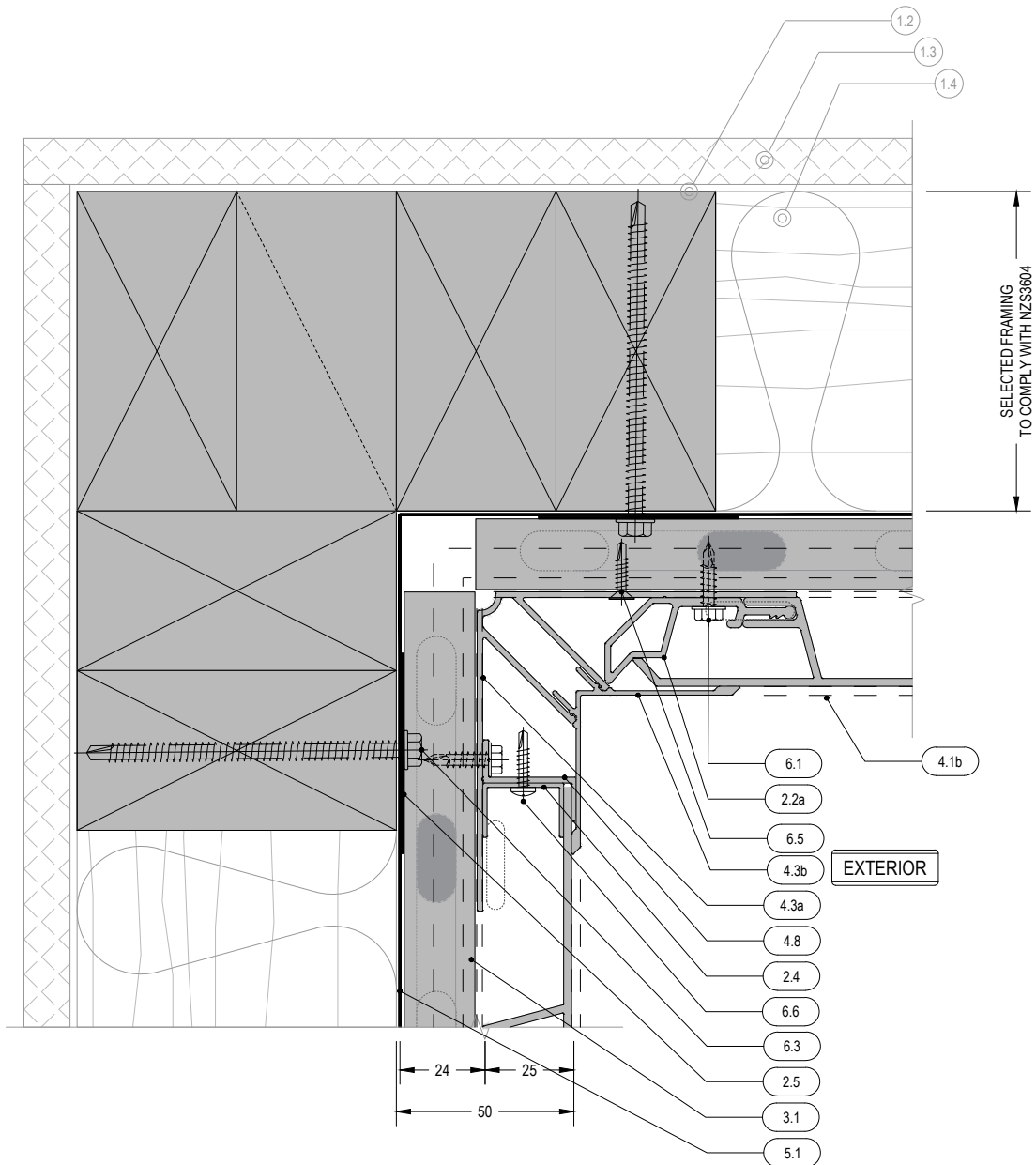
AC-V-03

Version

[v1] Dec. 2021



MATERIALS • SYSTEMS • SOLUTIONS



1. Structure - By Others

- 1.1 Concrete
- 1.2 Timber
- 1.3 Internal Lining
- 1.4 Insulation
- 1.5 Fibre Cement RWU
- 1.6 Window Joinery
- 1.7 Approved Sealant on PEF Rod to suit gap

2.0 AiClad Elements :

- 2.1 AiClad Vertical Shiplap Weatherboard Cladding
- 2.2a AC-Starter - Std. MILL
- 2.4 AC-Clamp Channel - Std. MILL
- 2.5 Butyl Pad
- 3.0 Cladding Support Elements :
- 3.1 AlphaRail20 - 20mm Aluminium Cavity Battens
- 3.1a AlphaClip - All 1.6mm Packer
- 3.1b AlphaClip3 - All 3mm Packer
- 3.1c AlphaClip5 - All 5mm Packer
- 3.1d AlphaClip10 - All 10mm Packer
- 4.0 BA-2Pc Flashing & Junction Elements :
- 4.1a J-Mould Base - PC on Request
- 4.1b J-Mould Face - Std. Range PC
- 4.2 Drained BOC Base - PC on Request
- 4.3a Internal Corner Base - Std. MILL

- 4.3b Internal Corner Face - Std. Range PC
- 4.4a External Corner Base - Std. MILL
- 4.4b External Corner Face - Std. Range PC
- 4.5a Vertical Joiner Base - Std. MILL
- 4.5b Vertical Joiner Face - Std. Range PC
- 4.6 Jamb Clip - Std. MILL
- 4.7 Sill Clip Face - Flush Window - Std. Range PC
- 4.8 BigZed - Std. MILL
- 4.9 Sill Clip Face - Punch Window - Std. Range PC
- 4.10 Vermin Flashing - PC on Request
- 4.11a Type 1 Jamb Tray Right - With WANZ
- 4.11b Type 1 Jamb Tray Left - With WANZ
- 4.12a Type 2 Jamb Tray Left - Without WANZ
- 4.12b Type 2 Jamb Tray Left - Without WANZ

5.0 Suggested Membrane & Tapes :

- 5.1 Flexible Vapour Open - WRB
- 5.2 Sill Tape -150mm
- 5.3 Fabric Flashing Tape - 60mm
- 5.4 Wet Seal Adhesion Tape
- 6.0 Fixings
- 6.1 SS304 10gx20mm HexTekSD Screw 10mm Hex
- 6.2 SS304 8gx35mm PH SD Screw #2 Sq.Dr
- 6.3 SS304 12gx30mm Hextek Screw 10mm Hex
- 6.4 SS304 M6 x 75mm HARDETEC Screwbolt 9mm Hex Dr.
- 6.5 SS304 6g x 16mm CSK SD ST Screw
- 6.6 SS304 6g x 16mm PAN SD ST Screw
- 7.0 Aluminium Flashings
- 7.1 Jamb Flashing - Std. Range PC
- 7.2 AL 1.6mm Custom Folded
- 7.3 AL 1.8mm Custom Folded

Internal Corner

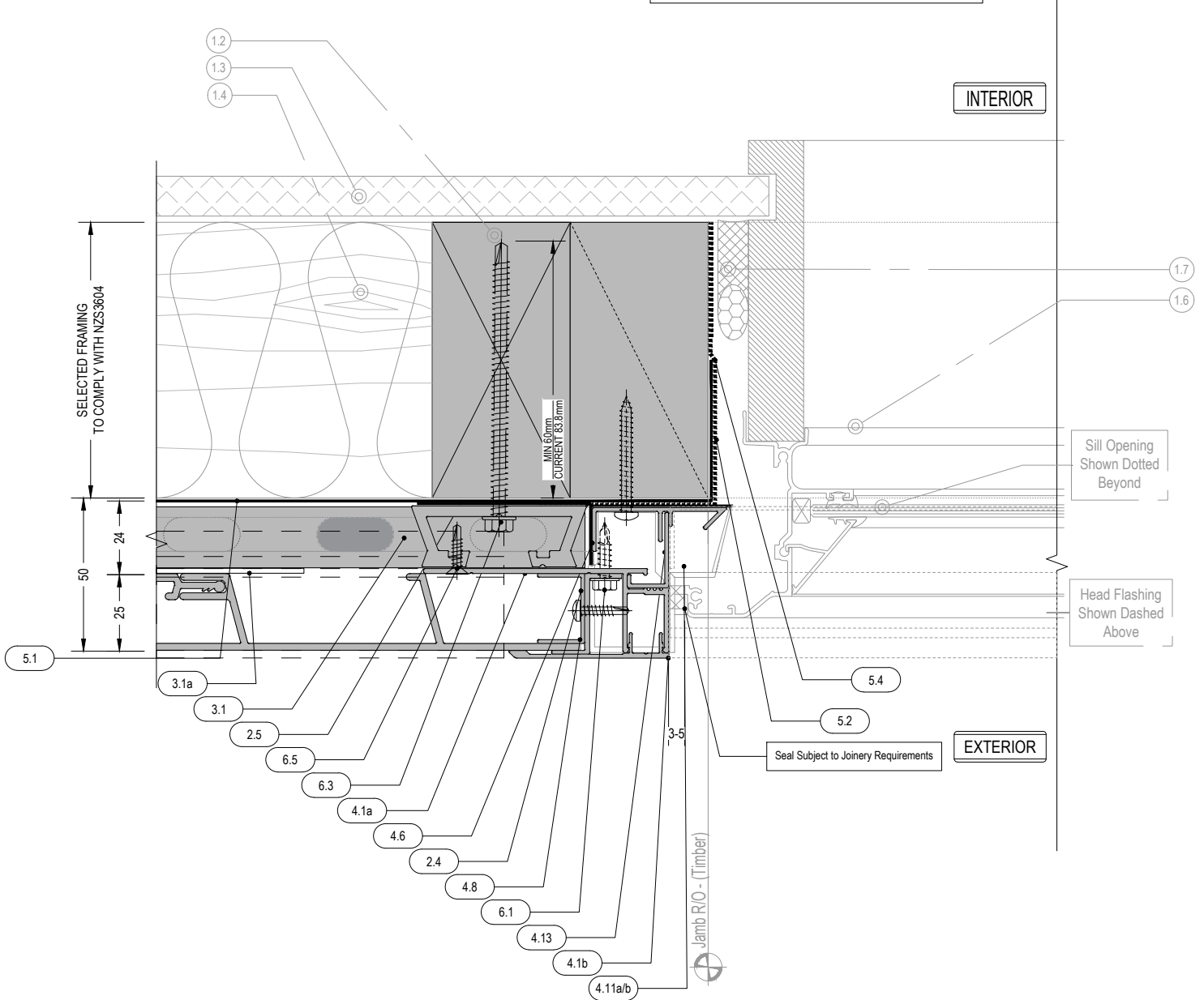
Detail Number

AC-V-03

Version

[v1] Dec. 2021

REFER TO 6.3 FOR WINDOW SILL - JAMB JUNCTION



1. Structure : By Others

- 1.1 Concrete
- 1.2 Timber
- 1.3 Internal Lining
- 1.4 Insulation
- 1.5 Fibre Cement RWU
- 1.6 Window Joinery
- 1.7 Approved Sealant on PEF Rod to suit gap

2.0 AIClAd Elements :

- 2.1 AIClAd Vertical Shiplap Weatherboard Cladding
- 2.2a AC-Starter - Std. MILL
- 2.4 AC-Clamp Channel - Std. MILL
- 2.5 Butyl Pad
- 3.0 Cladding Support Elements :
- 3.1 AlphaRail20 - 20mm Aluminium Cavity Battens
- 3.1a AlphaClip - All 1.6mm Packer
- 3.1b AlphaClip3 - All 3mm Packer
- 3.1c AlphaClip5 - All 5mm Packer
- 3.1d AlphaClip10 - All 10mm Packer

4.0 BA-2Pc Flashing & Junction Elements :

- 4.1a J-Mould Base - PC on Request
- 4.1b J-Mould Face - Std. Range PC
- 4.2 Drained BOC Base - PC on Request
- 4.3a Internal Corner Base - Std. MILL

- 4.3b Internal Corner Face - Std. Range PC
- 4.4a External Corner Base - Std. MILL
- 4.4b External Corner Face - Std. Range PC
- 4.5a Vertical Joiner Base - Std. MILL
- 4.5b Vertical Joiner Face - Std. Range PC
- 4.6 Jamb Clip - Std. MILL
- 4.7 Sill Clip Face - Flush Window - Std. Range PC
- 4.8 BigZed - Std. MILL
- 4.9 Sill Clip Face - Punch Window - Std. Range PC
- 4.10 Vermin Flashing - PC on Request
- 4.11a Type 1 Jamb Tray Right - With WANZ
- 4.11b Type 1 Jamb Tray Left - With WANZ
- 4.12a Type 2 Jamb Tray Left - Without WANZ
- 4.12b Type 2 Jamb Tray Left - Without WANZ

5.0 Suggested Membrane & Tapes :

- 5.1 Flexible Vapour Open - WRB
- 5.2 Sill Tape -150mm
- 5.3 Fabric Flashing Tape - 60mm
- 5.4 Wet Seal Adhesion Tape
- 6.0 Fixings
- 6.1 SS304 10gx20mm Hex-TekSD Screw 10mm Hex
- 6.2 SS304 8gx35mm PH SD Screw #2 Sq.Dr
- 6.3 SS304 12gx90mm Hextek Screw 10mm Hex
- 6.4 SS304 M6 x 75mm HARDTEC Screw/bolt 9mm Hex Dr.
- 6.5 SS304 6g x 16mm CSK SD ST Screw
- 6.6 SS304 6g x 16mm PAN SD ST Screw

7.0 Aluminium Flashings

- 7.1 Jamb Flashing - Std. Range PC
- 7.2 AL 1.6mm Custom Folded
- 7.3 AL 1.8mm Custom Folded

Jamb - W/ WANZ Bar

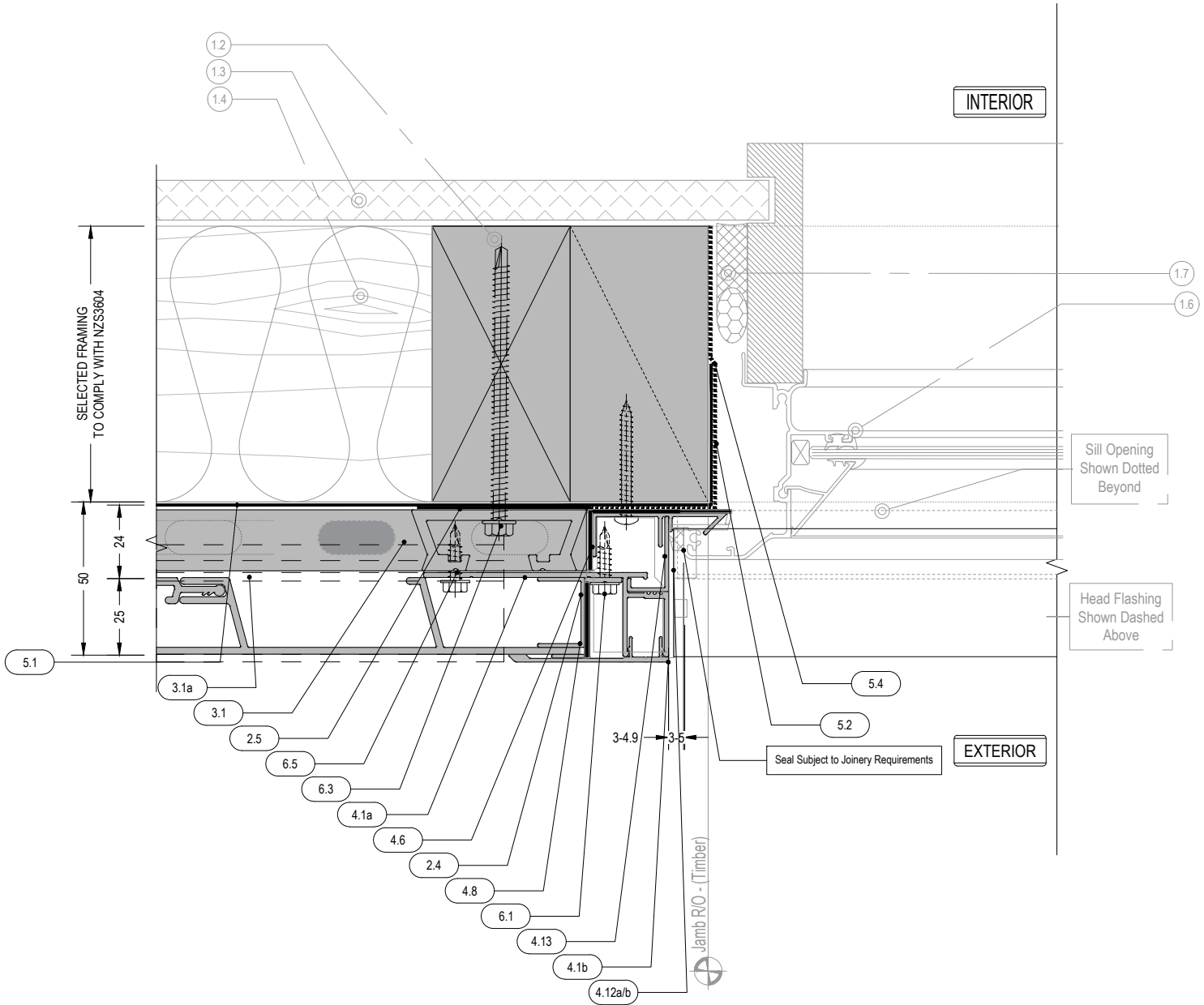
Detail Number

AC-V-04.1

Version

[v1] Dec. 2021

REFER TO 6.4 FOR WINDOW SILL - JAMB JUNCTION



1. Structure : By Others

- 1.1 Concrete
- 1.2 Timber
- 1.3 Internal Lining
- 1.4 Insulation
- 1.5 Fibre Cement RWU
- 1.6 Window Joinery
- 1.7 Approved Sealant on PEF Rod to suit gap

2.0 AIClAd Elements :

- 2.1 AIClAd Vertical Shiplap Weatherboard Cladding
- 2.2a AC-Starter - Std. MILL
- 2.4 AC-Clamp Channel - Std. MILL
- 2.5 Butyl Pad

3.0 Cladding Support Elements :

- 3.1 AlphaRail20 - 20mm Aluminium Cavity Battens
- 3.1a AlphaClip - All 1.6mm Packer
- 3.1b AlphaClip3 - All 3mm Packer
- 3.1c AlphaClip5 - All 5mm Packer
- 3.1d AlphaClip10 - All 10mm Packer

4.0 BA-2Pc Flashing & Junction Elements :

- 4.1a J-Mould Base - PC on Request
- 4.1b J-Mould Face - Std. Range PC
- 4.2 Drained BOC Base - PC on Request
- 4.3a Internal Corner Base - Std. MILL

4.3b Internal Corner Face - Std. Range PC

- 4.4a External Corner Base - Std. MILL
- 4.4b External Corner Face - Std. Range PC
- 4.5a Vertical Joiner Base - Std. MILL
- 4.5b Vertical Joiner Face - Std. Range PC
- 4.6 Jamb Clip - Std. MILL
- 4.7 Sill Clip Face - Flush Window - Std. Range PC
- 4.8 BigZed - Std. MILL
- 4.9 Sill Clip Face - Punch Window - Std. Range PC
- 4.10 Vermin Flashing - PC on Request

4.11a Type 1 Jamb Tray Right - With WANZ

- 4.11b Type 1 Jamb Tray Left - With WANZ
- 4.12a Type 2 Jamb Tray Left - Without WANZ
- 4.12b Type 2 Jamb Tray Left - Without WANZ

5.0 Suggested Membrane & Tapes :

- 5.1 Flexible Vapour Open - WRB
- 5.2 Sill Tape -150mm
- 5.3 Fabric Flashing Tape - 60mm
- 5.4 Wet Seal Adhesion Tape

6.0 Fixings

- 6.1 SS304 10gx20mm Hex-TekSD Screw 10mm Hex
- 6.2 SS304 8gx35mm PH SD Screw #2 Sq.Dr
- 6.3 SS304 12gx90mm Hextek Screw 10mm Hex
- 6.4 SS304 M6 x 75mm HARDTEC Screwbolt 9mm Hex Dr.
- 6.5 SS304 6g x 16mm CSK SD ST Screw
- 6.6 SS304 6g x 16mm PAN SD ST Screw

7.0 Aluminium Flashings

- 7.1 Jamb Flashing - Std. Range PC
- 7.2 AL 1.6mm Custom Folded
- 7.3 AL 1.8mm Custom Folded

Jamb - No WANZ Bar

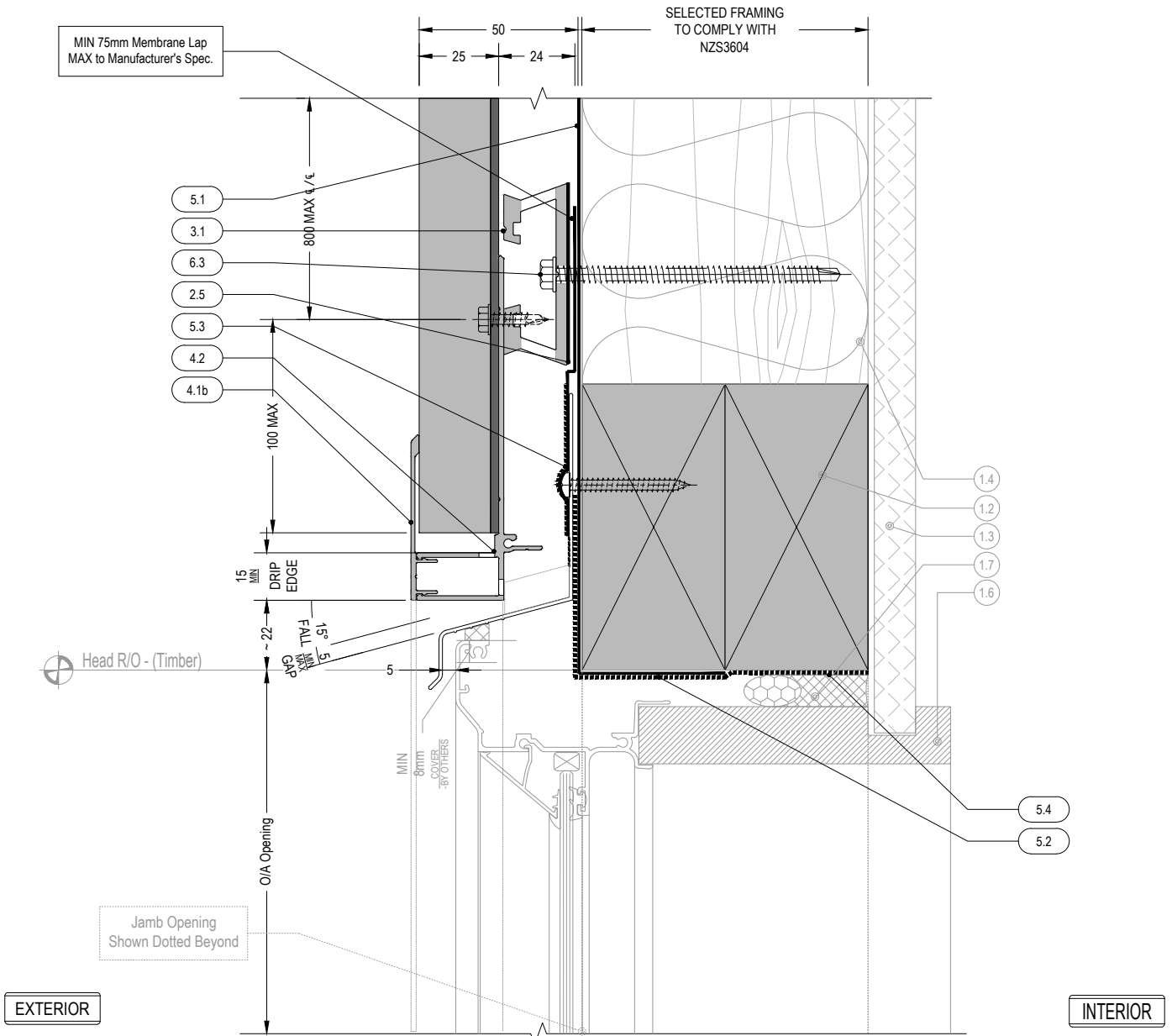
Detail Number

AC-V-04.2

Version

[v1] Dec. 2021

REFER TO 5.3 FOR WINDOW HEAD - JAMB JUNCTION



1. Structure : By Others

- 1.1 Concrete
- 1.2 Timber
- 1.3 Internal Lining
- 1.4 Insulation
- 1.5 Fibre Cement RWU
- 1.6 Window Joinery
- 1.7 Approved Sealant on PEF Rod to suit gap

2.0 AIClad Elements :

- 2.1 AIClad Vertical Shiplap Weatherboard Cladding
- 2.2a AC-Starter - Std. MILL
- 2.4 AC-Clamp Channel - Std. MILL
- 2.5 Butyl Pad
- 3.0 Cladding Support Elements :
- 3.1 AlphaRail20 - 20mm Aluminium Cavity Battens
- 3.1a AlphaClip - All 1.6mm Packer
- 3.1b AlphaClip3 - All 3mm Packer
- 3.1c AlphaClip5 - All 5mm Packer
- 3.1d AlphaClip10 - All 10mm Packer
- 4.0 BA-2PC Flashing & Junction Elements :
- 4.1a J-Mould Base - PC on Request
- 4.1b J-Mould Face - Std. Range PC
- 4.2 Drained BOC Base - PC on Request
- 4.3a Internal Corner Base - Std. MILL

4.3b Internal Corner Face - Std. Range PC

- 4.4a External Corner Base - Std. MILL
- 4.4b External Corner Face - Std. Range PC
- 4.5a Vertical Joints Base - Std. MILL
- 4.5b Vertical Joints Face - Std. Range PC
- 4.6 Jamb Clip - Std. MILL
- 4.7 Sill Clip Face - Flush Window - Std. Range PC
- 4.8 BigZed - Std. MILL
- 4.9 Sill Clip Face - Punch Window - Std. Range PC
- 4.10 Vermin Flashing - PC on Request
- 4.11a Type 1 Jamb Tray Right - With WANZ
- 4.11b Type 1 Jamb Tray Left - With WANZ
- 4.12a Type 2 Jamb Tray Left - Without WANZ
- 4.12b Type 2 Jamb Tray Left - Without WANZ

5.0 Suggested Membrane & Tapes :

- 5.1 Flexible Vapour Open - WRB
- 5.2 Sill Tape -150mm
- 5.3 Fabric Flashing Tape - 60mm
- 5.4 Wet Seal Adhesion Tape
- 6.0 Fixings
- 6.1 SS304 10gx20mm Hex-TekSD Screw 10mm Hex
- 6.2 SS304 8gx35mm PH SD Screw #2 Sq.Dr
- 6.3 SS304 12gx90mm Hextek Screw 10mm Hex
- 6.4 SS304 M6 x 75mm HARDTEC Screwbolt 9mm Hex Dr.
- 6.5 SS304 6g x 16mm CSK SD ST Screw
- 6.6 SS304 6g x 16mm PAN SD ST Screw

7.0 Aluminium Flashings

- 7.1 Jamb Flashing - Std. Range PC
- 7.2 AL 1.6mm Custom Folded
- 7.3 AL 1.8mm Custom Folded

Head - WANZ Bar

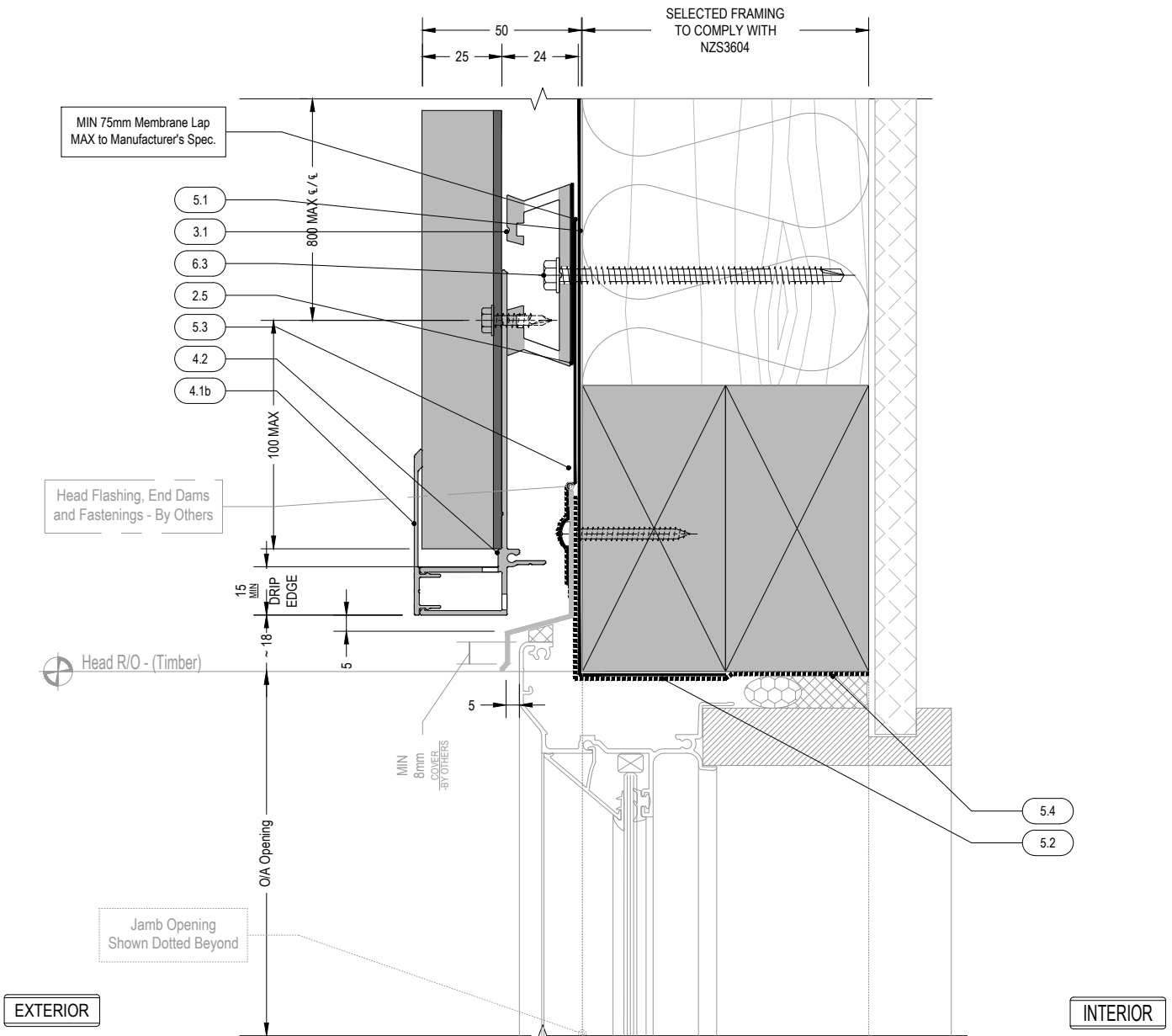
Detail Number

AC-V-05.1

Version

[v1] Dec. 2021

REFER TO 5.4 FOR WINDOW HEAD - JAMB JUNCTION



1. Structure : By Others

- 1.1 Concrete
- 1.2 Timber
- 1.3 Internal Lining
- 1.4 Insulation
- 1.5 Fibre Cement RWU
- 1.6 Window Joinery
- 1.7 Approved Sealant on PEF Rod to suit gap

2.0 AiClad Elements :

- 2.1 AiClad Vertical Shiplap Weatherboard Cladding
- 2.2a AC-Starter - Std. MILL
- 2.4 AC-Clamp Channel - Std. MILL
- 2.5 Butyl Pad
- 3.0 Cladding Support Elements :
- 3.1 AlphaRail20 - 20mm Aluminium Cavity Battens
- 3.1a AlphaClip - All 1.6mm Packer
- 3.1b AlphaClip3 - All 3mm Packer
- 3.1c AlphaClip5 - All 5mm Packer
- 3.1d AlphaClip10 - All 10mm Packer

4.0 BA-2Pc Flashing & Junction Elements :

- 4.1a J-Mould Base - PC on Request
- 4.1b J-Mould Face - Std. Range PC
- 4.2 Drained BOC Base - PC on Request
- 4.3a Internal Corner Base - Std. MILL

- 4.3b Internal Corner Face - Std. Range PC
- 4.4a External Corner Base - Std. MILL
- 4.4b External Corner Face - Std. Range PC
- 4.5a Vertical Joints Base - Std. MILL
- 4.5b Vertical Joints Face - Std. Range PC
- 4.6 Jamb Clip - Std. MILL
- 4.7 Sill Clip Face - Flush Window - Std. Range PC
- 4.8 BigZed - Std. MILL
- 4.9 Sill Clip Face - Punch Window - Std. Range PC
- 4.10 Vermin Flashing - PC on Request

- 4.11a Type 1 Jamb Tray Right - With WANZ
- 4.11b Type 1 Jamb Tray Left - With WANZ
- 4.12a Type 2 Jamb Tray Left - Without WANZ
- 4.12b Type 2 Jamb Tray Left - Without WANZ

5.0 Suggested Membrane & Tapes :

- 5.1 Flexible Vapour Open - WRB
- 5.2 Sill Tape - 150mm
- 5.3 Fabric Flashing Tape - 60mm
- 5.4 Wet Seal Adhesion Tape
- 6.0 Fixings
- 6.1 SS304 10gx20mm Hex-TekSD Screw 10mm Hex
- 6.2 SS304 8gx35mm PH SD Screw #2 Sq.Dr
- 6.3 SS304 12gx90mm Hextek Screw 10mm Hex
- 6.4 SS304 M6 x 75mm HARDTEC Screwbolt 9mm Hex Dr.
- 6.5 SS304 6g x 16mm CSK SD ST Screw
- 6.6 SS304 6g x 16mm PAN SD ST Screw

7.0 Aluminium Flashings

- 7.1 Jamb Flashing - Std. Range PC
- 7.2 AL 1.6mm Custom Folded
- 7.3 AL 1.8mm Custom Folded

Head - No WANZ

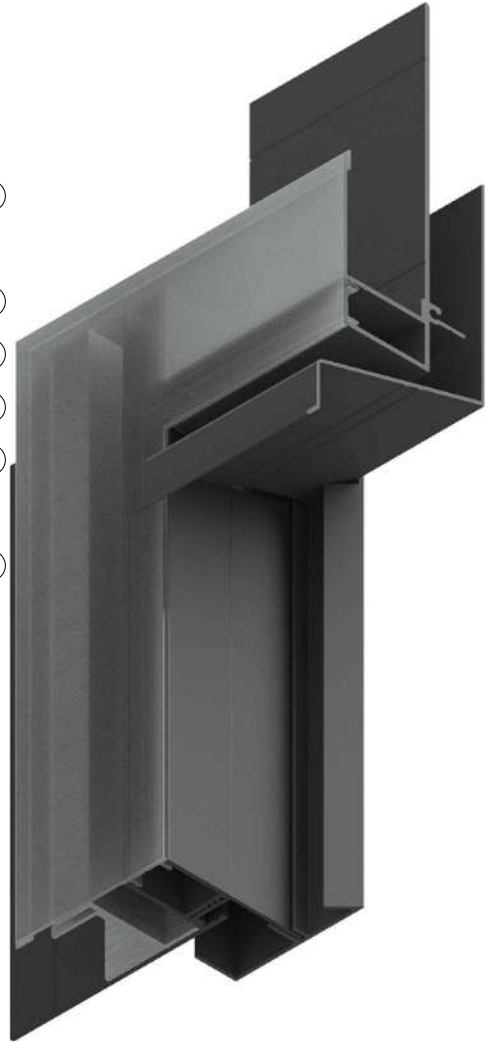
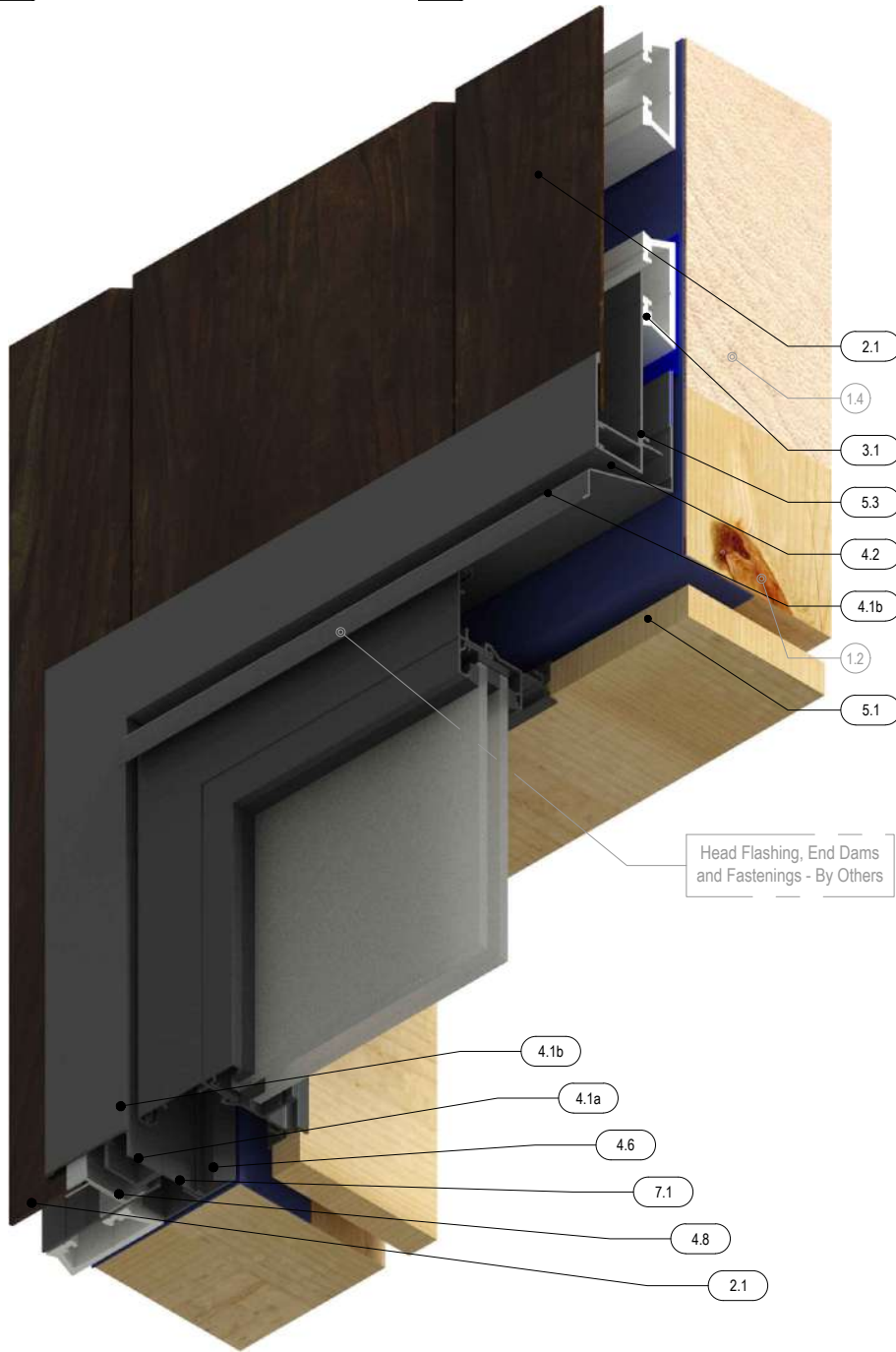
Detail Number

AC-V-05.2

Version

[v1] Dec. 2021

ALICLAD



Head Flashing, End Dams and Fastenings - By Others

1. Structure : By Others

- 1.1 Concrete
- 1.2 Timber
- 1.3 Internal Lining
- 1.4 Insulation
- 1.5 Fibre Cement RWU
- 1.6 Window Joinery
- 1.7 Approved Sealant on PEF Rod to suit gap

2.0 AiClad Elements :

- 2.1 AiClad Vertical Shiplap Weatherboard Cladding
- 2.2a AC-Starter - Std. MILL
- 2.4 AC-Clamp Channel - Std. MILL
- 2.5 Butyl Pad

3.0 Cladding Support Elements :

- 3.1 AlphaRail20 - 20mm Aluminium Cavity Battens
- 3.1a AlphaClip - All 1.6mm Packer
- 3.1b AlphaClip3 - All 3mm Packer
- 3.1c AlphaClip5 - All 5mm Packer
- 3.1d AlphaClip10 - All 10mm Packer

4.0 BA-2Pc Flashing & Junction Elements :

- 4.1a J-Mould Base - PC on Request
- 4.1b J-Mould Face - Std. Range PC
- 4.2 Drained BOC Base - PC on Request
- 4.3a Internal Corner Base - Std. MILL

- 4.3b Internal Corner Face - Std. Range PC
- 4.4a External Corner Base - Std. MILL
- 4.4b External Corner Face - Std. Range PC
- 4.5a Vertical Joiner Base - Std. MILL
- 4.5b Vertical Joiner Face - Std. Range PC
- 4.6 Jamb Clip - Std. MILL
- 4.7 Sill Clip Face - Flush Window - Std. Range PC
- 4.8 BigZed - Std. MILL
- 4.9 Sill Clip Face - Punch Window - Std. Range PC
- 4.10 Vermin Flashing - PC on Request

- 4.11a Type 1 Jamb Tray Right - With WANZ
- 4.11b Type 1 Jamb Tray Left - With WANZ
- 4.12a Type 2 Jamb Tray Left - Without WANZ
- 4.12b Type 2 Jamb Tray Right - Without WANZ

5.0 Suggested Membrane & Tapes :

- 5.1 Flexible Vapour Open - WRB
- 5.2 Sill Tape -150mm
- 5.3 Fabric Flashing Tape - 60mm
- 5.4 Wet Seal Adhesion Tape
- 6.0 Fixings
- 6.1 SS304 10gx20mm Hex-TekSD Screw 10mm Hex
- 6.2 SS304 8gx35mm PH SD Screw #2 Sq.Dr
- 6.3 SS304 12gx90mm Hextek Screw 10mm Hex
- 6.4 SS304 M6 x 75mm HARDTEC Screwbolt 9mm Hex Dr.
- 6.5 SS304 6g x 16mm CSK SD ST Screw
- 6.6 SS304 6g x 16mm PAN SD ST Screw

7.0 Aluminium Flashings

- 7.1 Jamb Flashing - Std. Range PC
- 7.2 AL 1.6mm Custom Folded
- 7.3 AL 1.8mm Custom Folded

3D - Head & WANZ

Detail Number

AC-V-05.3

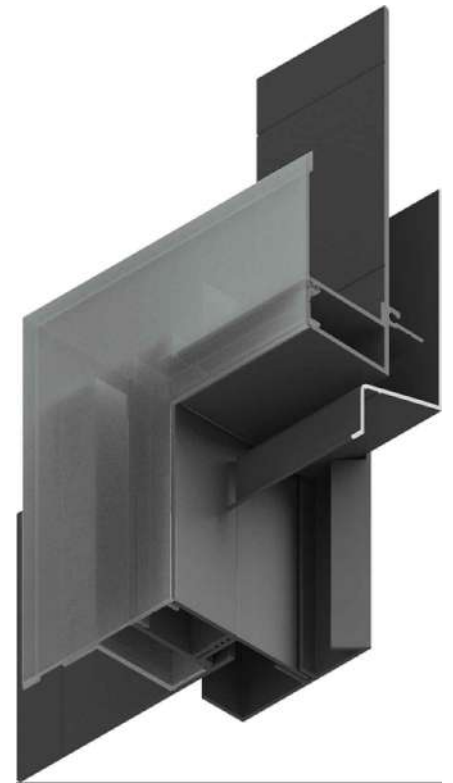
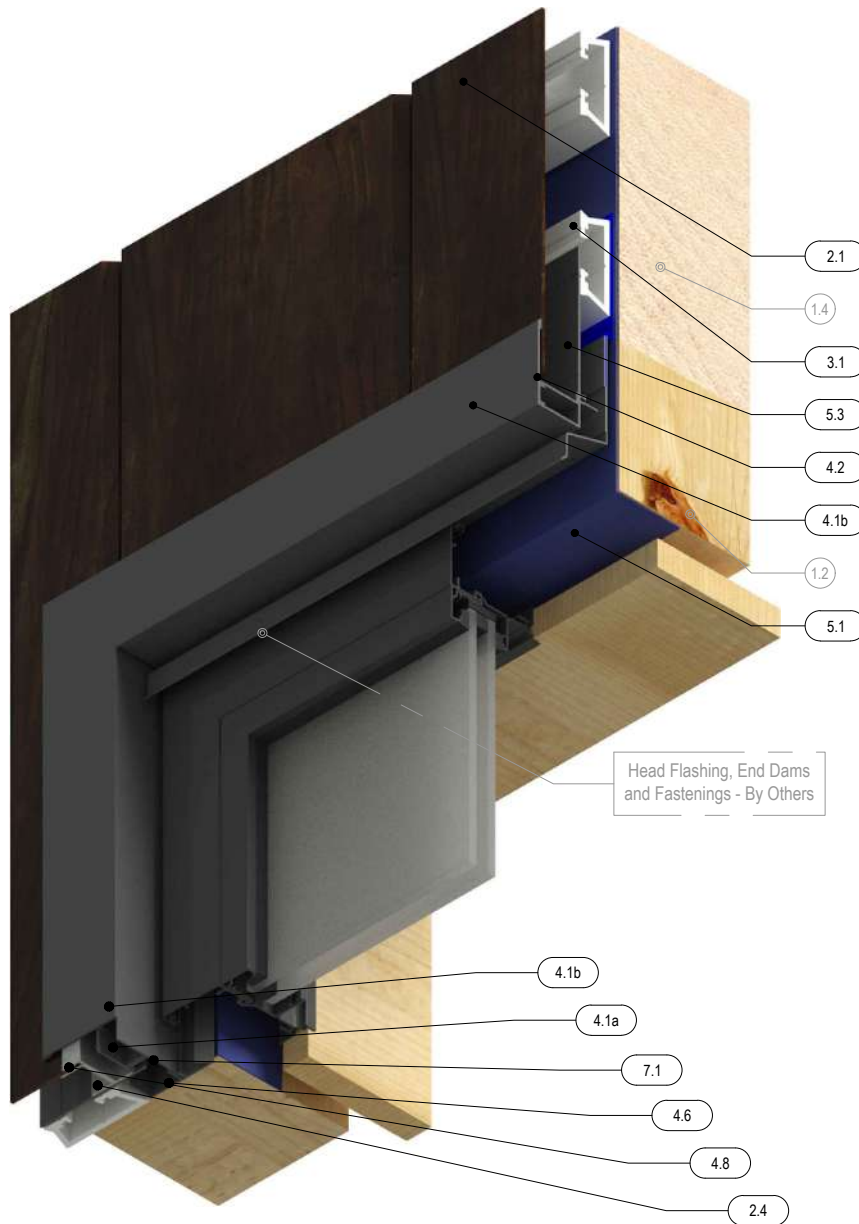
Version

[v1] Dec. 2021



MATERIALS • SYSTEMS • SOLUTIONS

ALICLAD



Head Flashing, End Dams and Fastenings - By Others

1. Structure : By Others

- 1.1 Concrete
- 1.2 Timber
- 1.3 Internal Lining
- 1.4 Insulation
- 1.5 Fibre Cement RWU
- 1.6 Window Joinery
- 1.7 Approved Sealant on PEF Rod to suit gap

2.0 AiClad Elements :

- 2.1 AiClad Vertical Shiplap Weatherboard Cladding
- 2.2a AC-Starter - Std. MILL
- 2.4 AC-Clamp Channel - Std. MILL
- 2.5 Butyl Pad

3.0 Cladding Support Elements :

- 3.1 AlphaRail20 - 20mm Aluminium Cavity Battens
- 3.1a AlphaClip - All 1.6mm Packer
- 3.1b AlphaClip3 - All 3mm Packer
- 3.1c AlphaClip5 - All 5mm Packer
- 3.1d AlphaClip10 - All 10mm Packer

4.0 BA-2Pc Flashing & Junction Elements :

- 4.1a J-Mould Base - PC on Request
- 4.1b J-Mould Face - Std. Range PC
- 4.2 Drained BOC Base - PC on Request
- 4.3a Internal Corner Base - Std. MILL

- 4.3b Internal Corner Face - Std. Range PC
- 4.4a External Corner Base - Std. MILL
- 4.4b External Corner Face - Std. Range PC
- 4.5a Vertical Joiner Base - Std. MILL
- 4.5b Vertical Joiner Face - Std. Range PC
- 4.6 Jamb Clip - Std. MILL
- 4.7 Sill Clip Face - Flush Window - Std. Range PC
- 4.8 BigZed - Std. MILL
- 4.9 Sill Clip Face - Punch Window - Std. Range PC
- 4.10 Vermin Flashing - PC on Request

- 4.11a Type 1 Jamb Tray Right - With WANZ
- 4.11b Type 1 Jamb Tray Left - With WANZ
- 4.12a Type 2 Jamb Tray Left - Without WANZ
- 4.12b Type 2 Jamb Tray Right - Without WANZ

5.0 Suggested Membrane & Tapes :

- 5.1 Flexible Vapour Open - WRB
- 5.2 Sill Tape -150mm
- 5.3 Fabric Flashing Tape - 60mm
- 5.4 Wet Seal Adhesion Tape
- 6.0 Fixings
- 6.1 SS304 10gx20mm Hex-TekSD Screw 10mm Hex
- 6.2 SS304 8gx35mm PH SD Screw #2 Sq.Dr
- 6.3 SS304 12gx90mm Hextek Screw 10mm Hex
- 6.4 SS304 M6 x 75mm HARDTEC Screwbolt 9mm Hex Dr.
- 6.5 SS304 6g x 16mm CSK SD ST Screw
- 6.6 SS304 6g x 16mm PAN SD ST Screw

7.0 Aluminium Flashings

- 7.1 Jamb Flashing - Std. Range PC
- 7.2 AL 1.6mm Custom Folded
- 7.3 AL 1.8mm Custom Folded

3D - Head No WANZ

Detail Number

AC-V-05.4

Version

[v1] Dec. 2021

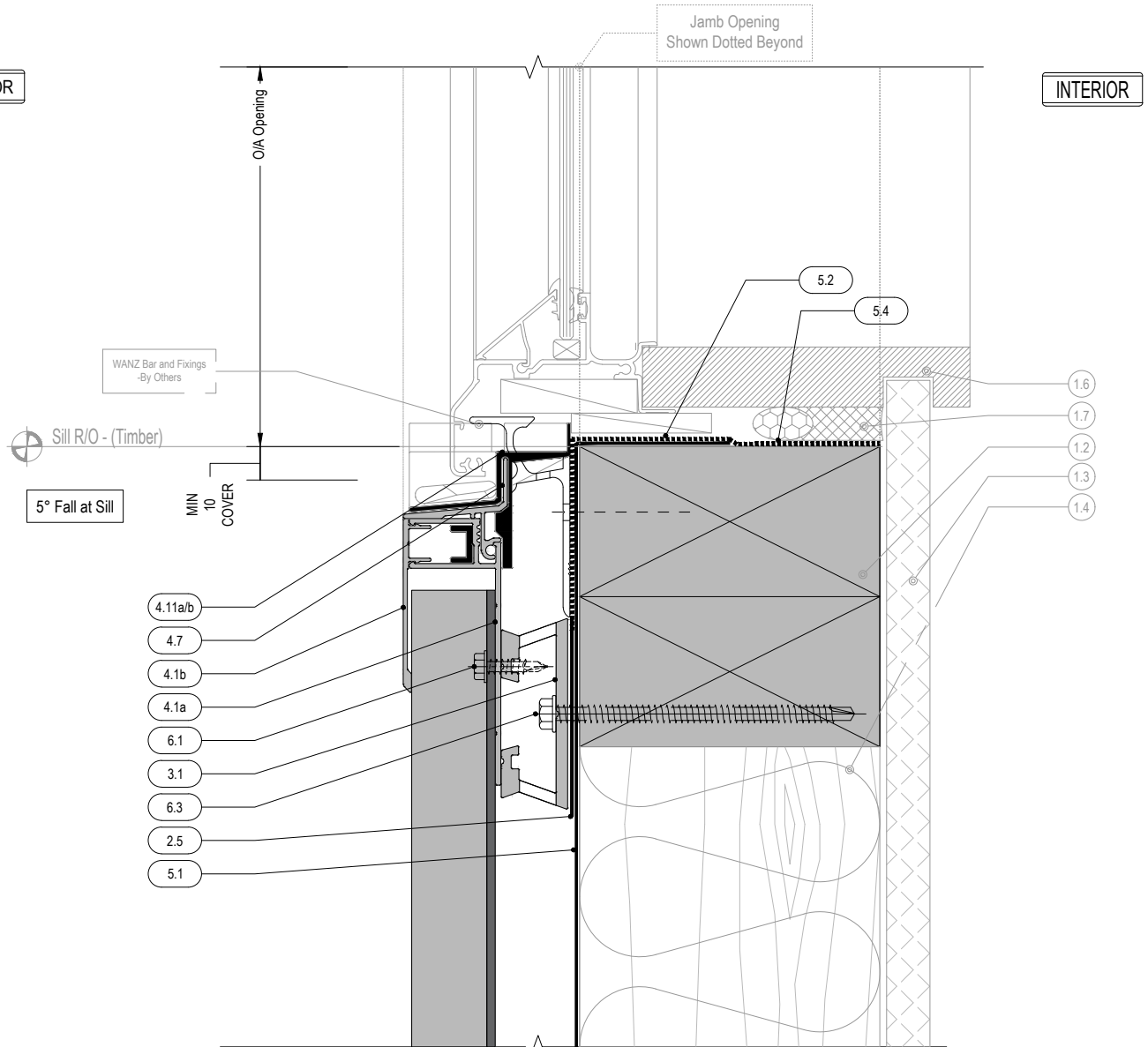


MATERIALS • SYSTEMS • SOLUTIONS

REFER TO 6.3 FOR WINDOW SILL - JAMB JUNCTION

EXTERIOR

INTERIOR



SELECTED FRAMING
TO COMPLY WITH
NZS3604

1. Structure : By Others

- 1.1 Concrete
- 1.2 Timber
- 1.3 Internal Lining
- 1.4 Insulation
- 1.5 Fibre Cement RWU
- 1.6 Window Joinery
- 1.7 Approved Sealant on PEF Rod to suit gap

2.0 AiClad Elements :

- 2.1 AiClad Vertical Shiplap Weatherboard Cladding
- 2.2a AC-Starter - Std. MILL
- 2.4 AC-Clamp Channel - Std. MILL
- 2.5 Butyl Pad
- 3.0 Cladding Support Elements :
- 3.1 AlphaRail20 - 20mm Aluminium Cavity Battens
- 3.1a AlphaClip - All 1.6mm Packer
- 3.1b AlphaClip3 - All 3mm Packer
- 3.1c AlphaClip5 - All 5mm Packer
- 3.1d AlphaClip10 - All 10mm Packer

4.0 BA-2Pc Flashing & Junction Elements :

- 4.1a J-Mould Base - PC on Request
- 4.1b J-Mould Face - Std. Range PC
- 4.2 Drained BOC Base - PC on Request
- 4.3a Internal Corner Base - Std. MILL

- 4.3b Internal Corner Face - Std. Range PC
- 4.4a External Corner Base - Std. MILL
- 4.4b External Corner Face - Std. Range PC
- 4.5a Vertical Joiner Base - Std. MILL
- 4.5b Vertical Joiner Face - Std. Range PC
- 4.6 Jamb Clip - Std. MILL
- 4.7 Sill Clip Face - Flush Window - Std. Range PC
- 4.8 BigZed - Std. MILL
- 4.9 Sill Clip Face - Punch Window - Std. Range PC
- 4.10 Vermin Flashing - PC on Request

- 4.11a Type 1 Jamb Tray Right - With WANZ
- 4.11b Type 1 Jamb Tray Left - With WANZ
- 4.12a Type 2 Jamb Tray Left - Without WANZ
- 4.12b Type 2 Jamb Tray Left - Without WANZ

5.0 Suggested Membrane & Tapes :

- 5.1 Flexible Vapour Open - WRB
- 5.2 Sill Tape - 150mm
- 5.3 Fabric Flashing Tape - 60mm
- 5.4 Wet Seal Adhesion Tape
- 6.0 Fixings
- 6.1 SS304 10gx20mm Hex-TekSD Screw 10mm Hex
- 6.2 SS304 8gx35mm PH SD Screw #2 Sq.Dr
- 6.3 SS304 12gx90mm Hextek Screw 10mm Hex
- 6.4 SS304 M6 x 75mm HARDTEC Screwbolt 9mm Hex Dr.
- 6.5 SS304 6g x 16mm CSK SD ST Screw
- 6.6 SS304 6g x 16mm PAN SD ST Screw

7.0 Aluminium Flashings

- 7.1 Jamb Flashing - Std. Range PC
- 7.2 AL 1.6mm Custom Folded
- 7.3 AL 1.8mm Custom Folded

Sill - WANZ Bar

Detail Number

AC-V-06.1

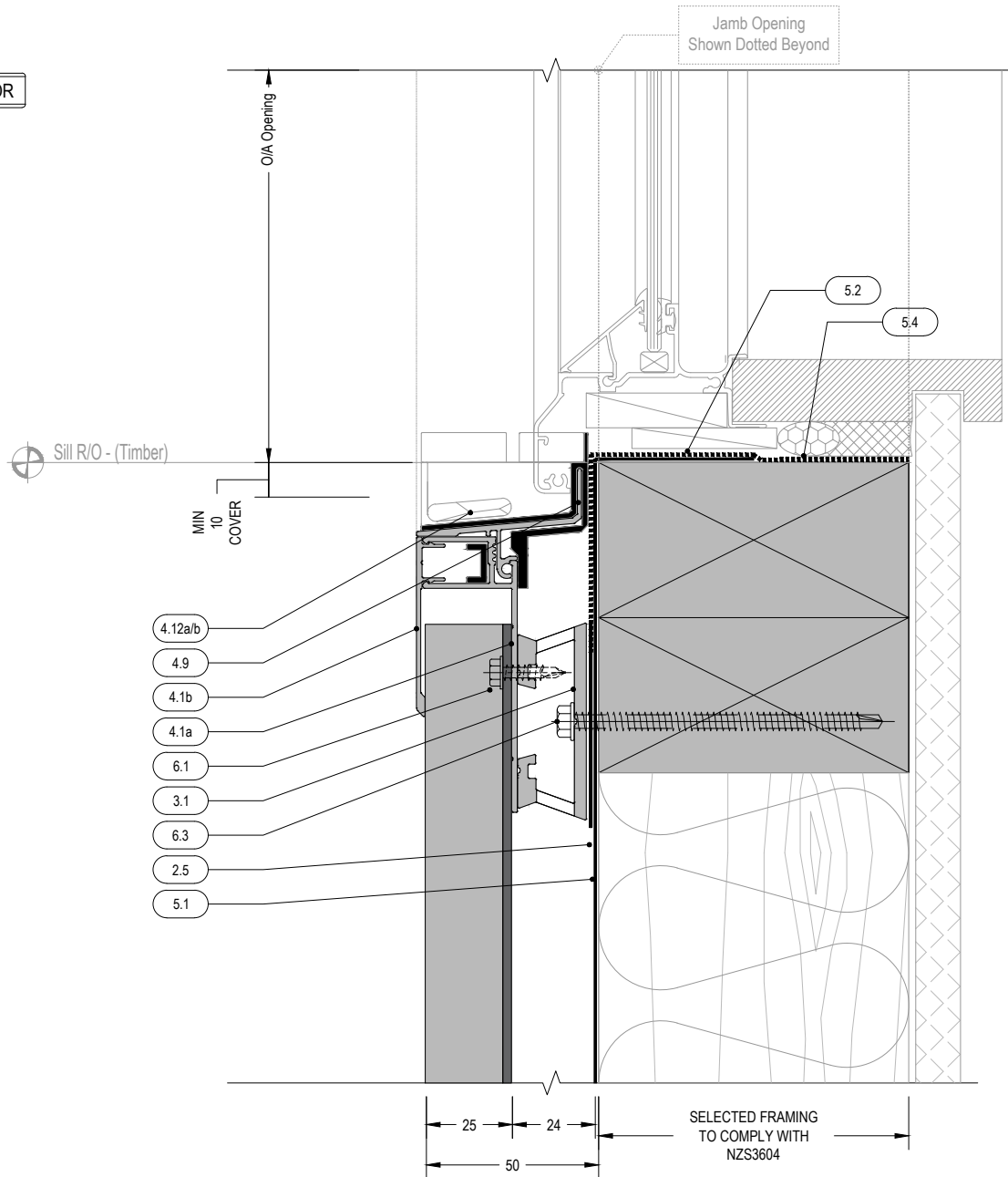
Version

[v1] Dec. 2021

REFER TO 06.4 FOR WINDOW SILL - JAMB JUNCTION

EXTERIOR

INTERIOR



1. Structure : By Others

- 1.1 Concrete
- 1.2 Timber
- 1.3 Internal Lining
- 1.4 Insulation
- 1.5 Fibre Cement RWU
- 1.6 Window Joinery
- 1.7 Approved Sealant on PEF Rod to suit gap

2.0 AlClad Elements :

- 2.1 AlClad Vertical Shiplap Weatherboard Cladding
- 2.2a AC-Starter - Std. MILL
- 2.4 AC-Clamp Channel - Std. MILL
- 2.5 Butyl Pad
- 3.0 Cladding Support Elements :
- 3.1 AlphaRail20 - 20mm Aluminium Cavity Battens
- 3.1a AlphaClip - All 1.6mm Packer
- 3.1b AlphaClip3 - All 3mm Packer
- 3.1c AlphaClip5 - All 5mm Packer
- 3.1d AlphaClip10 - All 10mm Packer

4.0 BA-2Pc Flashing & Junction Elements :

- 4.1a J-Mould Base - PC on Request
- 4.1b J-Mould Face - Std. Range PC
- 4.2 Drained BOC Base - PC on Request
- 4.3a Internal Corner Base - Std. MILL

- 4.3b Internal Corner Face - Std. Range PC
- 4.4a External Corner Base - Std. MILL
- 4.4b External Corner Face - Std. Range PC
- 4.5a Vertical Joiner Base - Std. MILL
- 4.5b Vertical Joiner Face - Std. Range PC
- 4.6 Jamb Clip - Std. MILL
- 4.7 Sill Clip Face - Flush Window - Std. Range PC
- 4.8 BigZed - Std. MILL
- 4.9 Sill Clip Face - Punch Window - Std. Range PC
- 4.10 Vermin Flashing - PC on Request

- 4.11a Type 1 Jamb Tray Right - With WANZ
- 4.11b Type 1 Jamb Tray Left - With WANZ
- 4.12a Type 2 Jamb Tray Left - Without WANZ
- 4.12b Type 2 Jamb Tray Left - Without WANZ

5.0 Suggested Membrane & Tapes :

- 5.1 Flexible Vapour Open - WRB
- 5.2 Sill Tape -150mm
- 5.3 Fabric Flashing Tape - 60mm
- 5.4 Wet Seal Adhesion Tape
- 6.0 Fixings
- 6.1 SS304 10gx20mm Hex-TekSD Screw 10mm Hex
- 6.2 SS304 8gx35mm PH SD Screw #2 Sq.Dr
- 6.3 SS304 12gx90mm Hextek Screw 10mm Hex
- 6.4 SS304 M6 x 75mm HARDTEC Screwbolt 9mm Hex Dr.
- 6.5 SS304 6g x 16mm CSK SD ST Screw
- 6.6 SS304 6g x 16mm PAN SD ST Screw

7.0 Aluminium Flashings

- 7.1 Jamb Flashing - Std. Range PC
- 7.2 AL 1.6mm Custom Folded
- 7.3 AL 1.8mm Custom Folded

Sill - No WANZ

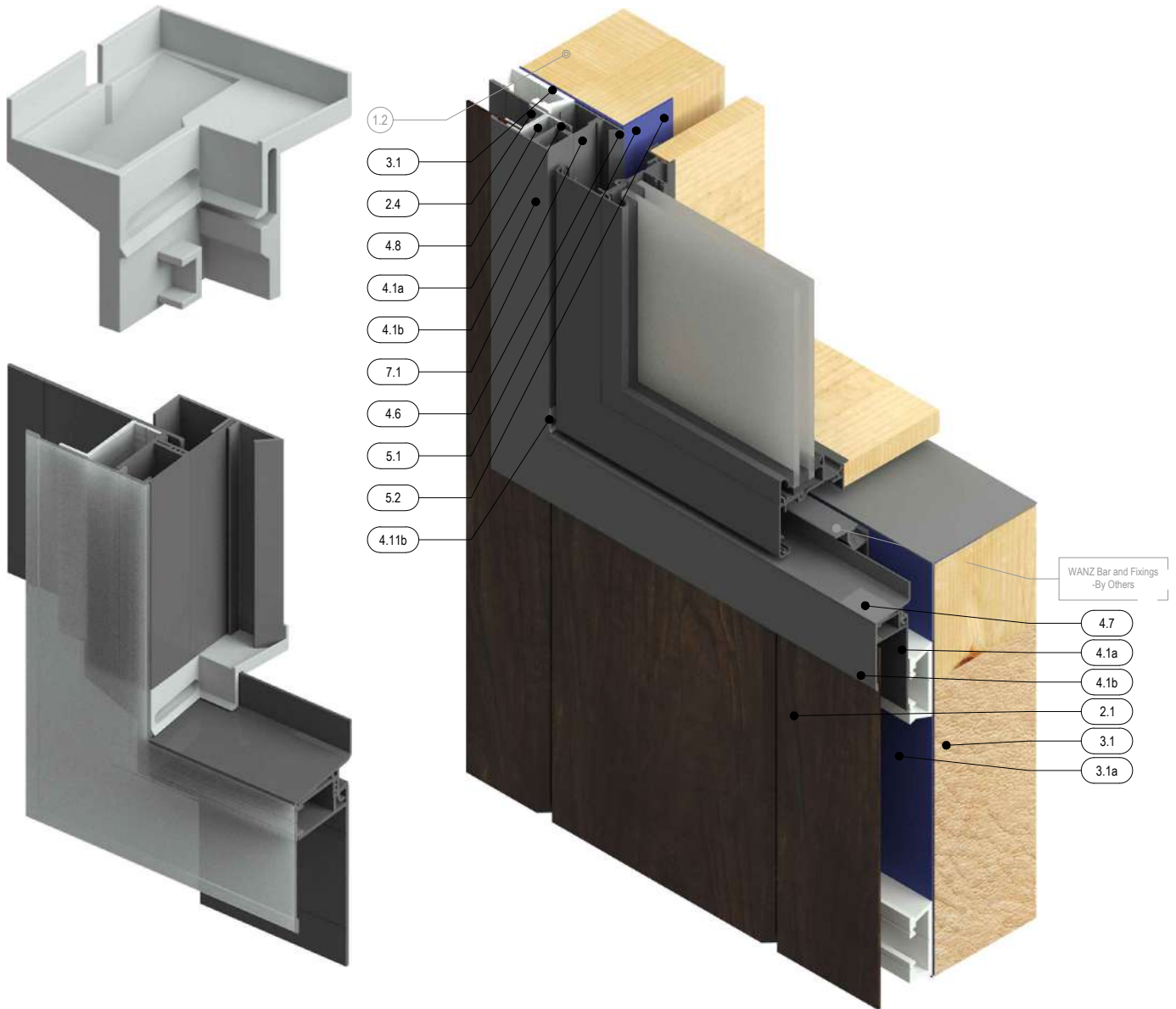
Detail Number

AC-V-06.2

Version

[v1] Dec. 2021

ALICLAD



1. Structure : By Others

- 1.1 Concrete
- 1.2 Timber
- 1.3 Internal Lining
- 1.4 Insulation
- 1.5 Fibre Cement RWU
- 1.6 Window Joinery
- 1.7 Approved Sealant on PEF Rod to suit gap

2.0 AIClAD Elements :

- 2.1 AIClAD Vertical Shiplap Weatherboard Cladding
- 2.2a AC-Starter - Std. MILL
- 2.4 AC-Clamp Channel - Std. MILL
- 2.5 Butyl Pad

3.0 Cladding Support Elements :

- 3.1 AlphaRail20 - 20mm Aluminium Cavity Battens
- 3.1a AlphaClip - All 1.6mm Packer
- 3.1b AlphaClip3 - All 3mm Packer
- 3.1c AlphaClip5 - All 5mm Packer
- 3.1d AlphaClip10 - All 10mm Packer

4.0 BA-2Pc Flashing & Junction Elements :

- 4.1a J-Mould Base - PC on Request
- 4.1b J-Mould Face - Std. Range PC
- 4.2 Drained BOC Base - PC on Request
- 4.3a Internal Corner Base - Std. MILL

- 4.3b Internal Corner Face - Std. Range PC
- 4.4a External Corner Base - Std. MILL
- 4.4b External Corner Face - Std. Range PC
- 4.5a Vertical Joiner Base - Std. MILL
- 4.5b Vertical Joiner Face - Std. Range PC
- 4.6 Jamb Clip - Std. MILL
- 4.7 Sill Clip Face - Flush Window - Std. Range PC
- 4.8 BigZed - Std. MILL
- 4.9 Sill Clip Face - Punch Window - Std. Range PC
- 4.10 Vermin Flashing - PC on Request

- 4.11a Type 1 Jamb Tray Right - With Wanz
- 4.11b Type 1 Jamb Tray Left - With Wanz
- 4.12a Type 2 Jamb Tray Left - Without Wanz
- 4.12b Type 2 Jamb Tray Left - Without Wanz

5.0 Suggested Membrane & Tapes :

- 5.1 Flexible Vapour Open - WRB
- 5.2 Sill Tape -150mm
- 5.3 Fabric Flashing Tape - 60mm
- 5.4 Wet Seal Adhesion Tape

7.0 Aluminium Flashings

- 7.1 Jamb Flashing - Std. Range PC
- 7.2 AL 1.6mm Custom Folded
- 7.3 AL 1.8mm Custom Folded

3D - Sill & Wanz

Detail Number

AC-V-06.3

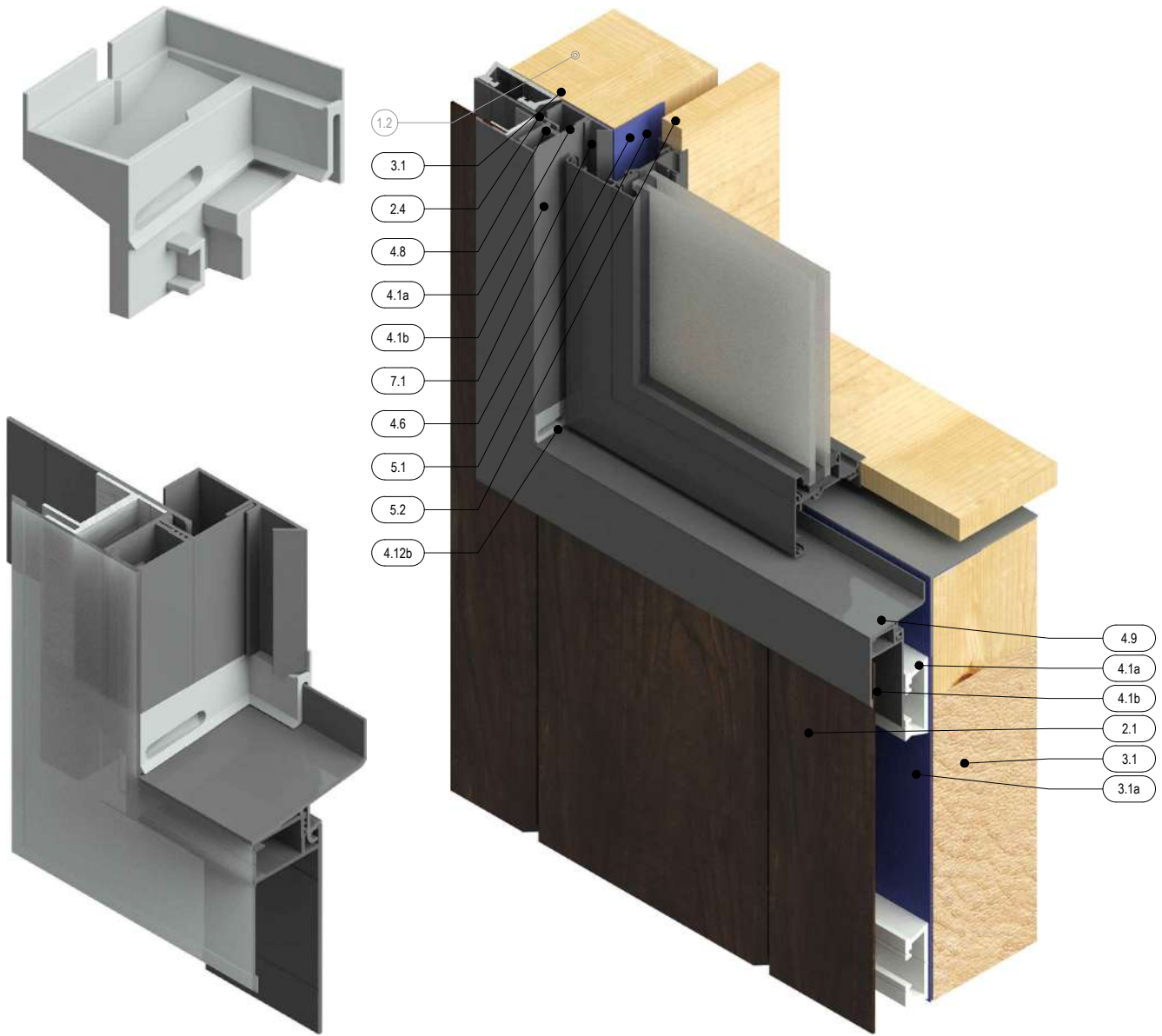
Version

[v1] Dec. 2021



MATERIALS • SYSTEMS • SOLUTIONS

ALICLAD



1. Structure : By Others

- 1.1 Concrete
- 1.2 Timber
- 1.3 Internal Lining
- 1.4 Insulation
- 1.5 Fibre Cement RWU
- 1.6 Window Joinery
- 1.7 Approved Sealant on PEF Rod to suit gap

2.0 ALIClad Elements :

- 2.1 ALIClad Vertical Shiplap Weatherboard Cladding
- 2.2a AC-Starter - Std. MILL
- 2.4 AC-Clamp Channel - Std. MILL
- 2.5 Butyl Pad

3.0 Cladding Support Elements :

- 3.1 AlphaRail20 - 20mm Aluminium Cavity Battens
- 3.1a AlphaClip - All 1.6mm Packer
- 3.1b AlphaClip3 - All 3mm Packer
- 3.1c AlphaClip5 - All 5mm Packer
- 3.1d AlphaClip10 - All 10mm Packer

4.0 BA-2Pc Flashing & Junction Elements :

- 4.1a J-Mould Base - PC on Request
- 4.1b J-Mould Face - Std. Range PC
- 4.2 Drained BOC Base - PC on Request
- 4.3a Internal Corner Base - Std. MILL

4.3b Internal Corner Face - Std. Range PC

- 4.4a External Corner Base - Std. MILL
- 4.4b External Corner Face - Std. Range PC
- 4.5a Vertical Joiner Base - Std. MILL
- 4.5b Vertical Joiner Face - Std. Range PC
- 4.6 Jamb Clip - Std. MILL
- 4.7 Sill Clip Face - Flush Window - Std. Range PC
- 4.8 BigZed - Std. MILL
- 4.9 Sill Clip Face - Punch Window - Std. Range PC
- 4.10 Vermin Flashing - PC on Request

4.11a Type 1 Jamb Tray Right - With WANZ

- 4.11b Type 1 Jamb Tray Left - With WANZ
- 4.12a Type 2 Jamb Tray Left - Without WANZ
- 4.12b Type 2 Jamb Tray Left - Without WANZ

5.0 Suggested Membrane & Tapes :

- 5.1 Flexible Vapour Open - WRB
- 5.2 Sill Tape -150mm
- 5.3 Fabric Flashing Tape - 60mm
- 5.4 Wet Seal Adhesion Tape

7.0 Aluminium Flashings

- 7.1 Jamb Flashing - Std. Range PC
- 7.2 AL 1.6mm Custom Folded
- 7.3 AL 1.8mm Custom Folded

3D - Sill No WANZ

Detail Number

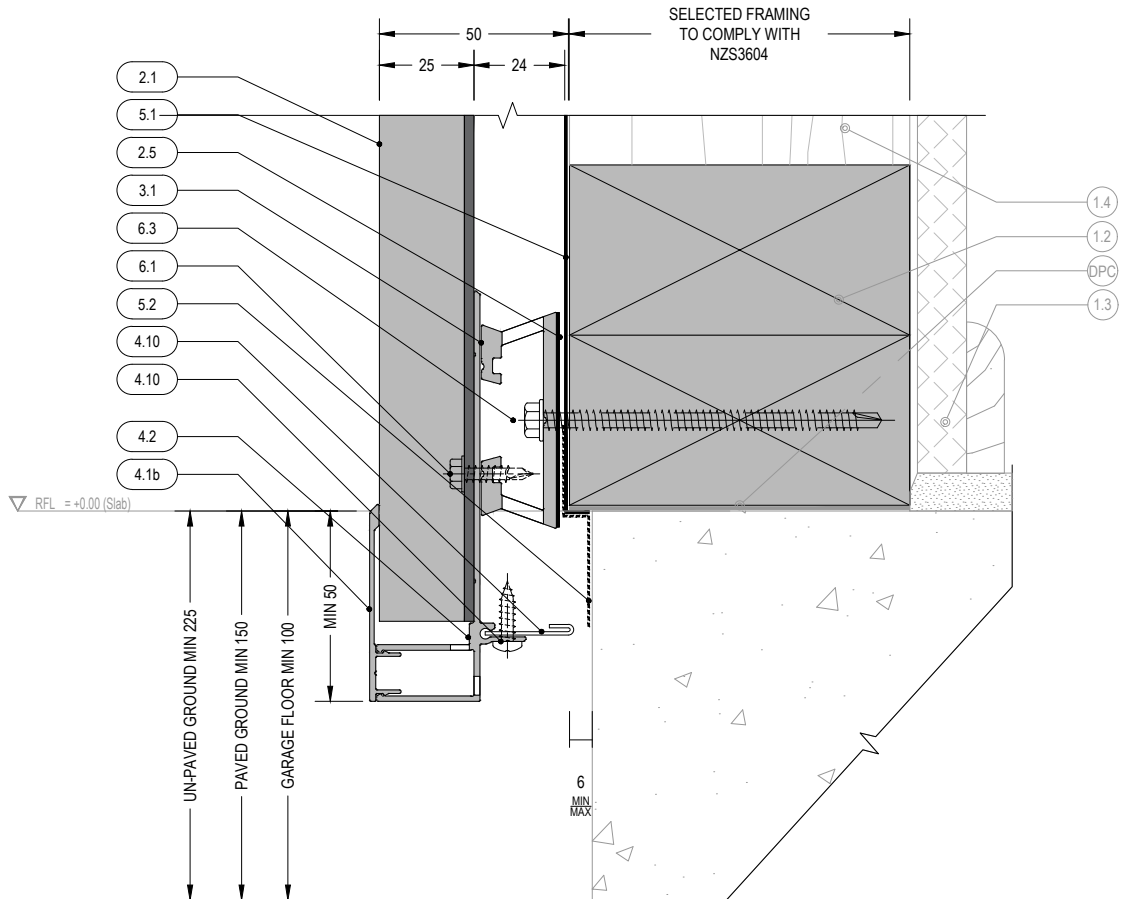
AC-V-06.4

Version

[v1] Dec. 2021



MATERIALS • SYSTEMS • SOLUTIONS



1. Structure : By Others

- 1.1 Concrete
- 1.2 Timber
- 1.3 Internal Lining
- 1.4 Insulation
- 1.5 Fibre Cement RWU
- 1.6 Window Joinery
- 1.7 Approved Sealant on PEF Rod to suit gap

2.0 AiClad Elements :

- 2.1 AiClad Vertical Shiplap Weatherboard Cladding
- 2.2a AC-Starter - Std. MILL
- 2.4 AC-Clamp Channel - Std. MILL
- 2.5 Butyl Pad
- 3.0 Cladding Support Elements :
- 3.1 AlphaRail20 - 20mm Aluminium Cavity Battens
- 3.1a AlphaClip - All 1.6mm Packer
- 3.1b AlphaClip3 - All 3mm Packer
- 3.1c AlphaClip5 - All 5mm Packer
- 3.1d AlphaClip10 - All 10mm Packer

4.0 BA-2Pc Flashing & Junction Elements :

- 4.1a J-Mould Base - PC on Request
- 4.1b J-Mould Face - Std. Range PC
- 4.2 Drained BOC Base - PC on Request
- 4.3a Internal Corner Base - Std. MILL

- 4.3b Internal Corner Face - Std. Range PC
- 4.4a External Corner Base - Std. MILL
- 4.4b External Corner Face - Std. Range PC
- 4.5a Vertical Joiner Base - Std. MILL
- 4.5b Vertical Joiner Face - Std. Range PC
- 4.6 Jamb Clip - Std. MILL
- 4.7 Sill Clip Face - Flush Window - Std. Range PC
- 4.8 BigZed - Std. MILL
- 4.9 Sill Clip Face - Punch Window - Std. Range PC
- 4.10 Vermin Flashing - PC on Request
- 4.11a Type 1 Jamb Tray Right - With WANZ
- 4.11b Type 1 Jamb Tray Left - With WANZ
- 4.12a Type 2 Jamb Tray Left - Without WANZ
- 4.12b Type 2 Jamb Tray Left - Without WANZ

5.0 Suggested Membrane & Tapes :

- 5.1 Flexible Vapour Open - WRB
- 5.2 Sill Tape -150mm
- 5.3 Fabric Flashing Tape - 60mm
- 5.4 Wet Seal Adhesion Tape
- 6.0 Fixings
- 6.1 SS304 10gx20mm Hex-TekSD Screw 10mm Hex
- 6.2 SS304 8gx35mm PH SD Screw #2 Sq.Dr
- 6.3 SS304 12gx90mm Hextek Screw 10mm Hex
- 6.4 SS304 M6 x 75mm HARDTEC Screwbolt 9mm Hex Dr.
- 6.5 SS304 6g x 16mm CSK SD ST Screw
- 6.6 SS304 6g x 16mm PAN SD ST Screw

7.0 Aluminium Flashings

- 7.1 Jamb Flashing Std. Range PC
- 7.2 AL 1.6mm Custom Folded
- 7.3 AL 1.8mm Custom Folded

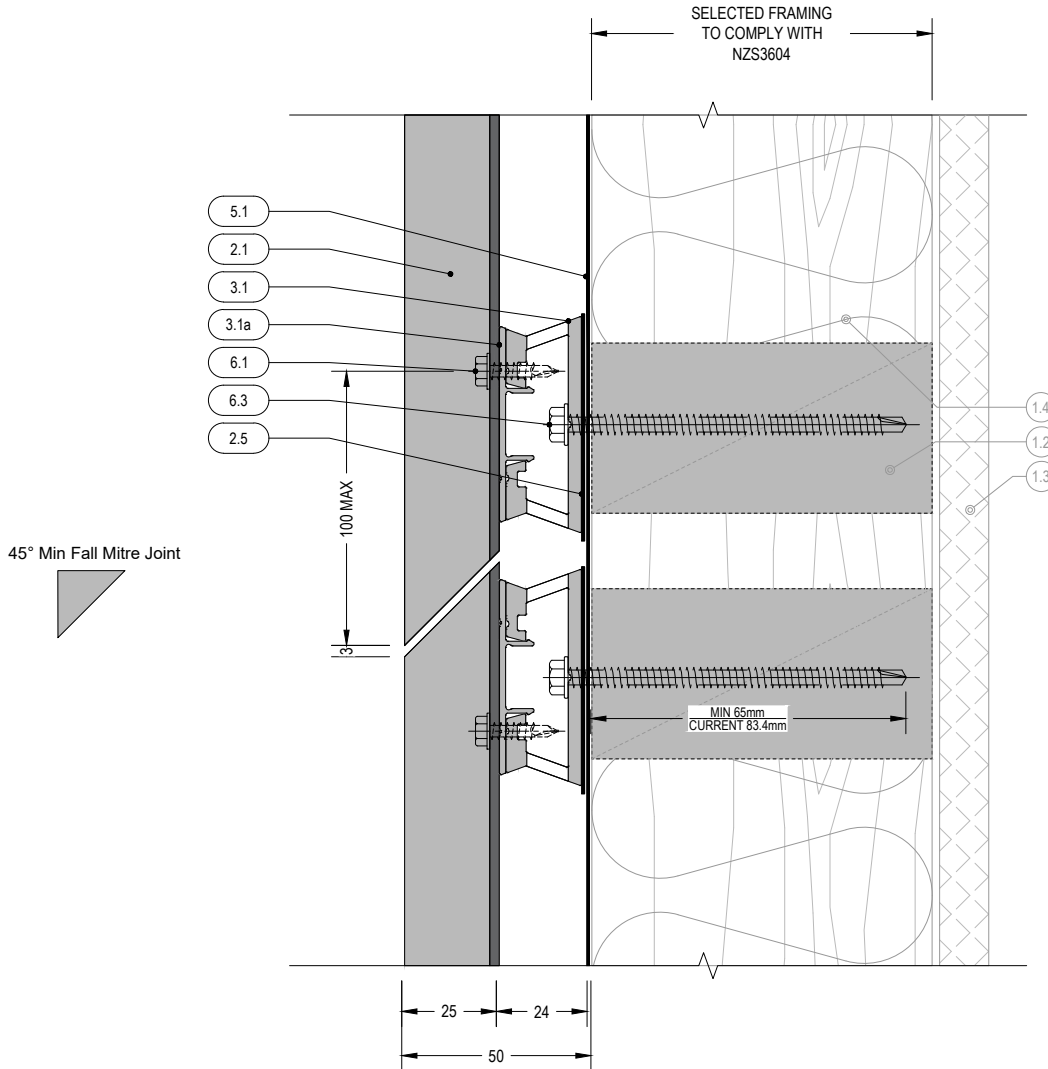
Foundation Bottom of Cladding

Detail Number

AC-V-07

Version

[v1] Dec. 2021



1. Structure : By Others

- 1.1 Concrete
- 1.2 Timber
- 1.3 Internal Lining
- 1.4 Insulation
- 1.5 Fibre Cement RWU
- 1.6 Window Joinery
- 1.7 Approved Sealant on PEF Rod to suit gap

2.0 AlClad Elements :

- 2.1 AlClad Vertical Shiplap Weatherboard Cladding
- 2.2a AC-Starter - Std. MILL
- 2.4 AC-Clamp Channel - Std. MILL
- 2.5 Butyl Pad
- 3.0 Cladding Support Elements :
- 3.1 AlphaRail20 - 20mm Aluminium Cavity Battens
- 3.1a AlphaClip - All 1.6mm Packer
- 3.1b AlphaClip3 - All 3mm Packer
- 3.1c AlphaClip5 - All 5mm Packer
- 3.1d AlphaClip10 - All 10mm Packer

4.0 BA-2Pc Flashing & Junction Elements :

- 4.1a J-Mould Base - PC on Request
- 4.1b J-Mould Face - Std. Range PC
- 4.2 Drained BOC Base - PC on Request
- 4.3a Internal Corner Base - Std. MILL

- 4.3b Internal Corner Face - Std. Range PC
- 4.4a External Corner Base - Std. MILL
- 4.4b External Corner Face - Std. Range PC
- 4.5a Vertical Joints Base - Std. MILL
- 4.5b Vertical Joints Face - Std. Range PC
- 4.6 Jamb Clip - Std. MILL
- 4.7 Sill Clip Face - Flush Window - Std. Range PC
- 4.8 BigZed - Std. MILL
- 4.9 Sill Clip Face - Punch Window - Std. Range PC
- 4.10 Vermin Flashing - PC on Request
- 4.11a Type 1 Jamb Tray Right - With WANZ
- 4.11b Type 1 Jamb Tray Left - With WANZ
- 4.12a Type 2 Jamb Tray Left - Without WANZ
- 4.12b Type 2 Jamb Tray Left - Without WANZ

5.0 Suggested Membrane & Tapes :

- 5.1 Flexible Vapour Open - WRB
- 5.2 Sill Tape -150mm
- 5.3 Fabric Flashing Tape - 60mm
- 5.4 Wet Seal Adhesion Tape
- 6.0 Fixings
- 6.1 SS304 10gx20mm Hex-TekSD Screw 10mm Hex
- 6.2 SS304 8gx35mm PH SD Screw #2 Sq.Dr
- 6.3 SS304 12gx90mm Hextek Screw 10mm Hex
- 6.4 SS304 M6 x 75mm HARDTEC Screwbolt 9mm Hex Dr.
- 6.5 SS304 6g x 16mm CSK SD ST Screw
- 6.6 SS304 6g x 16mm PAN SD ST Screw

7.0 Aluminium Flashings

- 7.1 Jamb Flashing Std. Range PC
- 7.2 AL 1.6mm Custom Folded
- 7.3 AL 1.8mm Custom Folded

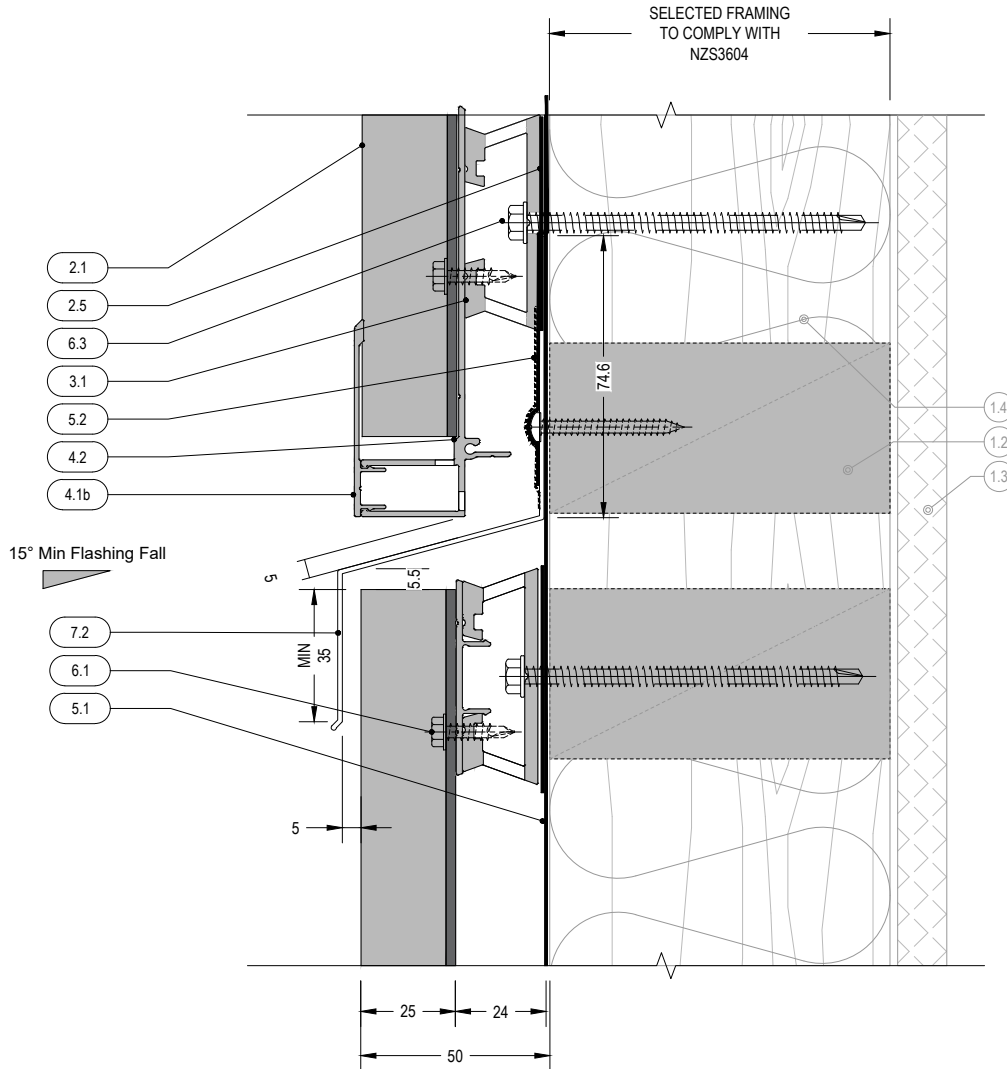
Horizontal Joint

Detail Number

AC-V-08

Version

[v1] Dec. 2021



1. Structure : By Others

- 1.1 Concrete
- 1.2 Timber
- 1.3 Internal Lining
- 1.4 Insulation
- 1.5 Fibre Cement RWU
- 1.6 Window Joinery
- 1.7 Approved Sealant on PEF Rod to suit gap

2.0 ALIClad Elements :

- 2.1 ALIClad Vertical Shiplap Weatherboard Cladding
- 2.2a AC-Starter - Std. MILL
- 2.4 AC-Clamp Channel - Std. MILL
- 2.5 Butyl Pad

3.0 Cladding Support Elements :

- 3.1 AlphaRail20 - 20mm Aluminium Cavity Battens
- 3.1a AlphaClip - All 1.6mm Packer
- 3.1b AlphaClip3 - All 3mm Packer
- 3.1c AlphaClip5 - All 5mm Packer
- 3.1d AlphaClip10 - All 10mm Packer

4.0 BA-2Pc Flashing & Junction Elements :

- 4.1a J-Mould Base - PC on Request
- 4.1b J-Mould Face - Std. Range PC
- 4.2 Drained BOC Base - PC on Request
- 4.3a Internal Corner Base - Std. MILL

4.3b Internal Corner Face - Std. Range PC

- 4.4a External Corner Base - Std. MILL
- 4.4b External Corner Face - Std. Range PC
- 4.5a Vertical Joints Base - Std. MILL
- 4.5b Vertical Joints Face - Std. Range PC
- 4.6 Jamb Clip - Std. MILL
- 4.7 Sill Clip Face - Flush Window - Std. Range PC
- 4.8 BigZed - Std. MILL
- 4.9 Sill Clip Face - Punch Window - Std. Range PC
- 4.10 Vermin Flashing - PC on Request

- 4.11a Type 1 Jamb Tray Right - With WANZ
- 4.11b Type 1 Jamb Tray Left - With WANZ
- 4.12a Type 2 Jamb Tray Left - Without WANZ
- 4.12b Type 2 Jamb Tray Left - Without WANZ

5.0 Suggested Membrane & Tapes :

- 5.1 Flexible Vapour Open - WRB
- 5.2 Sill Tape -150mm
- 5.3 Fabric Flashing Tape - 60mm
- 5.4 Wet Seal Adhesion Tape

7.0 Aluminium Flashings

- 7.1 Jamb Flashing - Std. Range PC
- 7.2 AL 1.6mm Custom Folded
- 7.3 AL 1.8mm Custom Folded

Interstorey Joint

Detail Number

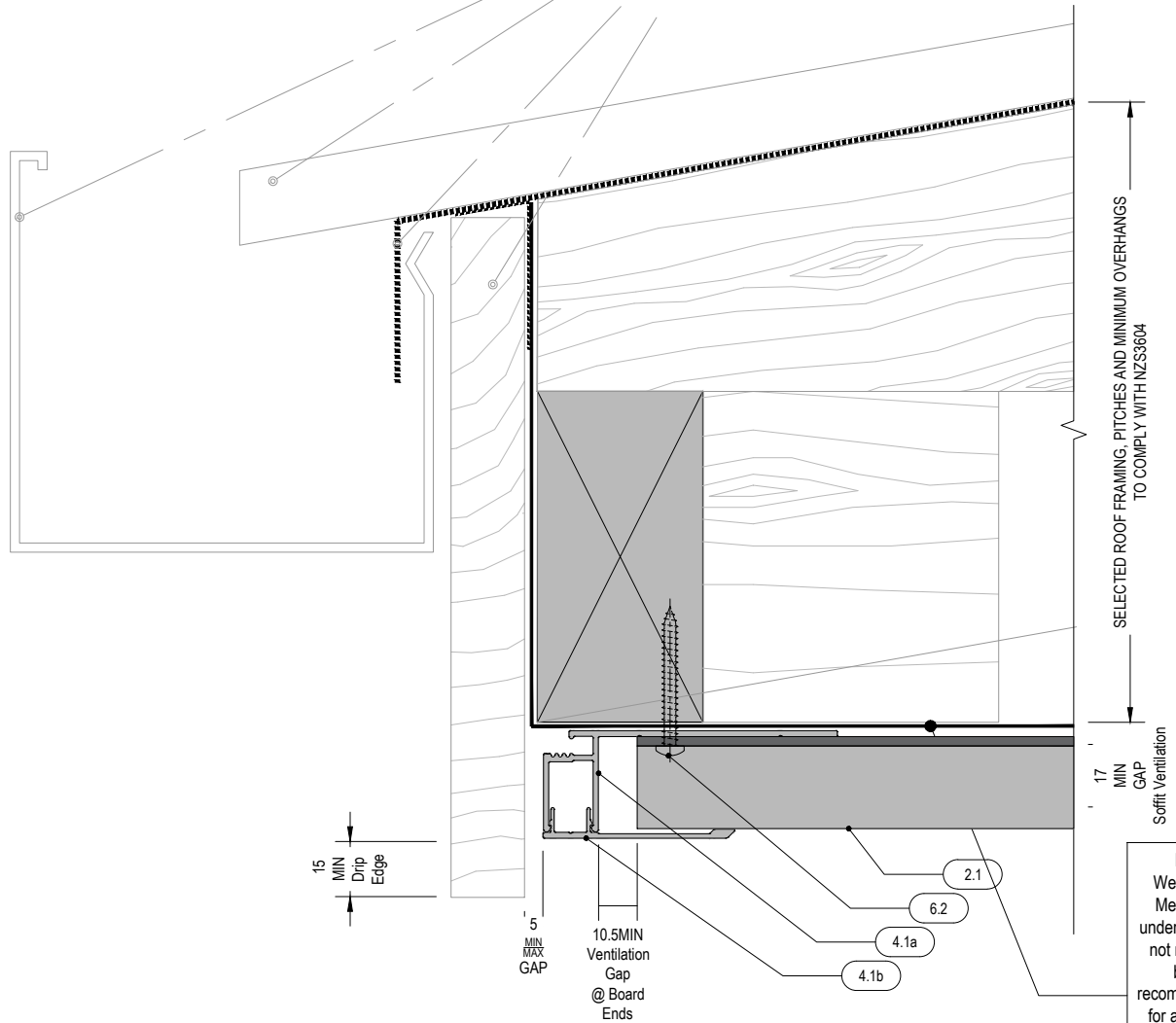
AC-V-09

Version

[v1] Dec. 2021

PRE-PUNCHED "SOFFIT VENT" WEATHERBOARD OFFERED.
CAREFUL PLACEMENT ENSURES VENTILATION ACHIEVED.
V136 PROFILE BOARD.
REFER TO Detail AC-V-14

Roofing, Barge/Fascia, Gutter & Roof Membrane
-By Others



1. Structure : By Others

- 1.1 Concrete
- 1.2 Timber
- 1.3 Internal Lining
- 1.4 Insulation
- 1.5 Fibre Cement RWU
- 1.6 Window Joinery
- 1.7 Approved Sealant on PEF Rod to suit gap

2.0 AIClAd Elements :

- 2.1 AIClAd Vertical Shiplap Weatherboard Cladding
- 2.2a AC-Starter - Std. MILL
- 2.4 AC-Clamp Channel - Std. MILL
- 2.5 Butyl Pad

3.0 Cladding Support Elements :

- 3.1 AlphaRail20 - 20mm Aluminium Cavity Battens
- 3.1a AlphaClip - All 1.6mm Packer
- 3.1b AlphaClip3 - All 3mm Packer
- 3.1c AlphaClip5 - All 5mm Packer
- 3.1d AlphaClip10 - All 10mm Packer

4.0 BA-2Pc Flashing & Junction Elements :

- 4.1a J-Mould Base - PC on Request
- 4.1b J-Mould Face - Std. Range PC
- 4.2 Drained BOC Base - PC on Request
- 4.3a Internal Corner Base - Std. MILL

- 4.3b Internal Corner Face - Std. Range PC
- 4.4a External Corner Base - Std. MILL
- 4.4b External Corner Face - Std. Range PC
- 4.5a Vertical Joiner Base - Std. MILL
- 4.5b Vertical Joiner Face - Std. Range PC
- 4.6 Jamb Clip - Std. MILL
- 4.7 Sill Clip Face - Flush Window - Std. Range PC
- 4.8 BigZed - Std. MILL
- 4.9 Sill Clip Face - Punch Window - Std. Range PC
- 4.10 Vermin Flashing - PC on Request

- 4.11a Type 1 Jamb Tray Right - With WANZ
- 4.11b Type 1 Jamb Tray Left - With WANZ
- 4.12a Type 2 Jamb Tray Left - Without WANZ
- 4.12b Type 2 Jamb Tray Left - Without WANZ

5.0 Suggested Membrane & Tapes :

- 5.1 Flexible Vapour Open - WRB
- 5.2 Sill Tape -150mm
- 5.3 Fabric Flashing Tape - 60mm
- 5.4 Wet Seal Adhesion Tape
- 6.0 Fixings
- 6.1 SS304 10gx20mm Hex-TekSD Screw 10mm Hex
- 6.2 SS304 8gx35mm PH SD Screw #2 Sq.Dr
- 6.3 SS304 12gx90mm Hextek Screw 10mm Hex
- 6.4 SS304 M6 x 75mm HARDTEC Screwbolt 9mm Hex Dr.
- 6.5 SS304 6g x 16mm CSK SD ST Screw
- 6.6 SS304 6g x 16mm PAN SD ST Screw

7.0 Aluminium Flashings

- 7.1 Jamb Flashing - Std. Range PC
- 7.2 AL 1.6mm Custom Folded
- 7.3 AL 1.8mm Custom Folded

Barge to Soffit

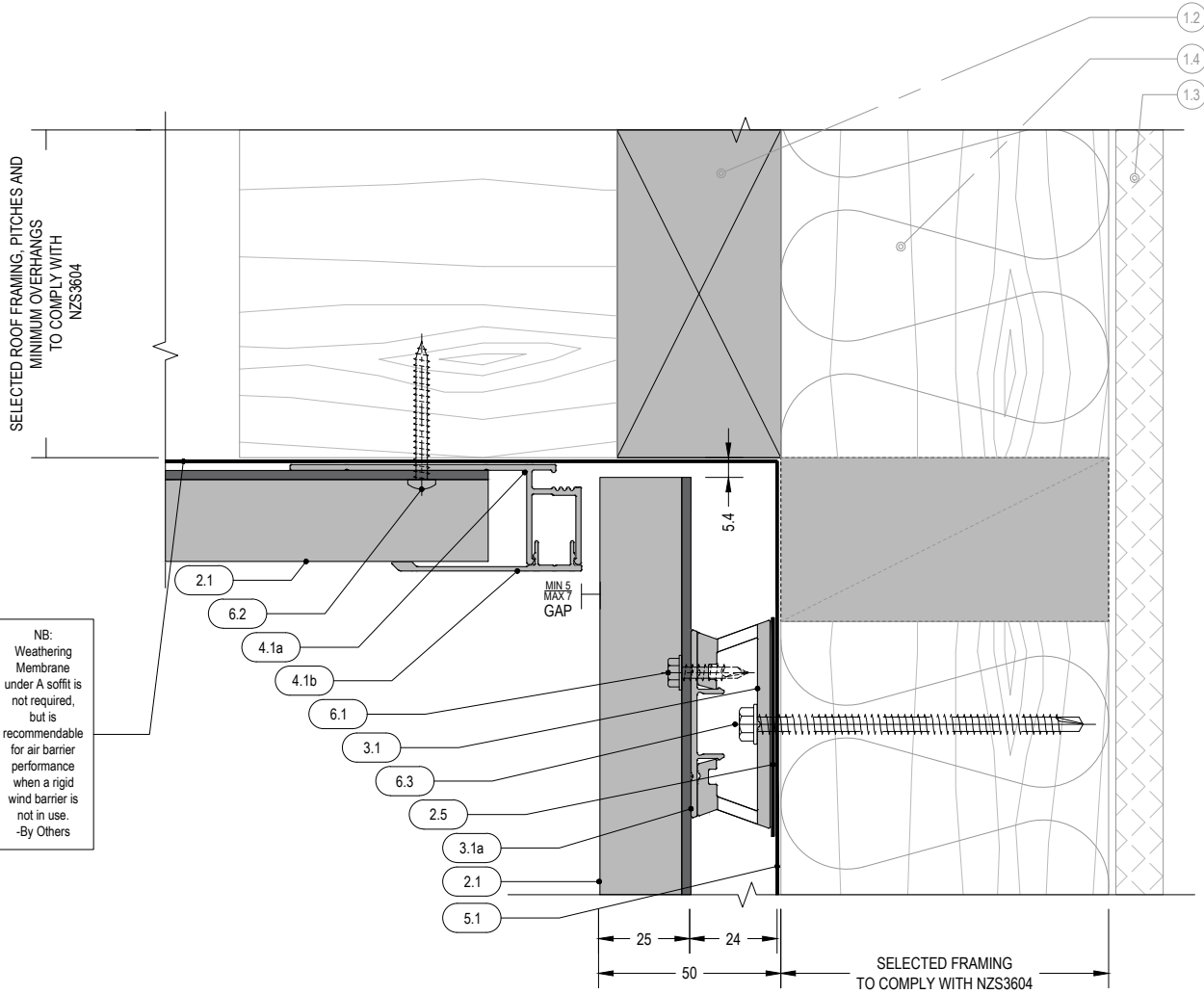
Detail Number

AC-V-10.1

Version

[v1] Dec. 2021

PRE-PUNCHED "SOFFIT VENT" WEATHERBOARD OFFERED.
CAREFUL PLACEMENT ENSURES VENTILATION ACHIEVED.
V136 PROFILE BOARD.
REFER TO Detail AC-V-14



NB:
Weathering Membrane under A soffit is not required, but is recommendable for air barrier performance when a rigid wind barrier is not in use. -By Others

1. Structure : By Others

- 1.1 Concrete
- 1.2 Timber
- 1.3 Internal Lining
- 1.4 Insulation
- 1.5 Fibre Cement RWU
- 1.6 Window Joinery
- 1.7 Approved Sealant on PEF Rod to suit gap

2.0 AIClud Elements :

- 2.1 AIClud Vertical Shiplap Weatherboard Cladding
- 2.2a AC-Starter - Std. MILL
- 2.4 AC-Clamp Channel - Std. MILL
- 2.5 Butyl Pad
- 3.0 Cladding Support Elements :
- 3.1 AlphaRail20 - 20mm Aluminium Cavity Battens
- 3.1a AlphaClip - All 1.6mm Packer
- 3.1b AlphaClip3 - All 3mm Packer
- 3.1c AlphaClip5 - All 5mm Packer
- 3.1d AlphaClip10 - All 10mm Packer

4.0 BA-2Pc Flashing & Junction Elements :

- 4.1a J-Mould Base - PC on Request
- 4.1b J-Mould Face - Std. Range PC
- 4.2 Drained BOC Base - PC on Request
- 4.3a Internal Corner Base - Std. MILL

- 4.3b Internal Corner Face - Std. Range PC
- 4.4a External Corner Base - Std. MILL
- 4.4b External Corner Face - Std. Range PC
- 4.5a Vertical Joiner Base - Std. MILL
- 4.5b Vertical Joiner Face - Std. Range PC
- 4.6 Jamb Clip - Std. MILL
- 4.7 Sill Clip Face - Flush Window - Std. Range PC
- 4.8 BigZed - Std. MILL
- 4.9 Sill Clip Face - Punch Window - Std. Range PC
- 4.10 Vermin Flashing - PC on Request

- 4.11a Type 1 Jamb Tray Right - With WANZ
- 4.11b Type 1 Jamb Tray Left - With WANZ
- 4.12a Type 2 Jamb Tray Left - Without WANZ
- 4.12b Type 2 Jamb Tray Left - Without WANZ

5.0 Suggested Membrane & Tapes :

- 5.1 Flexible Vapour Open - WRB
- 5.2 Sill Tape - 150mm
- 5.3 Fabric Flashing Tape - 60mm
- 5.4 Wet Seal Adhesion Tape
- 6.0 Fixings
- 6.1 SS304 10gx20mm Hex-TekSD Screw 10mm Hex
- 6.2 SS304 8gx35mm PH SD Screw #2 Sq.Dr
- 6.3 SS304 12gx90mm Hextek Screw 10mm Hex
- 6.4 SS304 M6 x 75mm HARDTEC Screwbolt 9mm Hex Dr.
- 6.5 SS304 6g x 16mm CSK SD ST Screw
- 6.6 SS304 6g x 16mm PAN SD ST Screw

7.0 Aluminium Flashings

- 7.1 Jamb Flashing - Std. Range PC
- 7.2 AL 1.6mm Custom Folded
- 7.3 AL 1.8mm Custom Folded

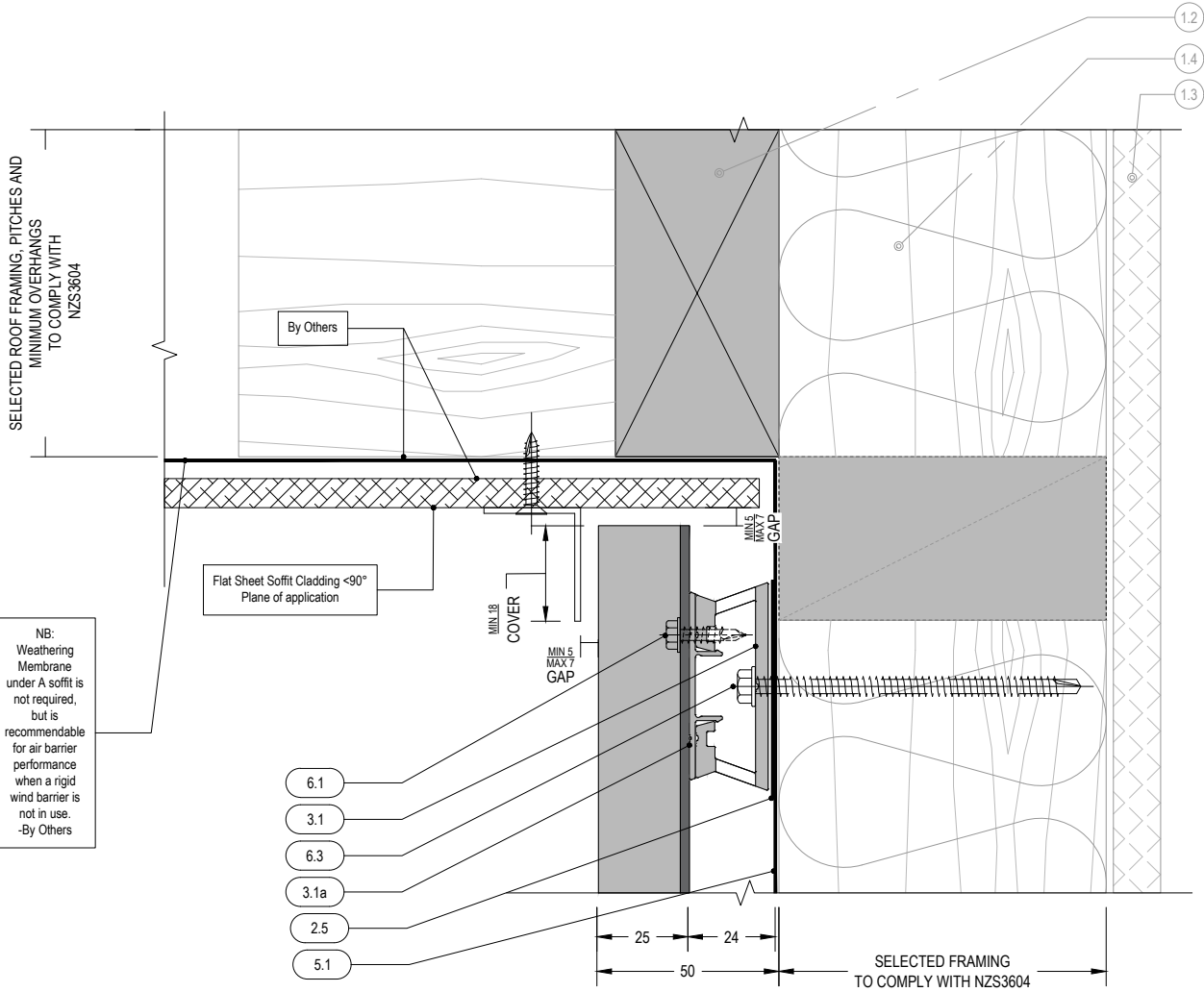
Soffit to Wall

Detail Number

AC-V-11.1

Version

[v1] Dec. 2021



1. Structure : By Others

- 1.1 Concrete
- 1.2 Timber
- 1.3 Internal Lining
- 1.4 Insulation
- 1.5 Fibre Cement RWU
- 1.6 Window Joinery
- 1.7 Approved Sealant on PEF Rod to suit gap

2.0 AiClad Elements :

- 2.1 AiClad Vertical Shiplap Weatherboard Cladding
- 2.2a AC-Starter - Std. MILL
- 2.4 AC-Clamp Channel - Std. MILL
- 2.5 Butyl Pad
- 3.0 Cladding Support Elements :
- 3.1 AlphaRail20 - 20mm Aluminium Cavity Battens
- 3.1a AlphaClip - All 1.6mm Packer
- 3.1b AlphaClip3 - All 3mm Packer
- 3.1c AlphaClip5 - All 5mm Packer
- 3.1d AlphaClip10 - All 10mm Packer

4.0 BA-2Pc Flashing & Junction Elements :

- 4.1a J-Mould Base - PC on Request
- 4.1b J-Mould Face - Std. Range PC
- 4.2 Drained BOC Base - PC on Request
- 4.3a Internal Corner Base - Std. MILL

- 4.3b Internal Corner Face - Std. Range PC
- 4.4a External Corner Base - Std. MILL
- 4.4b External Corner Face - Std. Range PC
- 4.5a Vertical Jointer Base - Std. MILL
- 4.5b Vertical Jointer Face - Std. Range PC
- 4.6 Jamb Clip - Std. MILL
- 4.7 Sill Clip Face - Flush Window - Std. Range PC
- 4.8 BigZed - Std. MILL
- 4.9 Sill Clip Face - Punch Window - Std. Range PC
- 4.10 Vermin Flashing - PC on Request

- 4.11a Type 1 Jamb Tray Right - With WANZ
- 4.11b Type 1 Jamb Tray Left - With WANZ
- 4.12a Type 2 Jamb Tray Left - Without WANZ
- 4.12b Type 2 Jamb Tray Right - Without WANZ

5.0 Suggested Membrane & Tapes :

- 5.1 Flexible Vapour Open - WRB
- 5.2 Sill Tape -150mm
- 5.3 Fabric Flashing Tape - 60mm
- 5.4 Wet Seal Adhesion Tape
- 6.0 Fixings
- 6.1 SS304 10gx20mm Hex-TekSD Screw 10mm Hex
- 6.2 SS304 8gx35mm PH SD Screw #2 Sq,Dr
- 6.3 SS304 12gx90mm Hextek Screw 10mm Hex
- 6.4 SS304 M6 x 75mm HARDTEC Screwbolt 9mm Hex Dr.
- 6.5 SS304 6g x 16mm CSK SD ST Screw
- 6.6 SS304 6g x 16mm PAN SD ST Screw

7.0 Aluminium Flashings

- 7.1 Jamb Flashing Std. Range PC
- 7.2 AL 1.6mm Custom Folded
- 7.3 AL 1.8mm Custom Folded

Soffit to Wall <math><90^\circ</math>

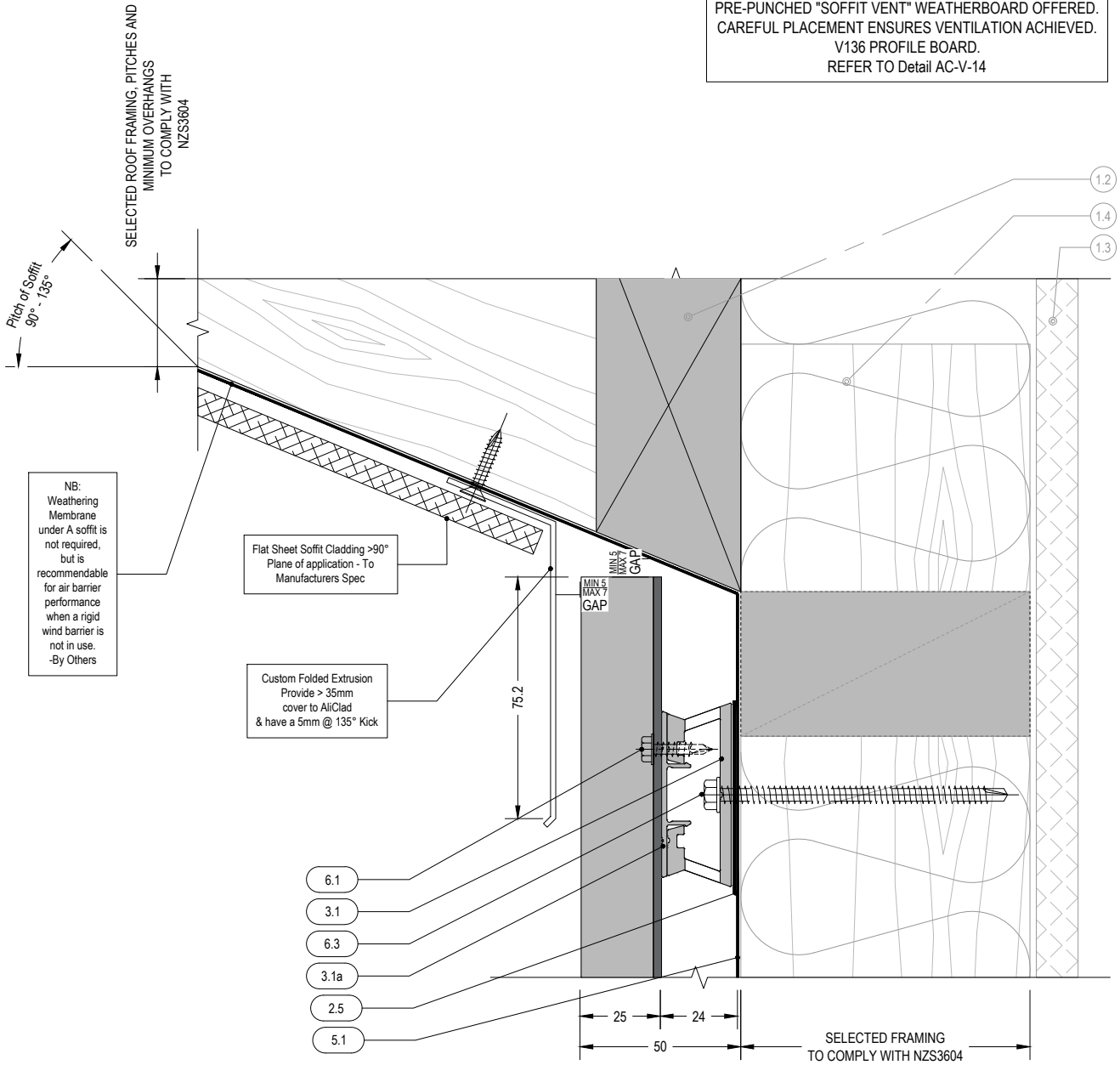
Detail Number

AC-V-12.1

Version

[v1] Dec. 2021

PRE-PUNCHED "SOFFIT VENT" WEATHERBOARD OFFERED.
CAREFUL PLACEMENT ENSURES VENTILATION ACHIEVED.
V136 PROFILE BOARD.
REFER TO Detail AC-V-14



NB:
Weathering Membrane under A soffit is not required, but is recommendable for air barrier performance when a rigid wind barrier is not in use.
-By Others

Flat Sheet Soffit Cladding >90°
Plane of application - To Manufacturers Spec

Custom Folded Extrusion
Provide > 35mm cover to AiClad & have a 5mm @ 135° Kick

- 6.1
- 3.1
- 6.3
- 3.1a
- 2.5
- 5.1

SELECTED FRAMING TO COMPLY WITH NZS3604

1. Structure : By Others

- 1.1 Concrete
- 1.2 Timber
- 1.3 Internal Lining
- 1.4 Insulation
- 1.5 Fibre Cement RWU
- 1.6 Window Joinery
- 1.7 Approved Sealant on PEF Rod to suit gap

2.0 AiClad Elements :

- 2.1 AiClad Vertical Shiplap Weatherboard Cladding
- 2.2a AC-Starter - Std. MILL
- 2.4 AC-Clamp Channel - Std. MILL
- 2.5 Butyl Pad
- 3.0 Cladding Support Elements :
- 3.1 AlphaRail20 - 20mm Aluminium Cavity Battens
- 3.1a AlphaClip - All 1.6mm Packer
- 3.1b AlphaClip3 - All 3mm Packer
- 3.1c AlphaClip5 - All 5mm Packer
- 3.1d AlphaClip10 - All 10mm Packer
- 4.0 BA-2Pc Flashing & Junction Elements :
- 4.1a J-Mould Base - PC on Request
- 4.1b J-Mould Face - Std. Range PC
- 4.2 Drained BOC Base - PC on Request
- 4.3a Internal Corner Base - Std. MILL

- 4.3b Internal Corner Face - Std. Range PC
- 4.4a External Corner Base - Std. MILL
- 4.4b External Corner Face - Std. Range PC
- 4.5a Vertical Joiner Base - Std. MILL
- 4.5b Vertical Joiner Face - Std. Range PC
- 4.6 Jamb Clip - Std. MILL
- 4.7 Sill Clip Face - Flush Window - Std. Range PC
- 4.8 BigZed - Std. MILL
- 4.9 Sill Clip Face - Punch Window - Std. Range PC
- 4.10 Vermin Flashing - PC on Request
- 4.11a Type 1 Jamb Tray Right - With WANZ
- 4.11b Type 1 Jamb Tray Left - With WANZ
- 4.12a Type 2 Jamb Tray Left - Without WANZ
- 4.12b Type 2 Jamb Tray Left - Without WANZ

5.0 Suggested Membrane & Tapes :

- 5.1 Flexible Vapour Open - WRB
- 5.2 Sill Tape - 150mm
- 5.3 Fabric Flashing Tape - 60mm
- 5.4 Wet Seal Adhesion Tape
- 6.0 Fixings
- 6.1 SS304 10gx20mm Hex-TekSD Screw 10mm Hex
- 6.2 SS304 8gx35mm PH SD Screw #2 Sq.Dr
- 6.3 SS304 12gx90mm Hextek Screw 10mm Hex
- 6.4 SS304 M6 x 75mm HARDTEC Screwbolt 9mm Hex Dr.
- 6.5 SS304 6g x 16mm CSK SD ST Screw
- 6.6 SS304 6g x 16mm PAN SD ST Screw

7.0 Aluminium Flashings

- 7.1 Jamb Flashing - Std. Range PC
- 7.2 AL 1.6mm Custom Folded
- 7.3 AL 1.8mm Custom Folded

Soffit to Wall >90°

Detail Number
AC-V-13.1

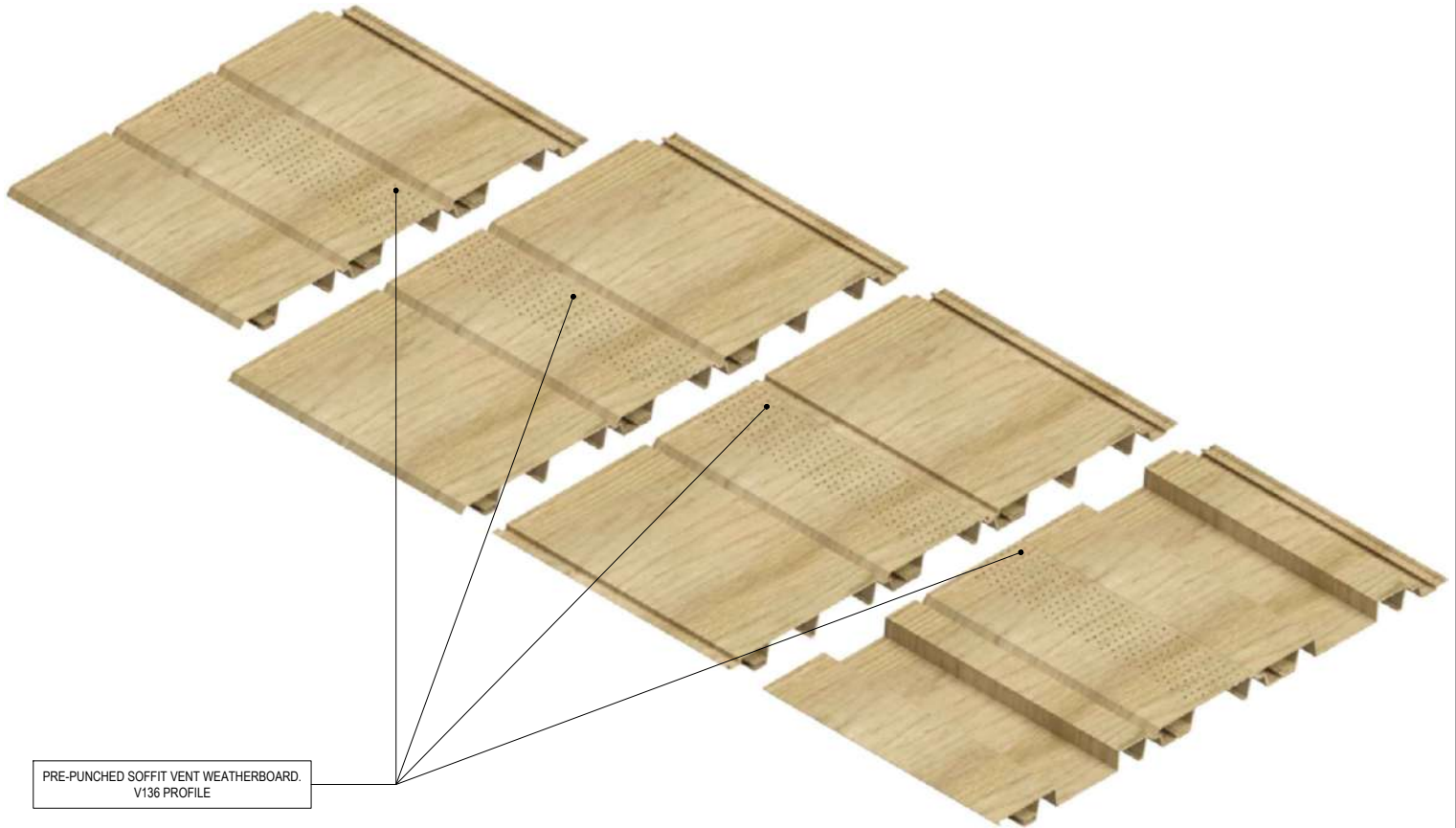
Version

[v1] Dec. 2021



MATERIALS • SYSTEMS • SOLUTIONS

ALICLAD



PRE-PUNCHED SOFFIT VENT WEATHERBOARD,
V136 PROFILE

1. Structure : By Others

- 1.1 Concrete
- 1.2 Timber
- 1.3 Internal Lining
- 1.4 Insulation
- 1.5 Fibre Cement RWU
- 1.6 Window Joinery
- 1.7 Approved Sealant on PEF Rod to suit gap

2.0 AIClad Elements :

- 2.1 AIClad Vertical Shiplap Weatherboard Cladding
- 2.2a AC-Starter - Std. MILL
- 2.4 AC-Clamp Channel - Std. MILL
- 2.5 Butyl Pad
- 3.0 Cladding Support Elements :
- 3.1 AlphaRail20 - 20mm Aluminium Cavity Battens
- 3.1a AlphaClip - All 1.6mm Packer
- 3.1b AlphaClip3 - All 3mm Packer
- 3.1c AlphaClip5 - All 5mm Packer
- 3.1d AlphaClip10 - All 10mm Packer

4.0 BA-2Pc Flashing & Junction Elements :

- 4.1a J-Mould Base - PC on Request
- 4.1b J-Mould Face - Std. Range PC
- 4.2 Drained BOC Base - PC on Request
- 4.3a Internal Corner Base - Std. MILL

- 4.3b Internal Corner Face - Std. Range PC
- 4.4a External Corner Base - Std. MILL
- 4.4b External Corner Face - Std. Range PC
- 4.5a Vertical Jointer Base - Std. MILL
- 4.5b Vertical Jointer Face - Std. Range PC
- 4.6 Jamb Clip - Std. MILL
- 4.7 Sill Clip Face - Flush Window - Std. Range PC
- 4.8 BigZed - Std. MILL
- 4.9 Sill Clip Face - Punch Window - Std. Range PC
- 4.10 Vermin Flashing - PC on Request
- 4.11a Type 1 Jamb Tray Right - With WANZ
- 4.11b Type 1 Jamb Tray Left - With WANZ
- 4.12a Type 2 Jamb Tray Left - Without WANZ
- 4.12b Type 2 Jamb Tray Left - Without WANZ

5.0 Suggested Membrane & Tapes :

- 5.1 Flexible Vapour Open - WRB
- 5.2 Sill Tape -150mm
- 5.3 Fabric Flashing Tape - 60mm
- 5.4 Wet Seal Adhesion Tape
- 6.0 Fixings
- 6.1 SS304 10gx20mm Hex-TekSD Screw 10mm Hex
- 6.2 SS304 8gx35mm PH SD Screw #2 Sq.Dr
- 6.3 SS304 12gx90mm Hextek Screw 10mm Hex
- 6.4 SS304 M6 x 75mm HARDTEC Screwbolt 9mm Hex Dr.
- 6.5 SS304 6g x 16mm CSK SD ST Screw
- 6.6 SS304 6g x 16mm PAN SD ST Screw

7.0 Aluminium Flashings

- 7.1 Jamb Flashing Std. Range PC
- 7.2 AL 1.6mm Custom Folded
- 7.3 AL 1.8mm Custom Folded

Punched Soffit Vent Boards

Detail Number

AC-V-14

Version

[v1] Dec. 2021



MATERIALS • SYSTEMS • SOLUTIONS