

ALICLAD



II VERTICAL II ALPHA RAIL

HIGH PERFORMANCE ALUMINIUM
WEATHERBOARD SYSTEM



MATERIALS - SYSTEMS - SOLUTIONS

ALICLAD

The Building Agency is the exclusive distributor of a cultivated selection of well-respected brand name cladding and roofing products and systems.

The Building Agency's focus is to ensure correct and comprehensive selections from our product and system ranges and to assist with design, specification and delivery of high performance buildings.

The Building Agency introduces our newly developed - ALICLAD System

Performance and aesthetics find a perfect balance in the latest contemporary aluminium cladding system designed in New Zealand for our local conditions.

The tough New Zealand climate calls for exterior products that can perform in all weather conditions, meet the most stringent code and standards, and bring elegance and architectural integrity.

AliClad, designed by The Building Agency, is a premium aluminium weatherboard system that has had every detail and feature designed, tuned and resolved. Backed by decades of local experience and international product knowledge, AliClad offers architects, builders and developers a robust and beautifully finished product, supported on an easy-to-install fixing system engineered to perform.

Designed for large-scale commercial projects with a residential application.

Designed for:

WEATHER-TIGHTNESS: The system has been designed in line with NZBC Acceptable Solutions. It is tested to be compliant with E2 via NZS4284:2008.

STRUCTURE: The AliClad system is designed for buildings in wind zones from Low to over Extra high wind loadings and engineered to be fixed at maximum span distances for easier application and reduced project costs.

FIRE PROTECTION: Aluminium is defined as non-combustible under the NZBC C clause and when correctly specified the support system forms a limited / non-combustible wall assembly. AliClad is tested for buildings over 25m in total height by a full-scale system fire performance test to BS8414.

FINISH AND AESTHETICS: Sublimated woodgrains, Flat and matt powdercoat options, Anodised, Anodised-look paint finishes, and horizontal and vertical profile alignments achieve both classic and contemporary designs with ease.

TABLE OF CONTENTS

AliClad - Horizontal - Alpha Rail

Information

AC-H-AR-CP - AliClad Compliance Statement

AC-H-AR-Apx.A.T2 - AliClad Appendix A - Table 2 - Fixing Span Table

Profiles & Accessories

AC-H-AR-PL - AliClad Parts List

AC-H-AR-PRO-01 - AliClad Cladding Profiles

AC-H-AR-PRO-02 - AliClad Trims Profiles

AC-H-AR-MDS - AliClad Mechanical Drainage System Parts

General Processing

AC-H-AR-GP-01 - Cut Board Terminations

TYPICAL DETAILS

1. CORNERS

- 1.1. External Corner
- 1.2. Internal Corner
- 1.3. External Corner - Smaller Cladding Type
- 1.4. Internal Corner - Smaller Cladding Type

2. VERTICAL JOINTS

- 2.1. Vertical Joint Typical
- 2.2. Vertical Joint Orientation Change
- 2.3. Vertical Joint Smaller Cladding Type
- 2.4. Vertical Joint Larger Cladding Type

3. HORIZONTAL JOINTS

- 3.1. Typical Horizontal Joint
- 3.2. Interstorey Joint

4. CLADDING TOP & BOTTOM

- 4.1. Top of Cladding/Parapet
- 4.2. Bottom of Cladding at Ground
- 4.4. Bottom of Cladding at Apron Roof
- 4.8. Barge to Soffit

5. SOFFITS

- 5.1. Wall Below Soffit <90°
- 5.2. Wall Above Soffit <90°
- 5.6. Wall Below Flat Sheet Soffit <90°
- 5.8. Wall Below Flat Sheet Soffit >90°

7. JOINERY

- 7.1. Residential Window Jamb - Recessed
- 7.2. Residential Window Head - Recessed
- 7.3. Residential Window Sill - Recessed
- 7.4. Residential Window Jamb - WANZ/Supported
- 7.5. Residential Window Head - WANZ/Supported
- 7.6. Residential Window Sill - WANZ/Supported

Detail List

Detail Number

AC-V-AR-DL.2

Version

SEP 2022 [v2.0]



COMPLIANCE STATEMENT

AliClad is an extruded aluminium cladding system that can be installed horizontally or vertically, comprised of 2.2mm thick interlocking weatherboards in multiple design profile options and an accompanying flashing system. The system has been designed up to extra high wind zone in accordance with NZS3604 and engineered to be fixed at increased span distances to provide simple, strong, and safe installations.

This compliance statement covers **AliClad Cladding System** on 20mm Drained & Ventilated cavities.

NZBC Clause B1 Structure

B1.1a, B1.1b, B1.1c, B1.2, B1.3.1, B1.3.2

AliClad weatherboard cladding system structural analysis was undertaken with capacities determined using and theoretical analysis. Span tables for 20mm cavities have been developed to determine the required cladding fixing, batten/rail fixing and screws to main structure fixing spacing.

The AliClad cladding system has been designed to withstand up to ± 2.40 kPa (ULS). When constructed in accordance with the structural and installation guidelines as per Appendix A, AliClad Cladding will meet NZBC Clause B1.

NZBC Clause E2 External Moisture

E2.1, E2.2, E2.3.2, E2.3.3, E2.3.5, E2.3.6, E.2.3.7

AliClad weatherboard cladding is intended to be part of a rainscreen cladding system where the panels form the outermost water shedding layer. The cladding line is expected to deflect most of the water hitting the façade. The weather resistant line is located at the back of the rainscreen cavity that is typically constructed with a flexible building wrap or rigid air barrier compliant with NZBC E2/AS1: Table 23.

Where water does penetrate the cladding line, the cavity between the cladding and the structural wall is expected to prevent water being able to migrate onto the structural wall and allow water to drain down. The cavity also allows ventilation which aids in the drying of any residual water and drying of the structural wall.

NZBC C3 Fire Performance

C1a, C1b, C3.1, C3.2, C3.3

AliClad weatherboard cladding is manufactured from solid aluminium. As per MBIE Guidance (MBIE 2817 Fire Performance of External Wall Cladding Systems) that for buildings categorised as low risk (<10m high & >1m away from relevant boundary.) There are no requirements for fire testing protocols P1 to P5 and therefore all products are suitable for use in this application.

Where consideration of fire safety is required due to proximity of relevant boundaries, AliClad can contribute to a building's performance when specified on one of the applicable non-combustible support systems available.

NZBC Clause B2 Durability

B2.1, B2.2, B2.3.1, B2.3.2

AliClad weatherboard base material is 6063-T5 grade aluminium and by its nature is inherently durable. Aluminium is a reactive metal that quickly forms a stable oxide layer upon contact with the atmosphere which seals the raw aluminium from further oxidation. Therefore, aluminium is fundamentally durable. Aluminium supports are suitable to be used in all New Zealand exposure/atmospheric zones.

In addition, the AliClad weatherboard cladding is finished using premium powder coating systems.

Timber and Plastic Battens and Fixings

On Low-Risk buildings where fire requirements allow, a timber or HDPE cavity packer batten system may be used. Where timber is used it must be at a minimum of H3.1 treatment. If applicable a suitable bond breaker must be utilised to ensure no contact between cladding, flashings, and treated battens. Fixings for AliClad must achieve >35mm structural embedment into main structure.

Refer to Appendix A Fixing Table 1

Aluminium Battens and Fixings

Cladding rails and fixings are also manufactured from aluminium and stainless steel, both materials are recognised as sufficiently durable and should remain serviceable throughout the expected serviceability of the cladding system. Fixings of Aluminium rails must achieve >45mm embedment into main structure.

Refer to Appendix A Fixing Tables 2 & 4

Galvanised Support and Battens

To meet the durability requirements, mild steel support and battens need to be protected against corrosion. Support frames must have a minimum wall thickness of 1.15BMT. Support frames are to be coated with Zinalume steel AZ150. The Building Agency only specify Zinalume coatings for buildings with Exposure Zone of B and C to achieve the durability requirement specified in NZBC Clause B2. In addition, as outlined on NZBC E2/AS1 Table 20, hidden elements coated with AZ150 can achieve 50-year durability. Fixings of galvanised support battens rails must achieve >35mm embedment into main structure.

Refer to Appendix A Fixing Tables 3 & 5

Design Responsibility

It is expected that the architect/specifier's design intent and specifications (including specified materials, & compatibility where items are subject to material run-off affecting durability) where applicable have been reviewed against the New Zealand Building Code. AliClad, when correctly specified will comply to or contribute to compliance to the following NZBC Clauses and their listed performance clauses as listed.



MATERIALS • SYSTEMS • SOLUTIONS

APPENDIX A - SPAN TABLES

Table 2: Vertically Aligned - Installed on AlphaRail20

WIND ZONE	ALICLAD TYPE				
	V136	V200	S150	S200	S200/65
	MAXIMUM ALLOWABLE SPAN (mm)				
LOW 00m/s-32m/s <0.6kPa	2200	2200	2200	2200	2200
MEDIUM 32m/s-37m/s >0.66kPa & <0.88kPa	1600	1600	1600	1600	1600
HIGH 37m/s-44m/s >0.88kPa & <1.25kPa	1200	1200	1200	1200	1200
VERY HIGH 44m/s-50m/s >1.25kPa & <1.61kPa	1000	1000	1000	1000	1000
EXTRA HIGH 50m/s-55m/s >1.61kPa & <1.9kPa	800	800	800	800	800
SPECIFIC ENGINEERING DESIGN >55m/s >1.9kPa	SED	SED	SED	SED	SED

1. C4 Evo TBS680 Flange Head Screw TX30 ($\geq 45\text{mm}$ minimum embedment, $\varnothing 4\text{mm}$ Pre-drill, $3 \times D$ Edge Distance)
 2. AlphaRail20 - 20mm Aluminium cavity battens, fixed at every stud at 600mm o/c
 3. Wind Zone Classifications - ULS From NZS3604, considered in Positive(+) Pressure and Negative(-) Suction

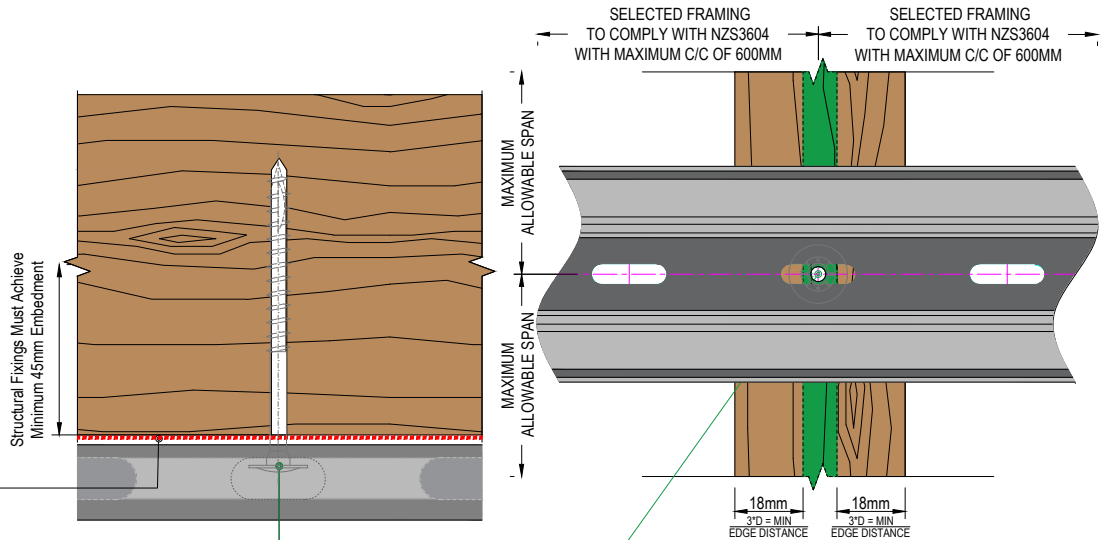
*** Design Assumptions:**

- The wind pressures are for external wind only. Internal pressures will not be applied to the cladding and assumed to be resisted by the internal lining.
- Load on each panel is uniformly distributed.
- The span/deflection limit for SLS wind load is 250mm for aluminium battens/zincalume top hats and L/175 for the AliClad boards, with the serviceability wind load equal to 68% of the ULS wind load.
- SS304 10g x 20mm HexTek SD Screw 10mm Hex (AliClad board to AlphaRail 20/Zincalume tophat.)
- Timber is assumed Radiata Pine (Group J4 for withdrawal, group 5 in shear, with a characteristic density in excess of 420kg/m^3).
 - Timber studs at 600mm o/c and
 - timber noggs/dwangs at 800mm o/c and
- For Edge Distances Framing fixing face thickness is assumed as 45mm

Selected Building Flexible Membrane/RAB/RWU must be compliant to E2:Table 23

Fixings for Horizontal Alpha Rail @ Each Nog = 800mm MAX C/C or less as appropriate to site wind zone & bracing requirements in accordance with NZS3604

ALL Fixings for Vertical Alpha Rail pre-drilled $\varnothing 4\text{mm}$ before fixing





PARTS LIST

CLADDING PROFILES

ACV136-XXX58	INDENT - AliClad V150, 150x25 V Shiplap Weatherboard, 5.8m, Mill Finish
ACV200-XXX58	INDENT - AliClad V200, 200x25 V Shiplap Weatherboard, 5.8m, Mill Finish
ACS150-XXX58	INDENT - AliClad S150, 150x25 Shadow Groove Weatherboard, 5.8m, Mill Finish
ACS200-XXX58	INDENT - AliClad S200, 200x25 Shadow Groove Weatherboard, 5.8m, Mill Finish
ACS200-65-XXX58	INDENT - AliClad S200-65, 200x25 Shadow Groove Weatherboard with 65mm & 125mm board look, 5.8m, Mill Finish

2 PIECE BASE CLIPS

ACHMDBF-58	AliClad - H Mould Base, 5.8m, Mill Finish
ACJMDBF-58	AliClad - J-Mould Base, 5.8m, Mill Finish
ACBOCBF-58	AliClad - Base of Cladding Base, 5.8m, Mill Finish
ACINTBF-58	AliClad - Internal Corner Base, 5.8m, Mill Finish
ACEXTBF-58	AliClad - External Corner Base, 5.8m, Mill Finish

2 PIECE FACES & TRIMS

ACINTFF-XXX58	INDENT - AliClad - Internal Corner Face, 5.8m, Mill Finish
ACWNS-XXX58	INDENT - AliClad - Window Sill Face, - to suit WANZ supported window, 5.8m, Mill Finish
ACWNSP-XXX58	INDENT - AliClad - Window Sill Face - to suit Punched Window, 5.8m, Mill Finish
ACJMDFF-XXX58	INDENT - AliClad - J Mould Face, 5.8m, Mill Finish
ACHMDFF-XXX58	INDENT - AliClad - H Mould Face, 5.8m, Mill Finish
ACEXTFF-XXX58	INDENT - AliClad - External Corner Face, 5.8m, Mill Finish
ACJMDBF-XXX58	INDENT - AliClad - Bottom of Cladding Base, 5.8m, Mill Finish

JUNCTION ELEMENTS

ACCZD-58	AliClad - Clamp Zed, 5.8m, Mill Finish
ACCLC-58	AliClad - Clamp Channel, 5.8m, Mill Finish
ACSTR-58	AliClad - Starter Rail, 5.8m, Mill Finish
ACJMC-58	AliClad - Jamb Clip, 5.8m, Mill Finish
ACJMF-58	AliClad - Jamb Flashing, 5.8m, Mill Finish

MECHANICAL DRAINAGE SYSTEM

ACJMT-01RIGHT	AliClad - Type 1a Jamb Tray Right
ACJMT-01LEFT	AliClad - Type 1b Jamb Tray Left
ACJMT-02RIGHT	AliClad - Type 2a Jamb Tray Right
ACJMT-02LEFT	AliClad - Type 2b Jamb Tray Left

ALPHA RAIL SUPPORT SYSTEM PROFILES

ARSPC10-05	Alpha Rail Packer Clip 10mm, 50mm MILL FINISH
ARSPC5-05	Alpha Rail Packer Clip 5mm, 50mm MILL FINISH
ARSPC3-05	Alpha Rail Packer Clip 3mm, 50mm MILL FINISH
ARSPC1-05	Alpha Rail Packer Clip 1.6mm, 50mm MILL FINISH
ARSVR20-58	Alpha Rail Vertical Rail 20mm, 5.8m MILL FINISH
ARSHR20-58	Alpha Rail Horizontal Rail 20mm, Punched, 5.8m MILL FINISH

AC - Parts List

Detail Number

AC-Part List

Version

SEP 2022 [v2.0]



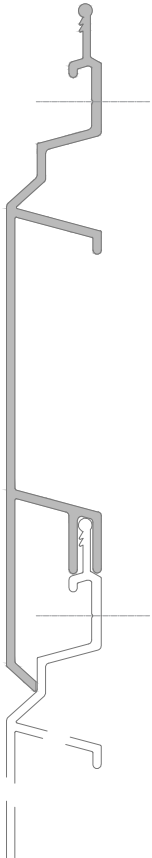
MATERIALS • SYSTEMS • SOLUTIONS

CLADDING PROFILES

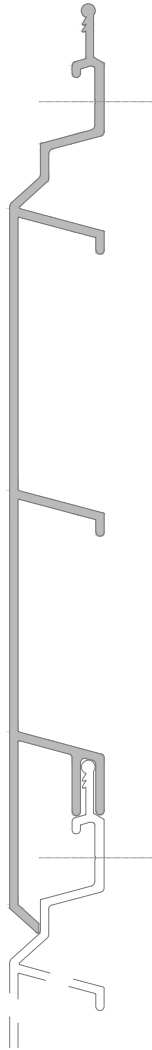
HIGH PERFORMANCE ALUMINIUM
WEATHERBOARD SYSTEM

2.1

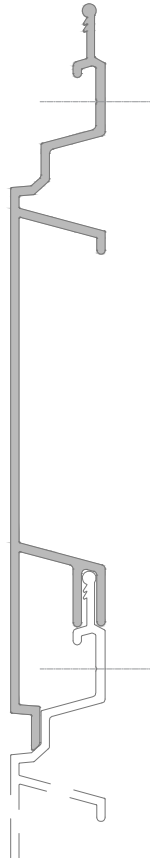
VI36



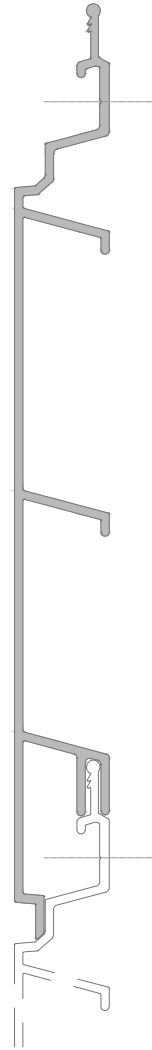
V200



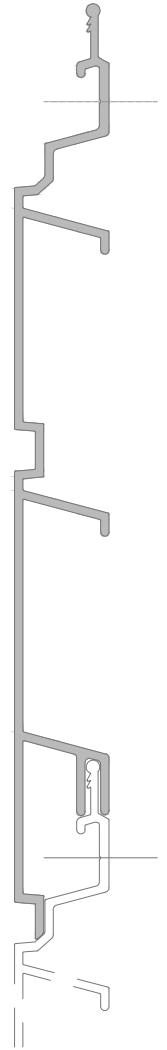
SI50



S200



S200-65



Extruded Profiles - Cladding

Detail Number

AC-PRO-01

Version

SEP 2022 [v2.0]

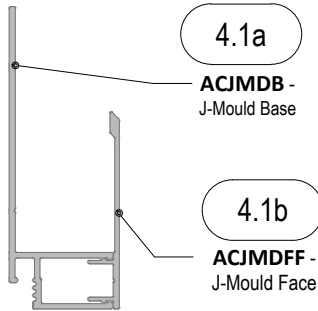


MATERIALS • SYSTEMS • SOLUTIONS

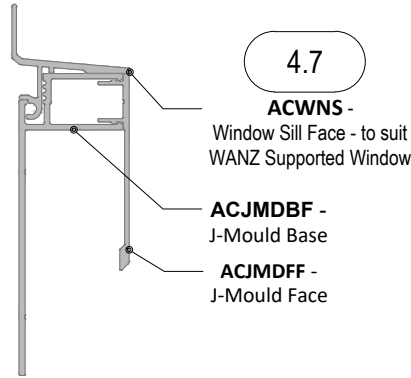
TRIMS - PROFILES

TYPICAL ASSEMBLIES

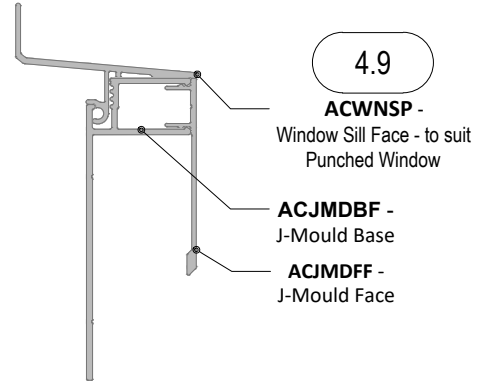
J-MOULD



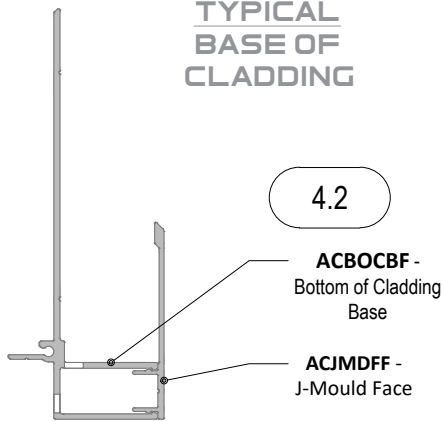
WANZ WINDOW SILL



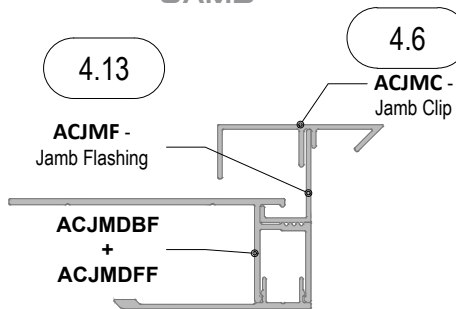
PUNCHED WINDOW SILL



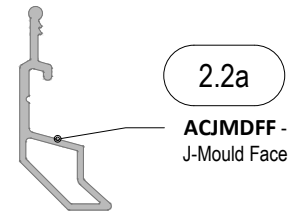
TYPICAL BASE OF CLADDING



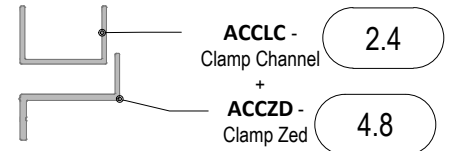
TYPICAL JAMB



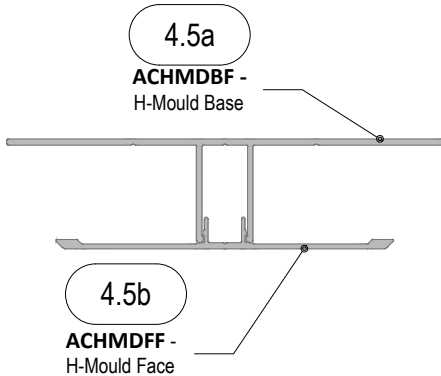
STARTER



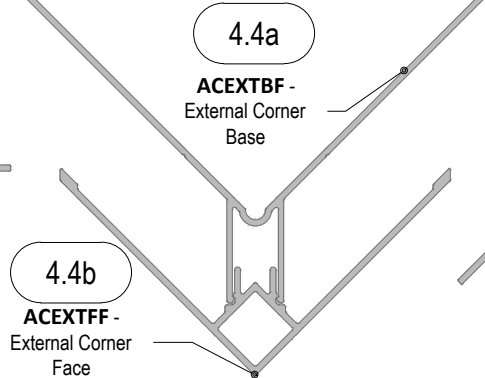
ENDER



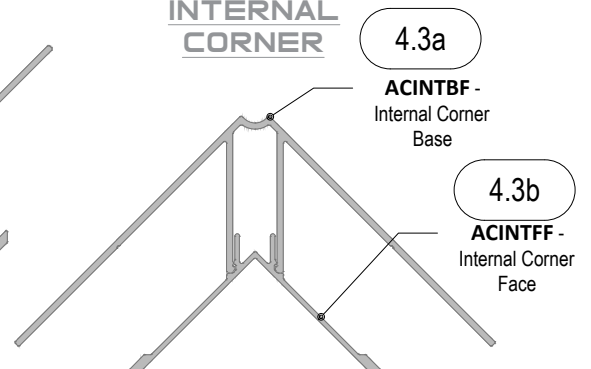
TYPICAL VERTICAL H-JOINT



EXTERNAL CORNER



INTERNAL CORNER



Extruded Profiles - Trims

Detail Number

AC-PRO-2

Version

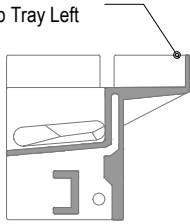
SEP 2022 [v2.0]

MECHANICAL DRAINAGE SYSTEM

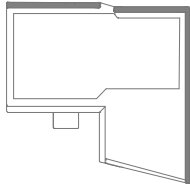
PROPRIETARY JAMB-TO-SILL DRAINAGE CLIPS

TYPE I - FOR WINDOWS USING WANZ BAR SUPPORT

ACJMT-01LEFT -
Type 1 Jamb Tray Left



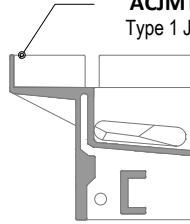
4.11a



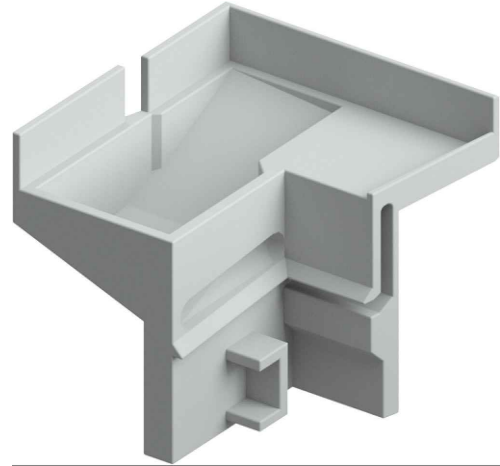
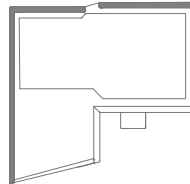
SECTION

PLAN

ACJMT-01RIGHT -
Type 1 Jamb Tray Right

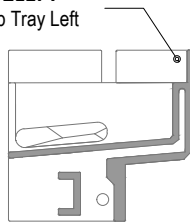


4.11b

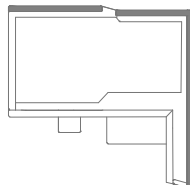


TYPE II - FOR PUNCHED OR RECESSED WINDOWS

ACJMT-02LEFT -
Type 2 Jamb Tray Left



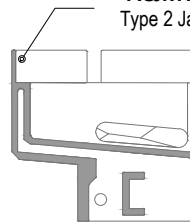
4.12b



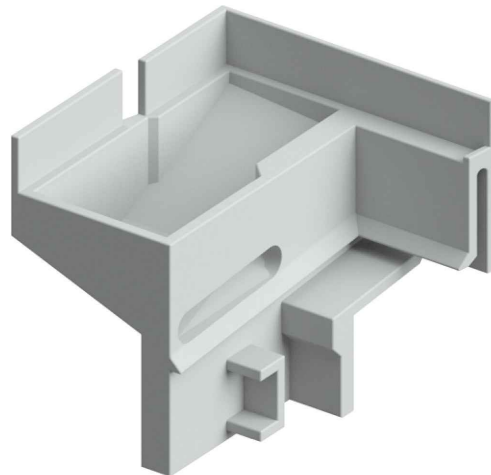
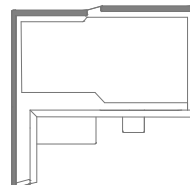
SECTION

PLAN

ACJMT-02RIGHT -
Type 2 Jamb Tray Right



4.12a



Mechanical Drainage System Parts

Detail Number

AC-V-AR-ACC-01

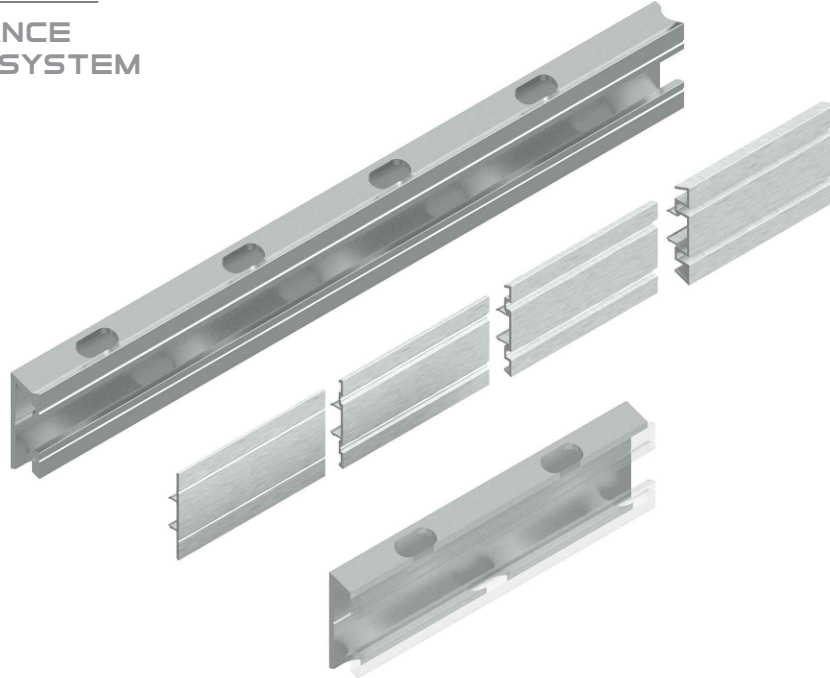
Version

SEP 2022 [v2.0]

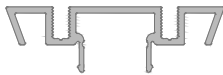


ALPHA RAIL SYSTEM

HIGH PERFORMANCE
ALUMINIUM BATTEN SYSTEM
PROFILES



3.1d



ALPHA CLIP 10MM
Order Code: AR-Clip100

3.1c



ALPHA CLIP 5MM
Order Code: AR-Clip50

3.1b



ALPHA CLIP 3MM
Order Code: AR-Clip30

3.1a



ALPHA CLIP 1.6MM
Order Code: AR-Clip16

3.1



ALPHA RAIL 20MM - 5.8LM
Order Code: AR-Rail20

3.1



ALPHA RAIL 20MM - 5.8LM
Order Code: AR-Rail20-Drained

Alpha Rail System

Detail Number

AC-V-AR-ACC-02

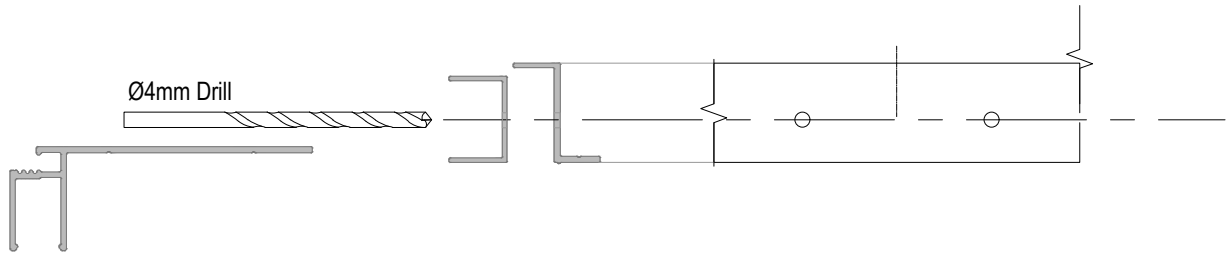
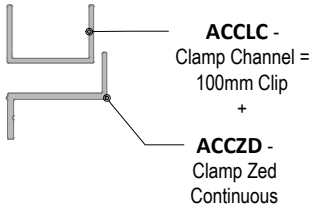
Version

SEP 2022 [v2.0]



MATERIALS • SYSTEMS • SOLUTIONS

PROCESSING - RIPPED WEATHERBOARD TERMINATION



Common location for
termination assembly :
Into J-Moulds or Corner
moulds

ACCLC - Clamp Channel 100mm
Clips Fixed with 2x No4-4 Pop
Rivets to continuous **ACCZD** at
800mm MAXIMUM centres &
100mm MAX from Ends

**Ripped Board Edge Goes
Here**



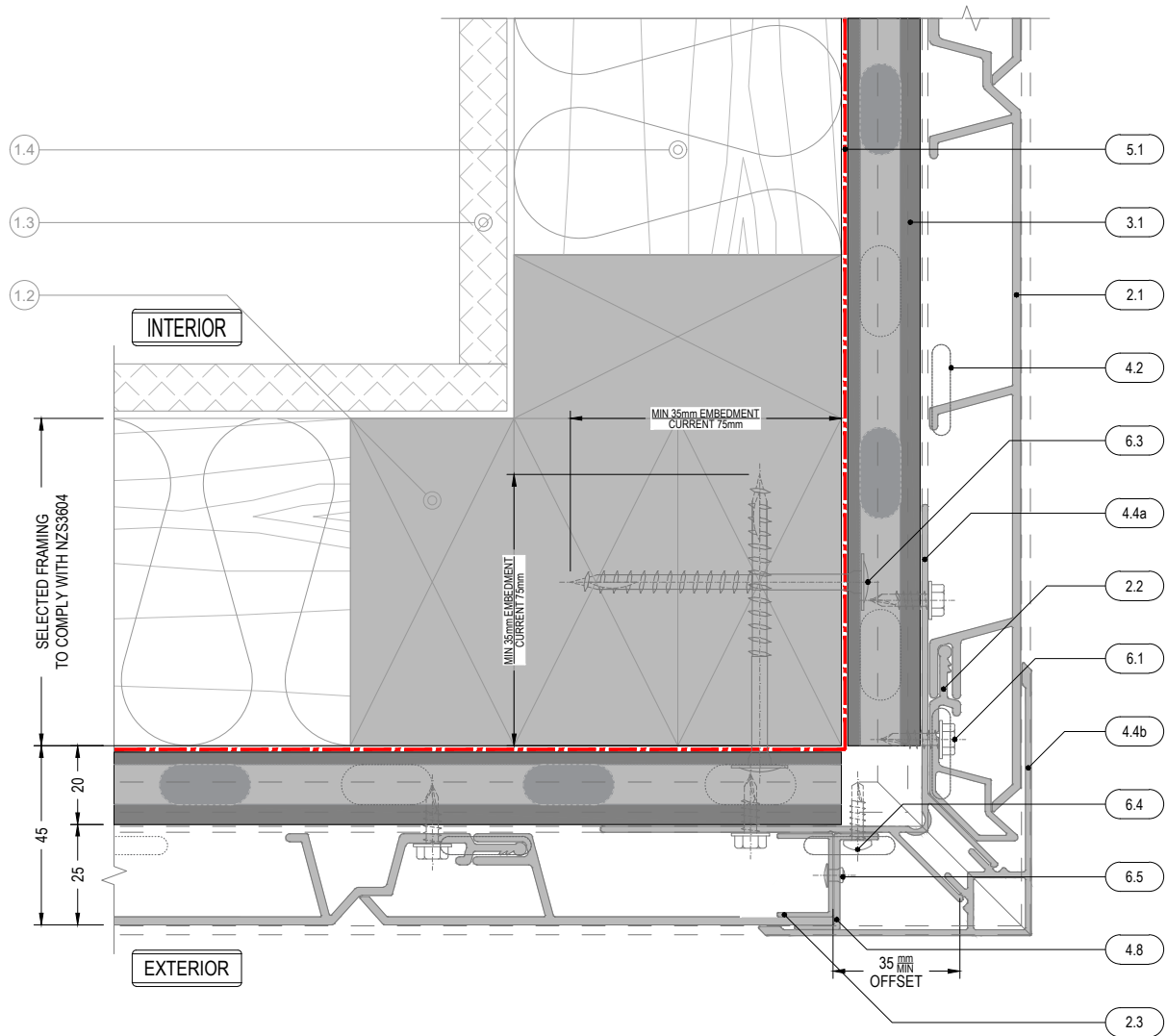
General Processing

Detail Number

AC-GP-1

Version

SEP 2022 [v2.0]



NOTE
 "2.3" and "4.8" can be pre-assembled with "6.5" according "AC-GP-1"
 "4.2" is shown as a dashed line

Structure : By Others

- 1.1 Concrete
- 1.2 Timber
- 1.3 Internal Lining
- 1.4 Insulation
- 1.5 Window Joinery
- 1.6 Approved Sealant on PEF Rod to suit gap
- 1.7 Damp Proof Course/Membrane
- 1.8 WANZ Support Bar
- 1.9 Window Head Flashing

AliClad Cladding System

- 2.0 AliClad Elements :
- 2.1 AliClad Vertical Shiplap Weatherboard Cladding
- 2.2 AC-Starter - Std. MILL
- 2.3 AC-Clamp Channel - Std. MILL

3.0

- 3.1 AlphaRail20 -
- 3.1a AlphaClip -
- 3.1b AlphaClip3 -
- 3.1c AlphaClip5 -
- 3.1d AlphaClip10 -

4.0

- 4.1a J-Mould Base -
- 4.1b J-Mould Face -
- 4.2 Drained B.o.C. Base -
- 4.3a Internal Corner Base -
- 4.3b Internal Corner Face -
- 4.4a External Corner Base -
- 4.4b External Corner Face -
- 4.5a Vertical Jointer Base -
- 4.5b Vertical Jointer Face -
- 4.6 Jamb Clip -

Cladding Support Elements :

- 20mm AL. Cavity Battens
- AL. 1.6mm Packer
- AL. 3mm Packer
- AL. 5mm Packer
- AL. 10mm Packer

Two Piece Flashing & Junction Elements :

- PC on Request
- Std. Range PC
- Std. MILL
- PC on Request
- Std. Range PC
- Std. MILL
- PC on Request
- Std. Range PC
- Std. MILL
- PC on Request
- Std. Range PC
- Std. MILL

- 4.7 Sill Clip Face - Flush Window -
- 4.8 BigZed -
- 4.9 Sill Clip Face - Punch Window -
- 4.10 Vermin Flashing -

Mechanical Windowsill Drainage Elements :

- 4.11a Typ.1 Jamb Tray Right - For Windows With WANZ
- 4.11b Typ.1 Jamb Tray Left - For Windows With WANZ
- 4.12a Typ.2 Jamb Tray Right - For Windows Without WANZ
- 4.12b Typ.2 Jamb Tray Left - For Windows Without WANZ

Auxiliary Cladding System Components

- 5.0
- 5.1 E2/AS1 Table 23 Compliant Membrane system
- 5.2 Sill Tape -150mm
- 5.3 Fabric Flashing Tape - 60mm
- 5.4 Wet Seal Adhesion Tape
- 5.5 Closed Cell EPDM Tape

6.0

- Std. Range PC
- Std. MILL
- Std. Range PC
- PC on Request
- 6.1 SS304 10gx20mm
- 6.2 SS304 8gx35mm
- 6.3 SS304 12gx75mm
- 6.4 SS304 8gx 16mm
- 6.5 AS73 4-4
- 6.6 M4x16mm
- 6.7 SS304 8gx 20mm

- Fixings:**
- HexTek SD Screw 10mm Hex
- PH SD Screw #2 Sq.Dr
- HexTek Screw 10mm Hex
- PH SD ST Screw
- Truss Pop Rivet
- CS SD Screw
- CS ST Screw

7.0

- Jamb Flashing-
- 7.1 AL. 1.6mm Custom Folded
- 7.2 AL. 1.8mm Custom Folded
- 7.3 AL. 50X20X3mm Angle
- 7.4 AL. 40X20X1.6mm Angle
- 7.5

Aluminium Flashings:

- Std. Range PC

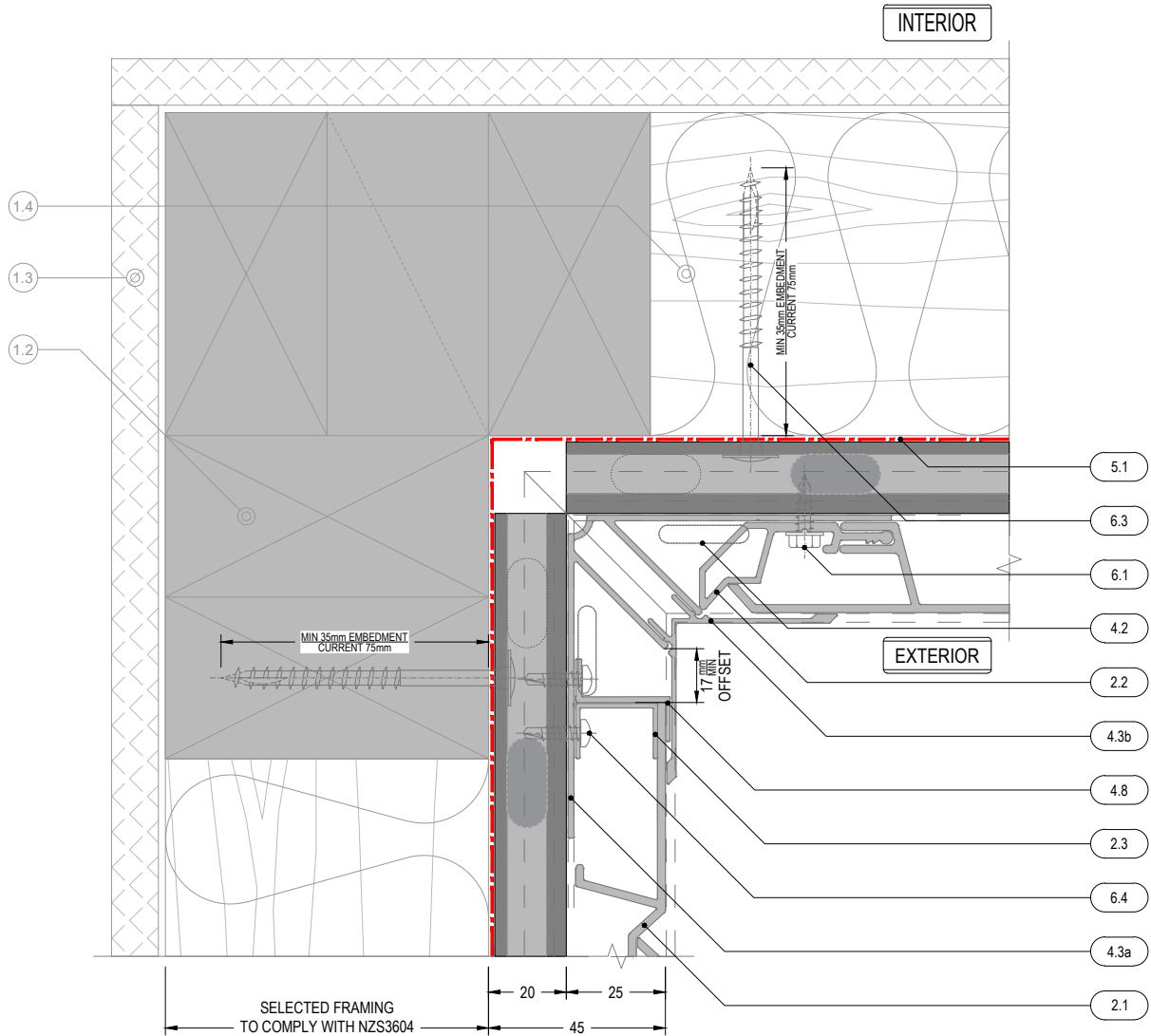
Detail Number

AC-V-AR-1.1

Version

SEP 2022 [v2.0]

External Corner



NOTE
"4.2" is shown as a dashed line

Structure : By Others

- 1.1 Concrete
- 1.2 Timber
- 1.3 Internal Lining
- 1.4 Insulation
- 1.5 Window Joinery
- 1.6 Approved Sealant on PEF Rod to suit gap
- 1.7 Damp Proof Course/Membrane
- 1.8 WANZ Support Bar
- 1.9 Window Head Flashing

AliClad Cladding System

- 2.0 AliClad Elements :
- 2.1 AliClad Vertical Shiplap Weatherboard Cladding
- 2.2 AC-Starter - Std. MILL
- 2.3 AC-Clamp Channel - Std. MILL

- 3.0
- 3.1 AlphaRail20 -
- 3.1a AlphaClip -
- 3.1b AlphaClip3 -
- 3.1c AlphaClip5 -
- 3.1d AlphaClip10 -

Two Piece Flashing & Junction Elements :

- 4.0
- 4.1a J-Mould Base -
- 4.1b J-Mould Face -
- 4.2 Drained B.o.C. Base -
- 4.3a Internal Corner Base -
- 4.3b Internal Corner Face -
- 4.4a External Corner Base -
- 4.4b External Corner Base -
- 4.5a Vertical Jointer Base -
- 4.5b Vertical Jointer Face -
- 4.6 Jamb Clip -

- Cladding Support Elements :**
- 4.7 20mm AL. Cavity Battens
 - 4.8 AL. 1.6mm Packer
 - 4.9 AL. 3mm Packer
 - 4.10 AL. 5mm Packer
 - AL. 10mm Packer

PC on Request

- Std. Range PC
- Std. MILL
- 5.0
- 5.1 E2/AS1 Table 23 Compliant Membrane system
- 5.2 Sill Tape -150mm
- 5.3 Fabric Flashing Tape - 60mm
- 5.4 Wet Seal Adhesion Tape
- 5.5 Closed Cell EPDM Tape

- 4.7 Sill Clip Face - Flush Window -
- 4.8 BigZed -
- 4.9 Sill Clip Face - Punch Window -
- 4.10 Vermin Flashing -

Mechanical Windowsill Drainage Elements :

- 4.11a Typ.1 Jamb Tray Right - For Windows With WANZ
- 4.11b Typ.1 Jamb Tray Left - For Windows With WANZ
- 4.12a Typ.2 Jamb Tray Right - For Windows Without WANZ
- 4.12b Typ.2 Jamb Tray Left - For Windows Without WANZ

Auxiliary Cladding System Components

- 6.0
- 6.1 SS304 10gx20mm HexTek SD Screw 10mm Hex
- 6.2 SS304 8gx35mm PH SD Screw #2 Sq.Dr
- 6.3 SS304 12gx75mm HexTek Screw 10mm Hex
- 6.4 SS304 8gx 16mm PH SD ST Screw
- 6.5 AS73 4-4 Truss Pop Rivet
- 6.6 M4x16mm CS SD Screw
- 6.7 SS304 8gx 20mm CS ST Screw

Fixings:

- 6.0
- 6.1 SS304 10gx20mm HexTek SD Screw 10mm Hex
- 6.2 SS304 8gx35mm PH SD Screw #2 Sq.Dr
- 6.3 SS304 12gx75mm HexTek Screw 10mm Hex
- 6.4 SS304 8gx 16mm PH SD ST Screw
- 6.5 AS73 4-4 Truss Pop Rivet
- 6.6 M4x16mm CS SD Screw
- 6.7 SS304 8gx 20mm CS ST Screw

Aluminium Flashings:

- 7.0
- 7.1 Jamb Flashing-
- 7.2 AL. 1.6mm Custom Folded
- 7.3 AL. 1.8mm Custom Folded
- 7.4 AL. 50X20X3mm Angle
- 7.5 AL. 40X20X1.6mm Angle

Suggested Membrane & Tapes :

- 7.0
- 7.1 Jamb Flashing-
- 7.2 AL. 1.6mm Custom Folded
- 7.3 AL. 1.8mm Custom Folded
- 7.4 AL. 50X20X3mm Angle
- 7.5 AL. 40X20X1.6mm Angle

Internal Corner

Detail Number

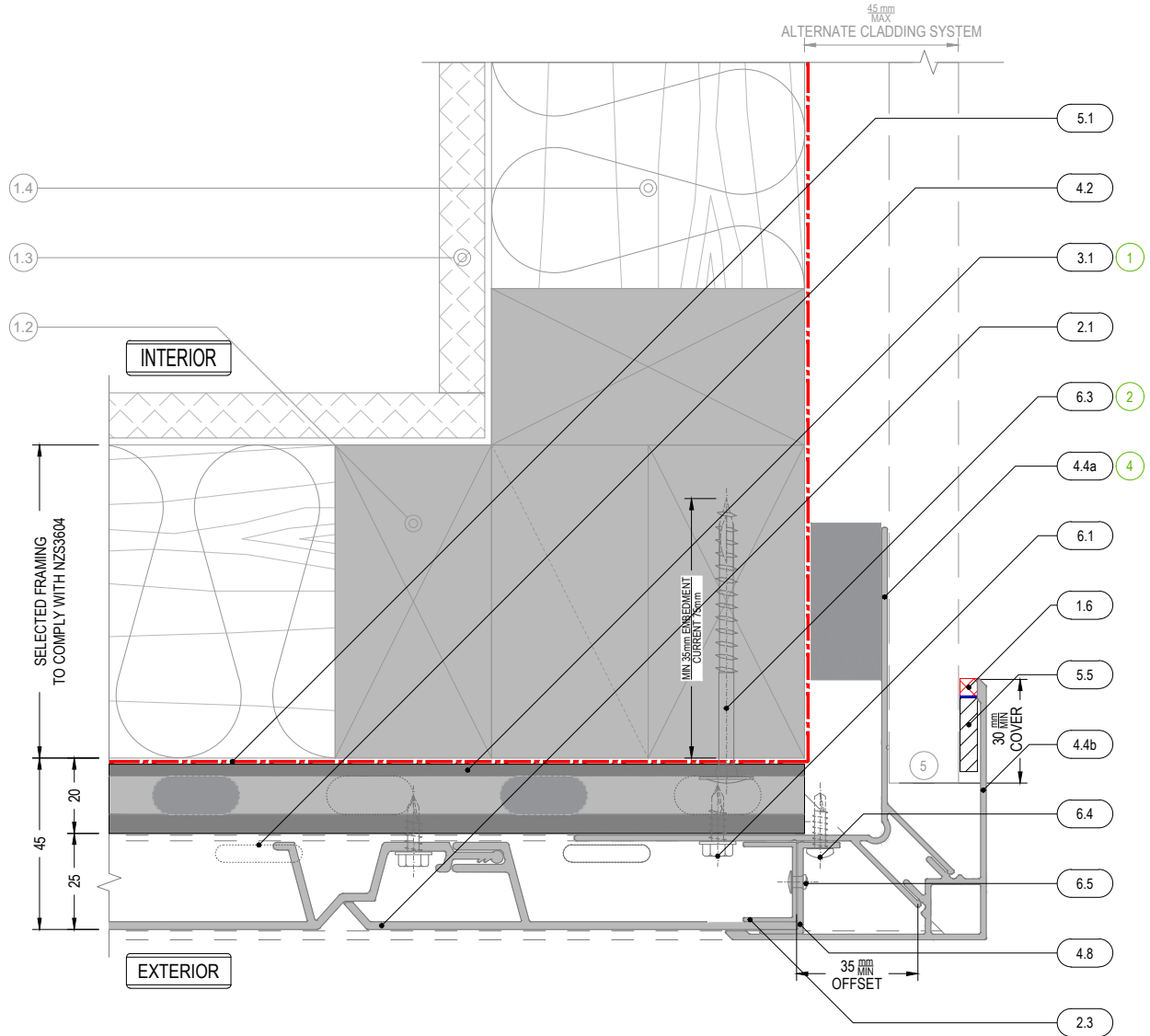
AC-V-AR-1.2

Version

SEP 2022 [v2.0]



MATERIALS • SYSTEMS • SOLUTIONS



NOTE
 "2.3" and "4.8" can be pre-assembled with "6.5" according "AC-GP-1"
 "4.2" is shown as a dashed line

SEQUENCE OF INSTALLATION



Structure : By Others

- 1.1 Concrete
- 1.2 Timber
- 1.3 Internal Lining
- 1.4 Insulation
- 1.5 Window Joinery
- 1.6 Approved Sealant on PEF Rod to suit gap
- 1.7 Damp Proof Course/Membrane
- 1.8 WANZ Support Bar
- 1.9 Window Head Flashing

AliClad Cladding System

- 2.0 AliClad Elements :
- 2.1 AliClad Vertical Shiplap Weatherboard Cladding
- 2.2 AC-Starter - Std. MILL
- 2.3 AC-Clamp Channel - Std. MILL

Cladding Support Elements :

- 3.0 AlphaRail20 -
- 3.1 AlphaClip -
- 3.1a AlphaClip3 -
- 3.1b AlphaClip5 -
- 3.1c AlphaClip10 -

Two Piece Flashing & Junction Elements :

- 4.0 J-Mould Base -
- 4.1 J-Mould Face -
- 4.2 Drained B.o.C. Base -
- 4.3a Internal Corner Base -
- 4.3b Internal Corner Face -
- 4.3c External Corner Base -
- 4.4a External Corner Base -
- 4.4b External Corner Base -
- 4.5a Vertical Jointer Base -
- 4.5b Vertical Jointer Face -
- 4.6 Jamb Clip -

Cladding Support Elements :

- 20mm AL. Cavity Battens
- AL. 1.6mm Packer
- AL. 3mm Packer
- AL. 5mm Packer
- AL.10mm Packer

PC on Request

- Std. Range PC
- Std. MILL
- Std. Range PC
- Std. MILL
- Std. Range PC
- Std. MILL
- Std. Range PC
- Std. MILL
- Std. Range PC
- Std. MILL

Cladding Support Elements :

- 4.7 Sill Clip Face - Flush Window -
- 4.8 BigZed -
- 4.9 Sill Clip Face - Punch Window -
- 4.10 Vermin Flashing -
- 4.11a Typ.1 Jamb Tray Right -
- 4.11b Typ.1 Jamb Tray Left -
- 4.12a Typ.2 Jamb Tray Right -
- 4.12b Typ.2 Jamb Tray Left -

PC on Request

- Std. Range PC
- Std. MILL
- Std. Range PC
- Std. MILL
- Std. Range PC
- Std. MILL
- Std. Range PC
- Std. MILL

Auxiliary Cladding System Components

- 5.0 E2/AS1 Table 23 Compliant Membrane system
- 5.1 Sill Tape -150mm
- 5.2 Fabric Flashing Tape - 60mm
- 5.3 Wet Seal Adhesion Tape
- 5.4 Closed Cell EPDM Tape

PC on Request

- Std. Range PC
- Std. MILL
- Std. Range PC
- Std. MILL
- Std. Range PC
- Std. MILL
- Std. Range PC
- Std. MILL

PC on Request

- Std. Range PC
- Std. MILL
- Std. Range PC
- Std. MILL
- Std. Range PC
- Std. MILL
- Std. Range PC
- Std. MILL

Suggested Membrane & Tapes :

- 7.1 AL 1.6mm Custom Folded
- 7.2 AL 1.8mm Custom Folded
- 7.3 AL 50X20X3mm Angle
- 7.4 AL 40X20X1.6mm Angle

Fixings:

- 6.1 SS304 10gx20mm HexTek SD Screw 10mm Hex
- 6.2 SS304 8gx35mm PH SD Screw #2 Sq.Dr
- 6.3 SS304 12gx75mm HexTek Screw 10mm Hex
- 6.4 SS304 8gx 16mm PH SD ST Screw
- 6.5 AS73 4-4 Truss Pop Rivet
- 6.6 M4x16mm CS SD Screw
- 6.7 SS304 8gx 20mm CS ST Screw

Aluminium Flashings:

- 7.0 Jamb Flashing-
- 7.1 AL 1.6mm Custom Folded
- 7.2 AL 1.8mm Custom Folded
- 7.3 AL 50X20X3mm Angle
- 7.4 AL 40X20X1.6mm Angle

Ext Cnr_SML Cladding Type

Detail Number

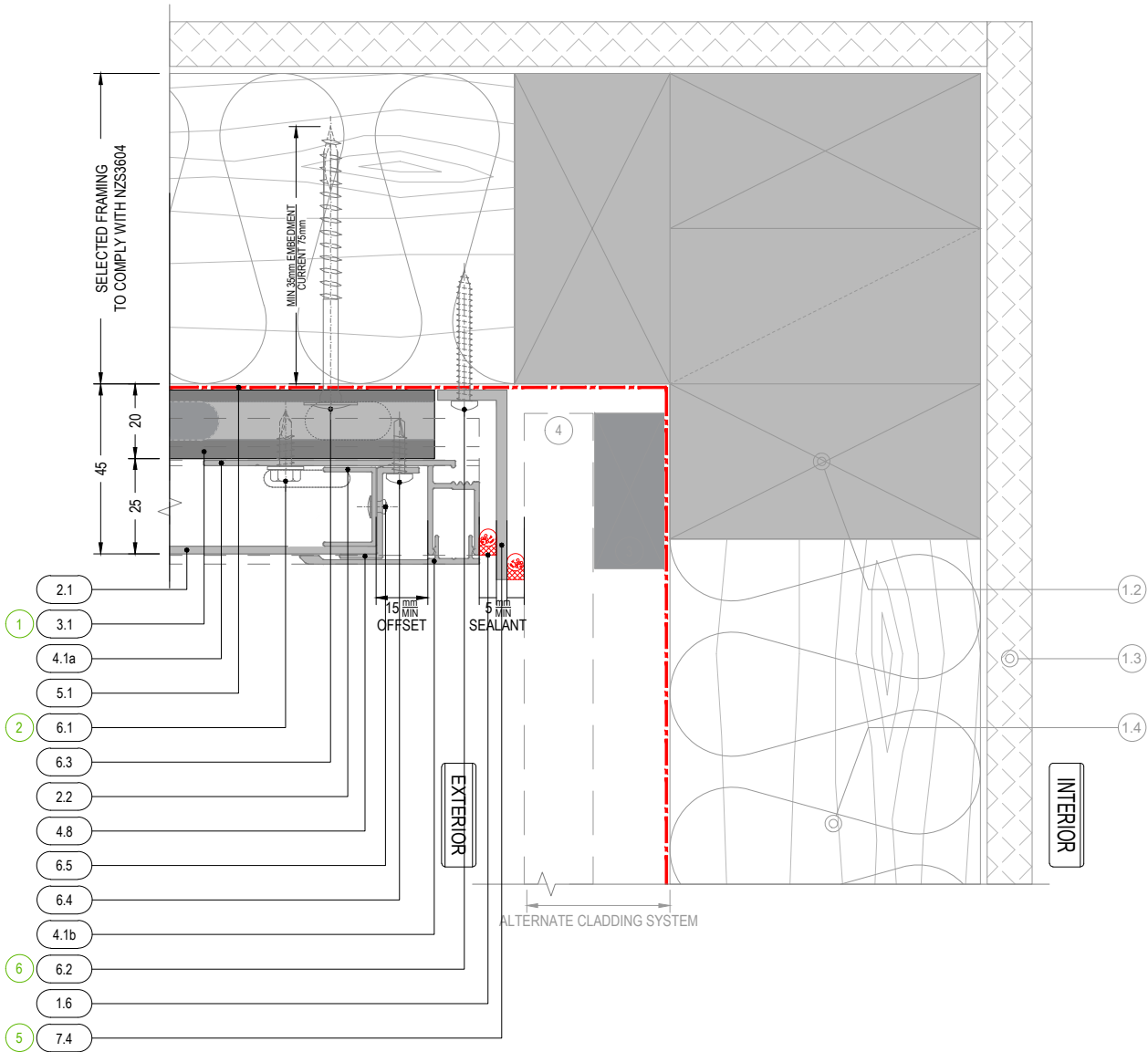
AC-V-AR-1.3

Version

SEP 2022 [v2.0]



MATERIALS • SYSTEMS • SOLUTIONS



NOTE
"2.3" and "4.8" can be pre-assembled with "6.5" according "AC-GP-1"

SEQUENCE OF INSTALLATION



Structure : By Others

- 1.1 Concrete
- 1.2 Timber
- 1.3 Internal Lining
- 1.4 Insulation
- 1.5 Window Joinery
- 1.6 Approved Sealant on PEF Rod to suit gap
- 1.7 Damp Proof Course/Membrane
- 1.8 WANZ Support Bar
- 1.9 Window Head Flashing

AliClad Cladding System

- 2.0 AliClad Elements :
- 2.1 AliClad Vertical Shiplap Weatherboard Cladding
- 2.2 AC-Starter - Std. MILL
- 2.3 AC-Clamp Channel - Std. MILL

3.0

- 3.1 AlphaRail20 -
- 3.1a AlphaClip -
- 3.1b AlphaClip3 -
- 3.1c AlphaClip5 -
- 3.1d AlphaClip10 -

4.0

- 4.1 J-Mould Base -
- 4.1b J-Mould Face -
- 4.2 Drained B.o.C. Base -
- 4.3a Internal Corner Base -
- 4.3b Internal Corner Face -
- 4.4a External Corner Base -
- 4.4b External Corner Base -
- 4.5a Vertical Jointer Base -
- 4.5b Vertical Jointer Face -
- 4.6 Jamb Clip -

Cladding Support Elements :

- 20mm AL. Cavity Battens
- AL. 1.6mm Packer
- AL. 3mm Packer
- AL. 5mm Packer
- AL. 10mm Packer

Two Piece Flashing & Junction Elements :

- PC on Request
- Std. Range PC
- PC on Request
- Std. Range PC
- Std. MILL
- Std. Range PC
- Std. MILL
- Std. Range PC
- Std. MILL
- Std. Range PC
- Std. MILL

4.7 Sill Clip Face - Flush Window -

- 4.8 BigZed -
- 4.9 Sill Clip Face - Punch Window -
- 4.10 Vermin Flashing -
- 4.11a Typ.1 Jamb Tray Right - For Windows With WANZ
- 4.11b Typ.1 Jamb Tray Left - For Windows With WANZ
- 4.12a Typ.2 Jamb Tray Right - For Windows Without WANZ
- 4.12b Typ.2 Jamb Tray Left - For Windows Without WANZ

Mechanical Windowsill Drainage Elements :

- 4.11a Typ.1 Jamb Tray Right - For Windows With WANZ
- 4.11b Typ.1 Jamb Tray Left - For Windows With WANZ
- 4.12a Typ.2 Jamb Tray Right - For Windows Without WANZ
- 4.12b Typ.2 Jamb Tray Left - For Windows Without WANZ

Auxiliary Cladding System Components

- 5.0 Suggested Membrane & Tapes :
- 5.1 E2/AS1 Table 23 Compliant Membrane system
- 5.2 Sill Tape -150mm
- 5.3 Fabric Flashing Tape - 60mm
- 5.4 Wet Seal Adhesion Tape
- 5.5 Closed Cell EPDM Tape

6.0

- Std. Range PC
- Std. MILL
- Std. Range PC
- PC on Request
- 6.4 SS304 8gx 16mm
- 6.5 AS73 4-4
- 6.6 M4x16mm
- 6.7 SS304 8gx 20mm

7.0

- 7.1 Jamb Flashing-
- 7.2 AL. 1.6mm Custom Folded
- 7.3 AL. 1.8mm Custom Folded
- 7.4 AL. 50X20X3mm Angle
- 7.5 AL. 40X20X1.6mm Angle

Fixings:

- 6.1 SS304 10gx20mm HexTek SD Screw 10mm Hex
- 6.2 SS304 8gx35mm PH SD Screw #2 Sq.Dr
- 6.3 SS304 12gx75mm HexTek Screw 10mm Hex
- 6.4 SS304 8gx 16mm PH SD ST Screw
- 6.5 AS73 4-4 Truss Pop Rivet
- 6.6 M4x16mm CS SD Screw
- 6.7 SS304 8gx 20mm CS ST Screw

Aluminium Flashings:

- Std. Range PC

Int Cnr_SML Cladding Type

Detail Number

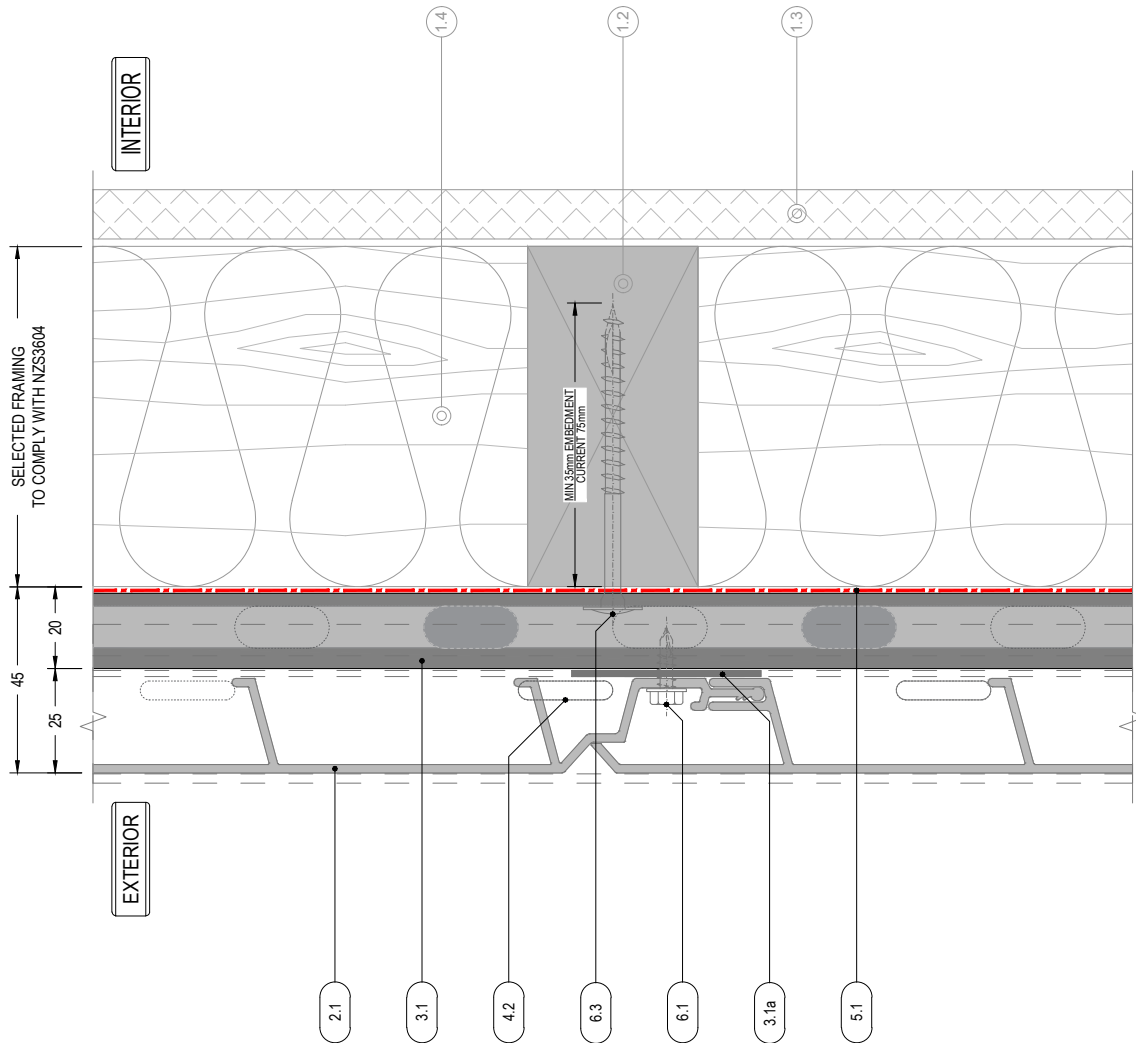
AC-V-AR-1.4

Version

SEP 2022 [v2.0]



MATERIALS • SYSTEMS • SOLUTIONS



NOTE
"4.2" is shown as a dashed line

Structure : By Others

- 1.1 Concrete
- 1.2 Timber
- 1.3 Internal Lining
- 1.4 Insulation
- 1.5 Window Joinery
- 1.6 Approved Sealant on PEF Rod to suit gap
- 1.7 Damp Proof Course/Membrane
- 1.8 WANZ Support Bar
- 1.9 Window Head Flashing

AliClad Cladding System

- 2.0 AliClad Elements:
- 2.1 AliClad Vertical Shiplap Weatherboard Cladding
- 2.2 AC-Starter - Std. MILL
- 2.3 AC-Clamp Channel - Std. MILL

- 3.0
- 3.1 AlphaRail20 -
- 3.1a AlphaClip -
- 3.1b AlphaClip3 -
- 3.1c AlphaClip5 -
- 3.1d AlphaClip10 -

Two Piece Flashing & Junction Elements :

- 4.0
- 4.1a J-Mould Base -
- 4.1b J-Mould Face -
- 4.2 Drained B.o.C. Base -
- 4.3a Internal Corner Base -
- 4.3b Internal Corner Face -
- 4.4a External Corner Base -
- 4.4b External Corner Base -
- 4.5a Vertical Jointer Base -
- 4.5b Vertical Jointer Face -
- 4.6 Jamb Clip -

Cladding Support Elements :

- 20mm AL. Cavity Battens
- AL. 1.6mm Packer
- AL. 3mm Packer
- AL. 5mm Packer
- AL. 10mm Packer

PC on Request

- Std. Range PC
- Std. MILL
- Std. Range PC
- Std. MILL
- Std. Range PC
- Std. MILL
- Std. Range PC
- Std. MILL

- 4.7 Sill Clip Face - Flush Window -
- 4.8 BigZed -
- 4.9 Sill Clip Face - Punch Window -
- 4.10 Vermin Flashing -

- 4.11a Typ.1 Jamb Tray Right - For Windows With WANZ
- 4.11b Typ.1 Jamb Tray Left - For Windows With WANZ
- 4.12a Typ.2 Jamb Tray Right - For Windows Without WANZ
- 4.12b Typ.2 Jamb Tray Left - For Windows Without WANZ

Auxiliary Cladding System Components

- 5.0
- 5.1 E2/AS1 Table 23 Compliant Membrane system
- 5.2 Sill Tape -150mm
- 5.3 Fabric Flashing Tape - 60mm
- 5.4 Wet Seal Adhesion Tape
- 5.5 Closed Cell EPDM Tape

Std. Range PC

- Std. MILL
- Std. Range PC
- PC on Request

Suggested Membrane & Tapes :

- 7.1 Jamb Flashing-
- 7.2 AL. 1.6mm Custom Folded
- 7.3 AL. 1.8mm Custom Folded
- 7.4 AL. 50X20X3mm Angle
- 7.5 AL. 40X20X1.6mm Angle

6.0

- 6.1 SS304 10gx20mm
- 6.2 SS304 8gx35mm
- 6.3 SS304 12gx75mm
- 6.4 SS304 8gx 16mm
- 6.5 AS73 4-4
- 6.6 M4x16mm
- 6.7 SS304 8gx 20mm

Fixings:

- HexTek SD Screw 10mm Hex
- PH SD Screw #2 Sq.Dr
- HexTek Screw 10mm Hex
- PH SD ST Screw
- Truss Pop Rivet
- CS SD Screw
- CS ST Screw

Aluminium Flashings:

- Std. Range PC

Detail Number

AC-V-AR-2.1

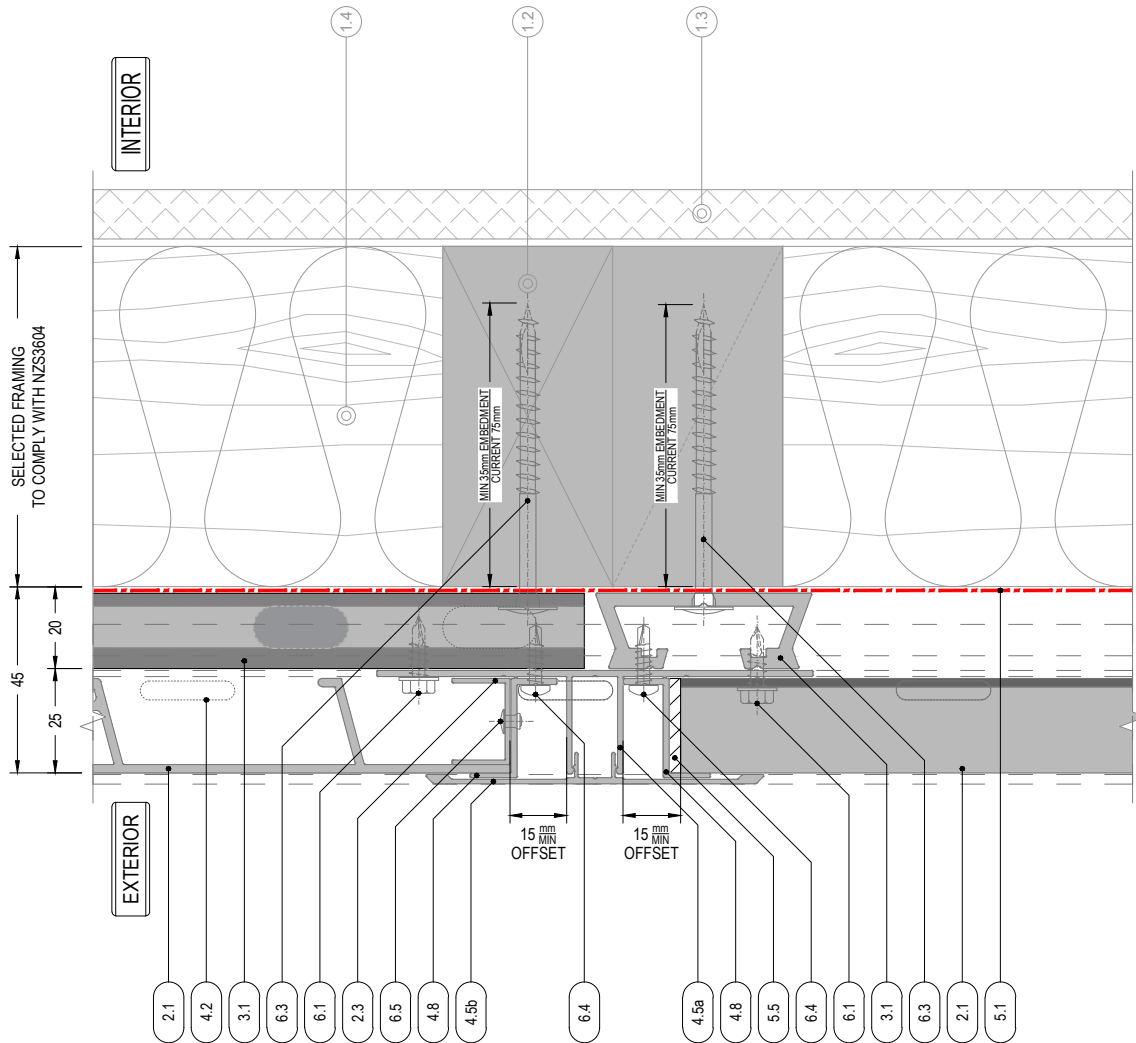
Version

SEP 2022 [v2.0]

Vertical Joint - Typical



MATERIALS • SYSTEMS • SOLUTIONS



NOTE
 "2.3" and "4.8" can be pre-assembled with "6.5" according "AC-GP-1"
 Jack stud is required at junction of cladding types to ensure adequate fixing area
 "4.2" is shown as a dashed line

Structure : By Others

- 1.1 Concrete
- 1.2 Timber
- 1.3 Internal Lining
- 1.4 Insulation
- 1.5 Window Joinery
- 1.6 Approved Sealant on PEF Rod to suit gap
- 1.7 Damp Proof Course/Membrane
- 1.8 WANZ Support Bar
- 1.9 Window Head Flashing

AlClad Cladding System

- 2.0 AlClad Elements :
- 2.1 AlClad Vertical Shiplap Weatherboard Cladding
- 2.2 AC-Starter - Std. MILL
- 2.3 AC-Clamp Channel - Std. MILL

3.0

- 3.1 AlphaRail20 -
- 3.1a AlphaClip -
- 3.1b AlphaClip3 -
- 3.1c AlphaClip5 -
- 3.1d AlphaClip10 -

4.0

- 4.1a J-Mould Base -
- 4.1b J-Mould Face -
- 4.2 Drained B.o.C. Base -
- 4.3a Internal Corner Base -
- 4.3b Internal Corner Face -
- 4.4a External Corner Base -
- 4.4b External Corner Base -
- 4.5a Vertical Jointer Base -
- 4.5b Vertical Jointer Face -
- 4.6 Jamb Clip -

Cladding Support Elements :

- 20mm AL. Cavity Battens
- AL. 1.6mm Packer
- AL. 3mm Packer
- AL. 5mm Packer
- AL. 10mm Packer

Two Piece Flashing & Junction Elements :

- PC on Request
- Std. Range PC
- PC on Request
- Std. Range PC
- Std. MILL
- PC on Request
- Std. Range PC
- Std. MILL
- PC on Request
- Std. Range PC
- Std. MILL
- PC on Request
- Std. Range PC
- Std. MILL

4.7 Sill Clip Face - Flush Window -

- 4.8 BigZed -
- 4.9 Sill Clip Face - Punch Window -
- 4.10 Vermin Flashing -

Mechanical Windowsill Drainage Elements :

- 4.11a Typ.1 Jamb Tray Right - For Windows With WANZ
- 4.11b Typ.1 Jamb Tray Left - For Windows With WANZ
- 4.12a Typ.2 Jamb Tray Right - For Windows Without WANZ
- 4.12b Typ.2 Jamb Tray Left - For Windows Without WANZ

Auxiliary Cladding System Components

- 5.0
- 5.1 E2/AS1 Table 23 Compliant Membrane system
- 5.2 Sill Tape -150mm
- 5.3 Fabric Flashing Tape - 60mm
- 5.4 Wet Seal Adhesion Tape
- 5.5 Closed Cell EPDM Tape

6.0

- Std. Range PC
- Std. MILL
- 6.1 SS304 10gx20mm
- 6.2 SS304 8gx35mm
- 6.3 SS304 12gx75mm
- 6.4 SS304 8gx 16mm
- 6.5 AS73 4-4
- 6.6 M4x16mm
- 6.7 SS304 8gx 20mm

7.0

- 7.1 Jamb Flashing-
- 7.2 AL. 1.6mm Custom Folded
- 7.3 AL. 1.8mm Custom Folded
- 7.4 AL. 50X20X3mm Angle
- 7.5 AL. 40X20X1.6mm Angle

Fixings:

- HexTek SD Screw 10mm Hex
- PH SD Screw #2 Sq.Dr
- HexTek Screw 10mm Hex
- PH SD ST Screw
- Truss Pop Rivet
- CS SD Screw
- CS ST Screw

Aluminium Flashings:

- Std. Range PC

Detail Number

AC-V-AR-2.2

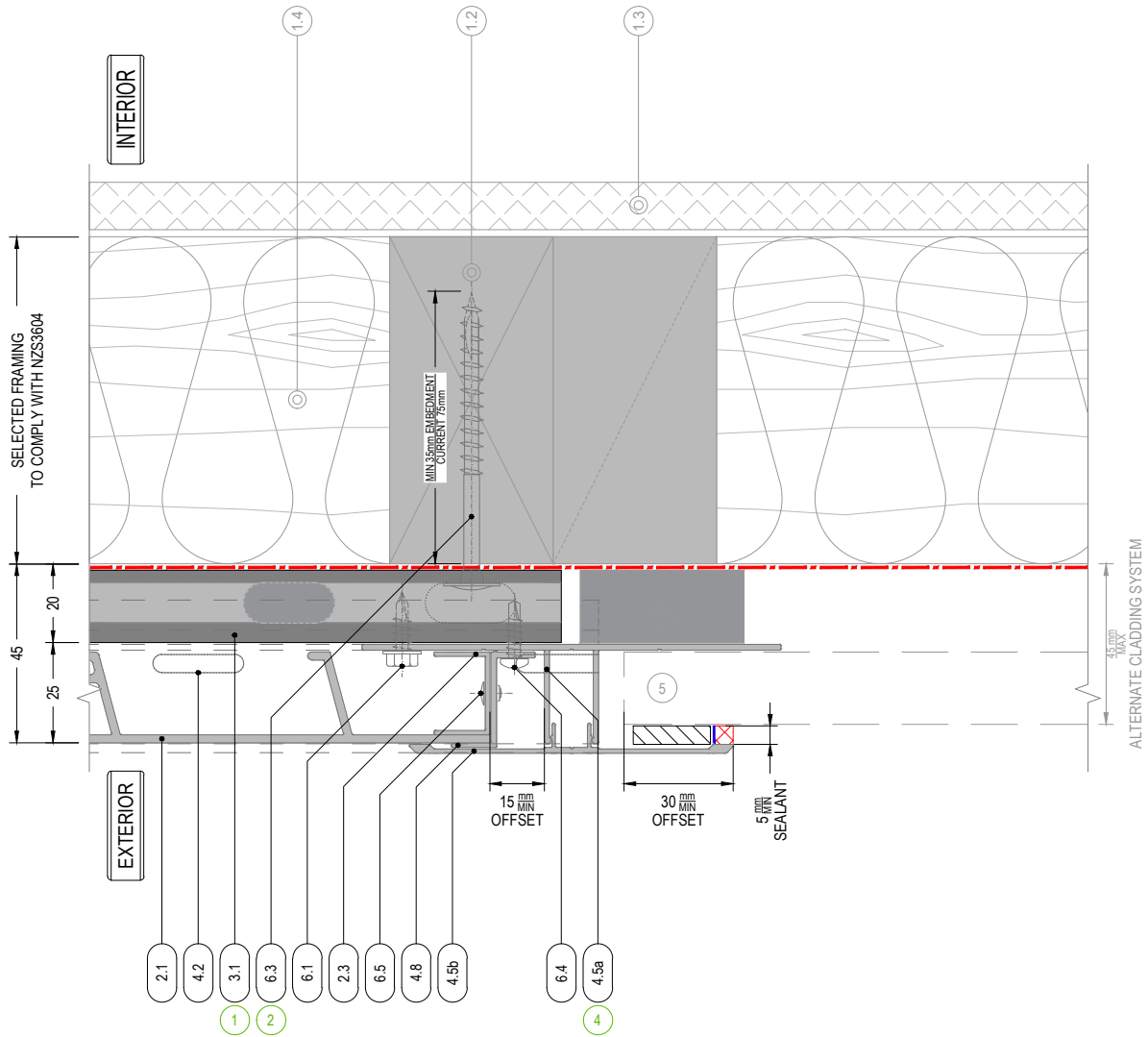
Version

SEP 2022 [v2.0]

Vert. Joint_Orientation Change



MATERIALS • SYSTEMS • SOLUTIONS



NOTE
 "2.3" and "4.8" can be pre-assembled with "6.5" according "AC-GP-1"
 Jack stud is required at junction of cladding types to ensure adequate fixing area
 "4.2" is shown as a dashed line

SEQUENCE OF INSTALLATION
 1 3.1 2 6.3 3 Alternate Support Structure 4 4.5a 5 Alternate Cladding Exterior

Structure : By Others

- 1.1 Concrete
- 1.2 Timber
- 1.3 Internal Lining
- 1.4 Insulation
- 1.5 Window Joinery
- 1.6 Approved Sealant on PEF Rod to suit gap
- 1.7 Damp Proof Course/Membrane
- 1.8 WANZ Support Bar
- 1.9 Window Head Flashing

AlClad Cladding System

- 2.0 AlClad Elements :
- 2.1 AlClad Vertical Shiplap Weatherboard Cladding
- 2.2 AC-Starter - Std. MILL
- 2.3 AC-Clamp Channel - Std. MILL

3.0

- 3.1 AlphaRail20 -
- 3.1a AlphaClip -
- 3.1b AlphaClip3 -
- 3.1c AlphaClip5 -
- 3.1d AlphaClip10 -

4.0

- 4.1a J-Mould Base -
- 4.1b J-Mould Face -
- 4.2 Drained B.o.C. Base -
- 4.3a Internal Corner Base -
- 4.3b Internal Corner Face -
- 4.4a External Corner Base -
- 4.4b External Corner Face -
- 4.5a Vertical Jointer Base -
- 4.5b Vertical Jointer Face -
- 4.6 Jamb Clip -

Cladding Support Elements :

- 20mm AL. Cavity Battens
- AL. 1.6mm Packer
- AL. 3mm Packer
- AL. 5mm Packer
- AL. 10mm Packer

Two Piece Flashing & Junction Elements :

- PC on Request
- Std. Range PC
- PC on Request
- Std. Range PC
- Std. MILL
- PC on Request
- Std. Range PC
- Std. MILL
- PC on Request
- Std. Range PC
- Std. MILL
- PC on Request
- Std. Range PC
- Std. MILL

4.7 Sill Clip Face - Flush Window -

- 4.8 BigZed -
- 4.9 Sill Clip Face - Punch Window -
- 4.10 Vermin Flashing -
- 4.11a Typ.1 Jamb Tray Right - For Windows With WANZ
- 4.11b Typ.1 Jamb Tray Left - For Windows With WANZ
- 4.12a Typ.2 Jamb Tray Right - For Windows Without WANZ
- 4.12b Typ.2 Jamb Tray Left - For Windows Without WANZ

Auxiliary Cladding System Components

- 5.0
- 5.1 E2/AS1 Table 23 Compliant Membrane system
- 5.2 Sill Tape -150mm
- 5.3 Fabric Flashing Tape - 60mm
- 5.4 Wet Seal Adhesion Tape
- 5.5 Closed Cell EPDM Tape

Std. Range PC

- Std. MILL
- Std. Range PC
- PC on Request

Mechanical Windowsill Drainage Elements :

- 6.0
- 6.1 SS304 10gx20mm
- 6.2 SS304 8gx35mm
- 6.3 SS304 12gx75mm
- 6.4 SS304 8gx 16mm
- 6.5 AS73 4-4
- 6.6 M4x16mm
- 6.7 SS304 8gx 20mm

Suggested Membrane & Tapes :

- 7.0
- 7.1 Jamb Flashing-
- 7.2 AL. 1.6mm Custom Folded
- 7.3 AL. 1.8mm Custom Folded
- 7.4 AL. 50X20X3mm Angle
- 7.5 AL. 40X20X1.6mm Angle

Fixings:

- HexTek SD Screw 10mm Hex
- PH SD Screw #2 Sq.Dr
- HexTek Screw 10mm Hex
- PH SD ST Screw
- Truss Pop Rivet
- CS SD Screw
- CS ST Screw

Aluminium Flashings:

- Std. Range PC

Detail Number

AC-V-AR-2.3

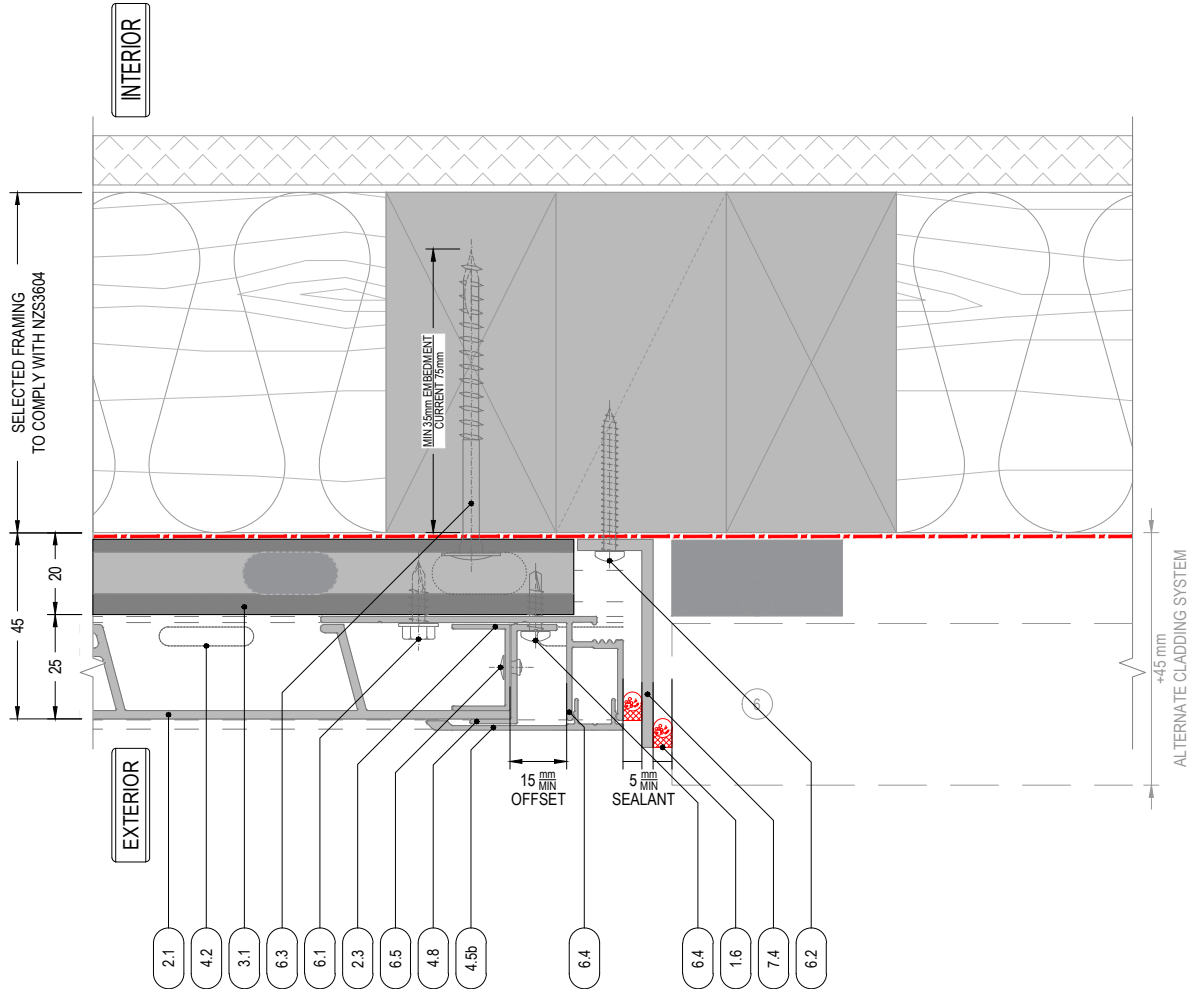
Version

SEP 2022 [v2.0]

Vert. Joint_SML Cladding Type



MATERIALS • SYSTEMS • SOLUTIONS



NOTE
 "2.3" and "4.8" can be pre-assembled with "6.5" according "AC-GP-1"
 Jack stud is required at junction of cladding types to ensure adequate fixing area
 "4.2" is shown as a dashed line

SEQUENCE OF INSTALLATION



Structure : By Others

- 1.1 Concrete
- 1.2 Timber
- 1.3 Internal Lining
- 1.4 Insulation
- 1.5 Window Joinery
- 1.6 Approved Sealant on PEF Rod to suit gap
- 1.7 Damp Proof Course/Membrane
- 1.8 WANZ Support Bar
- 1.9 Window Head Flashing

AlClad Cladding System

- 2.0 AlClad Elements :
- 2.1 AlClad Vertical Shiplap Weatherboard Cladding
- 2.2 AC-Starter - Std. MILL
- 2.3 AC-Clamp Channel - Std. MILL

- 3.0 AlphaRail20 -
- 3.1a AlphaClip -
- 3.1b AlphaClip3 -
- 3.1c AlphaClip5 -
- 3.1d AlphaClip10 -

Two Piece Flashing & Junction Elements :

- 4.0 J-Mould Base -
- 4.1 J-Mould Face -
- 4.2 Drained B.o.C. Base -
- 4.3a Internal Corner Base -
- 4.3b Internal Corner Face -
- 4.4a External Corner Base -
- 4.4b External Corner Face -
- 4.5a Vertical Jointer Base -
- 4.5b Vertical Jointer Face -
- 4.6 Jamb Clip -

Cladding Support Elements :

- 20mm AL. Cavity Battens
- AL. 1.6mm Packer
- AL. 3mm Packer
- AL. 5mm Packer
- AL. 10mm Packer

PC on Request

- Std. Range PC
- PC on Request
- Std. MILL
- Std. Range PC
- Std. MILL
- Std. Range PC
- Std. MILL
- Std. Range PC
- Std. MILL

Sill Clip Face - Flush Window -

- 4.7 Sill Clip Face - Flush Window - Std. Range PC
- 4.8 BigZed - Std. MILL
- 4.9 Sill Clip Face - Punch Window - Std. Range PC
- 4.10 Vermin Flashing - PC on Request

Mechanical Windowsill Drainage Elements :

- 4.11a Typ.1 Jamb Tray Right - For Windows With WANZ
- 4.11b Typ.1 Jamb Tray Left - For Windows With WANZ
- 4.12a Typ.2 Jamb Tray Right - For Windows Without WANZ
- 4.12b Typ.2 Jamb Tray Left - For Windows Without WANZ

Auxiliary Cladding System Components

- 5.0 Suggested Membrane & Tapes :
- 5.1 E2/AS1 Table 23 Compliant Membrane system
- 5.2 Sill Tape -150mm
- 5.3 Fabric Flashing Tape - 60mm
- 5.4 Wet Seal Adhesion Tape
- 5.5 Closed Cell EPDM Tape

Fixings:

- 6.0 HexTek SD Screw 10mm Hex
- 6.1 SS304 10gx20mm
- 6.2 SS304 8gx35mm
- 6.3 SS304 12gx75mm
- 6.4 SS304 8gx 16mm
- 6.5 AS73 4-4
- 6.6 M4x16mm
- 6.7 SS304 8gx 20mm

Aluminium Flashings:

- 7.0 Std. Range PC
- 7.1 Jamb Flashing-
- 7.2 AL. 1.6mm Custom Folded
- 7.3 AL. 1.8mm Custom Folded
- 7.4 AL. 50X20X3mm Angle
- 7.5 AL. 40X20X1.6mm Angle

Vert. Joint_LRG Cladding Type

Detail Number

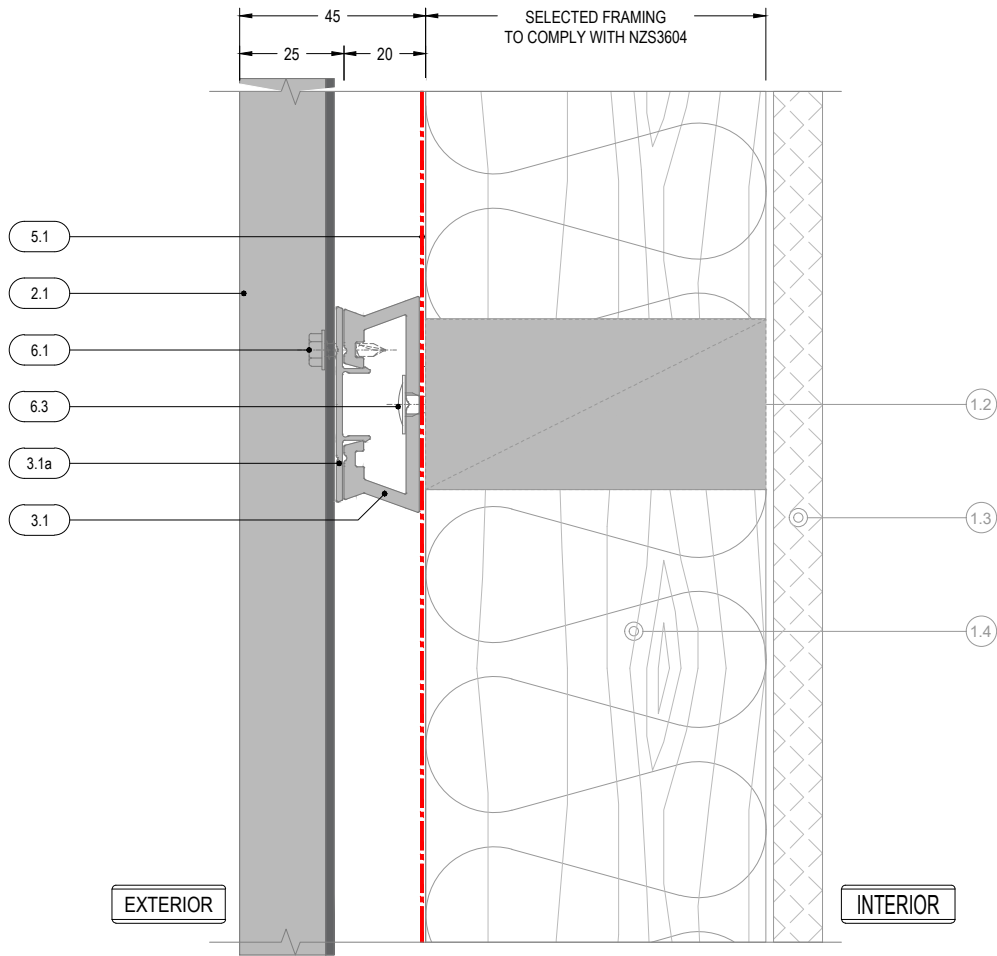
AC-V-AR-2.4

Version

SEP 2022 [v2.0]



MATERIALS • SYSTEMS • SOLUTIONS



Structure : By Others		3.0	Cladding Support Elements :	4.7	Sill Clip Face - Flush Window -	Std. Range PC	6.0	Fixings:	
1.1 Concrete		3.1 AlphaRail20 -	20mm AL. Cavity Battens	4.8	BigZed -	Std. MILL	6.1 SS304 10gx20mm	HexTek SD Screw 10mm Hex	
1.2 Timber		3.1a AlphaClip -	AL. 1.6mm Packer	4.9	Sill Clip Face - Punch Window -	Std. Range PC	6.2 SS304 8gx35mm	PH SD Screw #2 Sq.Dr	
1.3 Internal Lining		3.1b AlphaClip3 -	AL. 3mm Packer	4.10	VermIn Flashing -	PC on Request	6.3 SS304 12gx75mm	HexTek Screw 10mm Hex	
1.4 Insulation		3.1c AlphaClip5 -	AL. 5mm Packer	Mechanical Windowsill Drainage Elements :				6.4 SS304 8gx 16mm	PH SD ST Screw
1.5 Window Joinery		3.1d AlphaClip10 -	AL. 10mm Packer	4.11a	Typ.1 Jamb Tray Right -	For Windows With WANZ	6.5 AS73 4-4	Truss Pop Rivet	
1.6 Approved Sealant on PEF Rod to suit gap				4.11b	Typ.1 Jamb Tray Left -	For Windows With WANZ	6.6 M4x16mm	CS SD Screw	
1.7 Damp Proof Course/Membrane		4.0	Two Piece Flashing & Junction Elements :	4.12a	Typ.2 Jamb Tray Right -	For Windows Without WANZ	6.7 SS304 8gx 20mm	CS ST Screw	
1.8 WANZ Support Bar		4.1a J-Mould Base -	PC on Request	4.12b	Typ.2 Jamb Tray Left -	For Windows Without WANZ			
1.9 Window Head Flashing		4.1b J-Mould Face -	Std. Range PC	Auxiliary Cladding System Components				7.0	Aluminium Flashings:
		4.2 Drained B.o.C. Base -	PC on Request	5.0			7.1	Jamb Flashing-	
		4.3a Internal Corner Base -	Std. MILL	5.1	E2/AS1 Table 23 Compliant Membrane system		7.2	AL. 1.6mm Custom Folded	
		4.3b Internal Corner Face -	Std. Range PC	5.2	Sill Tape -150mm		7.3	AL. 1.8mm Custom Folded	
		4.4a External Corner Base -	Std. MILL	5.3	Fabric Flashing Tape - 60mm		7.4	AL. 50X20X3mm Angle	
		4.4b External Corner Face -	Std. Range PC	5.4	Wet Seal Adhesion Tape		7.5	AL. 40X20X1.6mm Angle	
		4.5a Vertical Jointer Base -	Std. MILL	5.5	Closed Cell EPDM Tape				
2.0	AliClad Elements :	4.6	Jamb Clip -						
2.1	AliClad Vertical Shiplap Weatherboard Cladding								
2.2	AC-Starter -								
2.3	AC-Clamp Channel -								

Hori. Joint_Typical

Detail Number

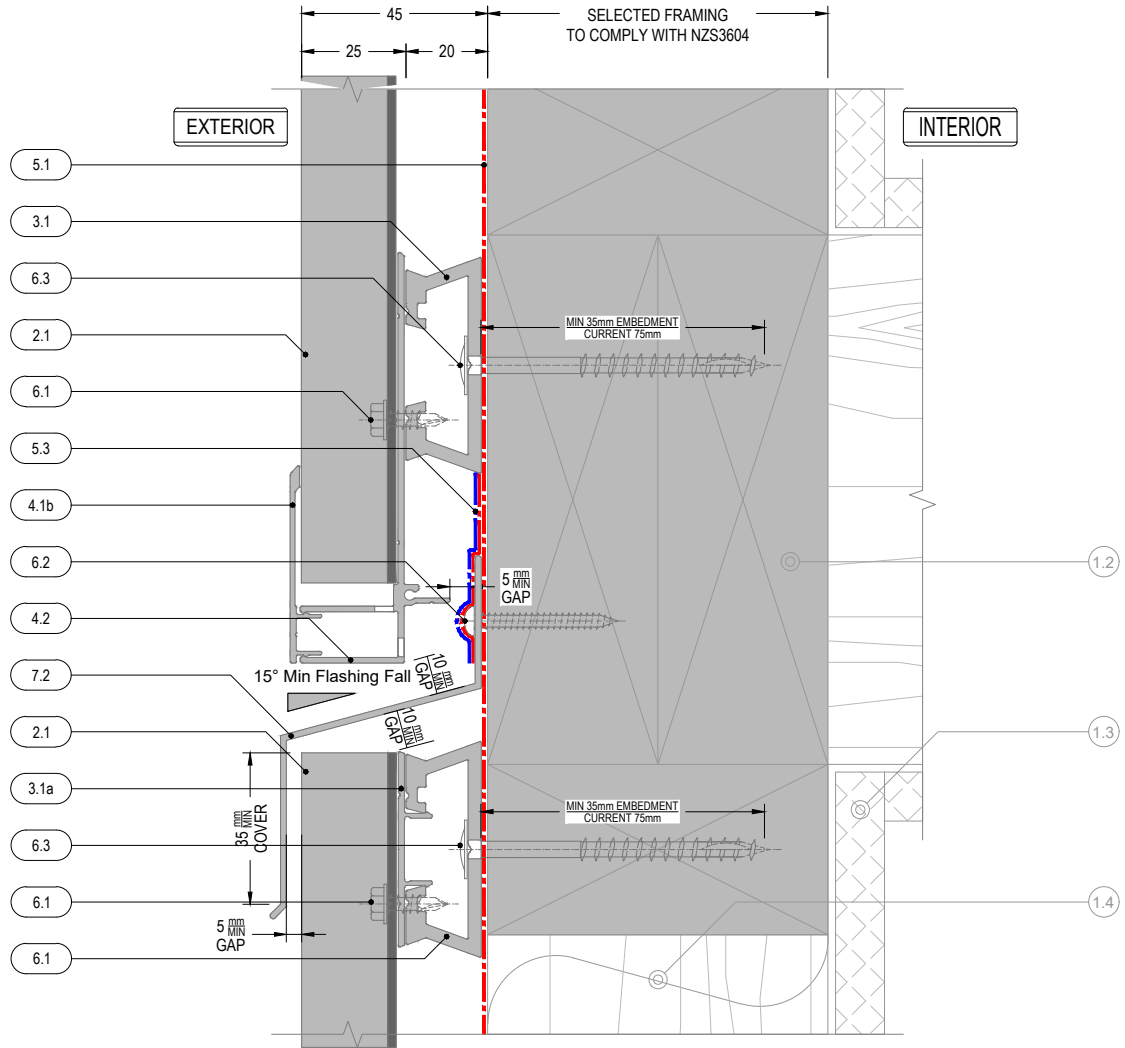
AC-V-AR-3.1

Version

SEP 2022 [v2.0]



MATERIALS • SYSTEMS • SOLUTIONS

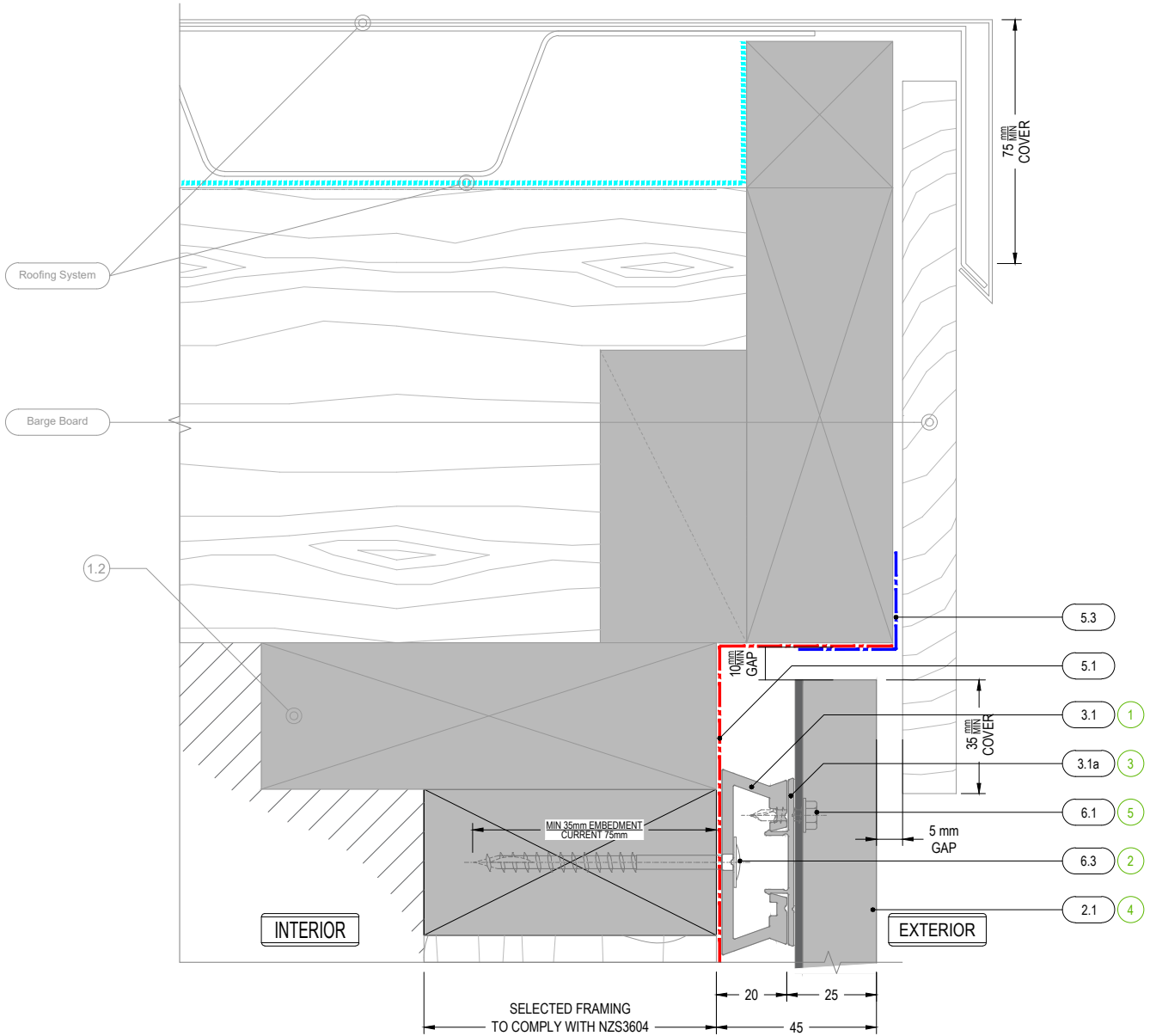


Structure : By Others		3.0	Cladding Support Elements :	4.7	Sill Clip Face - Flush Window -	Std. Range PC	6.0	Fixings:		
1.1	Concrete	3.1	20mm AL. Cavity Battens	4.8	BigZed -	Std. MILL	6.1	SS304 10gx20mm HexTek SD Screw 10mm Hex		
1.2	Timber	3.1a	AL. 1.6mm Packer	4.9	Sill Clip Face - Punch Window -	Std. Range PC	6.2	SS304 8gx35mm PH SD Screw #2 Sq.Dr		
1.3	Internal Lining	3.1b	AL. 3mm Packer	4.10	VermIn Flashing -	PC on Request	6.3	SS304 12gx75mm HexTek Screw 10mm Hex		
1.4	Insulation	3.1c	AL. 5mm Packer	Mechanical Windowsill Drainage Elements :				6.4	SS304 8gx 16mm PH SD ST Screw	
1.5	Window Joinery	3.1d	AL. 10mm Packer	4.11a	Typ.1 Jamb Tray Right -	For Windows With WANZ	6.5	AS73 4-4 Truss Pop Rivet		
1.6	Approved Sealant on PEF Rod to suit gap	Two Piece Flashing & Junction Elements :		4.11b	Typ.1 Jamb Tray Left -	For Windows With WANZ	6.6	M4x16mm CS SD Screw		
1.7	Damp Proof Course/Membrane	4.0	PC on Request	4.12a	Typ.2 Jamb Tray Right -	For Windows Without WANZ	6.7	SS304 8gx 20mm CS ST Screw		
1.8	WANZ Support Bar	4.1a	J-Mould Base -	4.12b	Typ.2 Jamb Tray Left -	For Windows Without WANZ	Aluminium Flashings:			
1.9	Window Head Flashing	4.1b	J-Mould Face -	Auxiliary Cladding System Components				7.0	Jamb Flashing-	
AliClad Cladding System		4.2	Drained B.o.C. Base -	5.0	Suggested Membrane & Tapes :				7.1	AL. 1.6mm Custom Folded
2.0	AliClad Elements :	4.3a	Internal Corner Base -	5.1	E2/AS1 Table 23 Compliant Membrane system				7.2	AL. 1.8mm Custom Folded
2.1	AliClad Vertical Shiplap Weatherboard Cladding	4.3b	Internal Corner Face -	5.2	Sill Tape -150mm				7.3	AL. 50X20X3mm Angle
2.2	AC-Starter -	4.3c	Internal Corner Face -	5.3	Fabric Flashing Tape - 60mm				7.4	AL. 40X20X1.6mm Angle
2.3	AC-Clamp Channel -	4.4a	External Corner Base -	5.4	Wet Seal Adhesion Tape				7.5	AL. 40X20X1.6mm Angle
		4.4b	External Corner Base -	5.5	Closed Cell EPDM Tape					
		4.5a	Vertical Jointer Base -							
		4.5b	Vertical Jointer Face -							
		4.6	Jamb Clip -							

Interstorey Joint

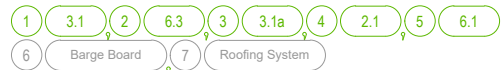
Detail Number
AC-V-AR-3.2

Version
SEP 2022 [v2.0]



NOTE
Jack stud is required at junction of cladding types to ensure adequate fixing area
"4.2" is shown as a dashed line

SEQUENCE OF INSTALLATION



Structure : By Others

- 1.1 Concrete
- 1.2 Timber
- 1.3 Internal Lining
- 1.4 Insulation
- 1.5 Window Joinery
- 1.6 Approved Sealant on PEF Rod to suit gap
- 1.7 Damp Proof Course/Membrane
- 1.8 WANZ Support Bar
- 1.9 Window Head Flashing

AlClad Cladding System

- 2.0 AlClad Elements :
- 2.1 AlClad Vertical Shiplap Weatherboard Cladding
- 2.2 AC-Starter -
- 2.3 AC-Clamp Channel -

3.0

- 3.1 AlphaRail20 -
- 3.1a AlphaClip -
- 3.1b AlphaClip3 -
- 3.1c AlphaClip5 -
- 3.1d AlphaClip10 -

4.0

- 4.1a J-Mould Base -
- 4.1b J-Mould Face -
- 4.2 Drained B.o.C. Base -
- 4.3a Internal Corner Base -
- 4.3b Internal Corner Face -
- 4.4a External Corner Base -
- 4.4b External Corner Base -
- 4.5a Vertical Jointer Base -
- 4.5b Vertical Jointer Face -
- 4.6 Jamb Clip -

Cladding Support Elements :

- 20mm AL. Cavity Battens
- AL. 1.6mm Packer
- AL. 3mm Packer
- AL. 5mm Packer
- AL. 10mm Packer

Two Piece Flashing & Junction Elements :

- PC on Request
- Std. Range PC
- Std. MILL
- Std. Range PC
- Std. MILL
- Std. Range PC
- Std. MILL
- Std. Range PC
- Std. MILL
- Std. Range PC
- Std. MILL

4.7 Sill Clip Face - Flush Window -

- 4.8 BigZed -
- 4.9 Sill Clip Face - Punch Window -
- 4.10 Vermin Flashing -

Mechanical Windowsill Drainage Elements :

- 4.11a Typ.1 Jamb Tray Right - For Windows With WANZ
- 4.11b Typ.1 Jamb Tray Left - For Windows With WANZ
- 4.12a Typ.2 Jamb Tray Right - For Windows Without WANZ
- 4.12b Typ.2 Jamb Tray Left - For Windows Without WANZ

Auxiliary Cladding System Components

- 5.0
- 5.1 E2/AS1 Table 23 Compliant Membrane system
- 5.2 Sill Tape -150mm
- 5.3 Fabric Flashing Tape - 60mm
- 5.4 Wet Seal Adhesion Tape
- 5.5 Closed Cell EPDM Tape

Std. Range PC

- 6.0
- Std. MILL
- 6.1 SS304 10gx20mm
- 6.2 SS304 8gx35mm
- 6.3 SS304 12gx75mm
- 6.4 SS304 8gx 16mm
- 6.5 AS73 4-4
- 6.6 M4x16mm
- 6.7 SS304 8gx 20mm

7.0

- 7.1 Jamb Flashing-
- 7.2 AL. 1.6mm Custom Folded
- 7.3 AL. 1.8mm Custom Folded
- 7.4 AL. 50X20X3mm Angle
- 7.5 AL. 40X20X1.6mm Angle

Fixings:

- 6.1 HexTek SD Screw 10mm Hex
- PH SD Screw #2 Sq.Dr
- HexTek Screw 10mm Hex
- PH SD ST Screw
- Truss Pop Rivet
- CS SD Screw
- CS ST Screw

Aluminium Flashings:

- Std. Range PC

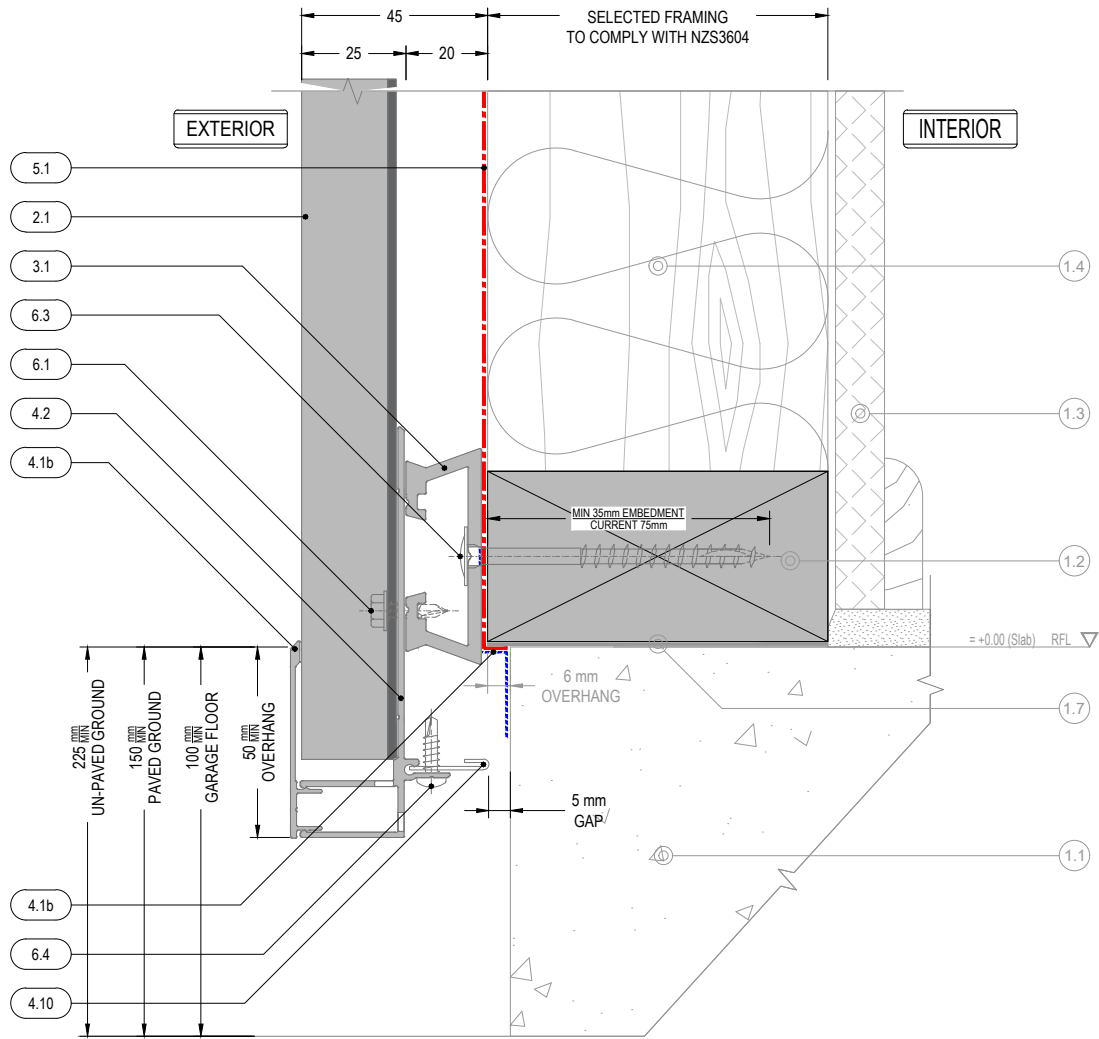
Detail Number

AC-V-AR-4.1

Version

SEP 2022 [v2.0]

TOP Cladding_Parapet



Structure : By Others		3.0	Cladding Support Elements :	4.7	Sill Clip Face - Flush Window -	Std. Range PC	6.0	Fixings:	
1.1	Concrete	3.1	20mm AL Cavity Battens	4.8	BigZed -	Std. MILL	6.1	SS304 10gx20mm HexTek SD Screw 10mm Hex	
1.2	Timber	3.1a	AL 1.6mm Packer	4.9	Sill Clip Face - Punch Window -	Std. Range PC	6.2	SS304 8gx35mm PH SD Screw #2 Sq.Dr	
1.3	Internal Lining	3.1b	AL 3mm Packer	4.10	VermIn Flashing -	PC on Request	6.3	SS304 12gx75mm HexTek Screw 10mm Hex	
1.4	Insulation	3.1c	AL 5mm Packer	Mechanical Windowsill Drainage Elements :				6.4	SS304 8gx 16mm PH SD ST Screw
1.5	Window Joinery	3.1d	AL 10mm Packer	4.11a	Typ.1 Jamb Tray Right -	For Windows With WANZ	6.5	AS73 4-4 Truss Pop Rivet	
1.6	Approved Sealant on PEF Rod to suit gap	Two Piece Flashing & Junction Elements :		4.11b	Typ.1 Jamb Tray Left -	For Windows With WANZ	6.6	M4x16mm CS SD Screw	
1.7	Damp Proof Course/Membrane	4.0	PC on Request	4.12a	Typ.2 Jamb Tray Right -	For Windows Without WANZ	6.7	SS304 8gx 20mm CS ST Screw	
1.8	WANZ Support Bar	4.1a	J-Mould Base -	4.12b	Typ.2 Jamb Tray Left -	For Windows Without WANZ	Aluminium Flashings:		
1.9	Window Head Flashing	4.1b	J-Mould Face -	Auxiliary Cladding System Components				7.0	Std. Range PC
AliClad Cladding System		4.2	Drained B.o.C. Base -	5.0	Suggested Membrane & Tapes :				
2.0	AliClad Elements :	4.3a	Internal Corner Base -	5.1	E2/AS1 Table 23 Compliant Membrane system				
2.1	AliClad Vertical Shiplap Weatherboard Cladding	4.3b	Internal Corner Face -	5.2	Sill Tape -150mm				
2.2	AC-Starter -	4.3c	Internal Corner Face -	5.3	Fabric Flashing Tape - 60mm				
2.3	AC-Clamp Channel -	4.4a	External Corner Base -	5.4	Wet Seal Adhesion Tape				
		4.4b	External Corner Base -	5.5	Closed Cell EPDM Tape				
		4.5a	Vertical Jointer Base -						
		4.5b	Vertical Jointer Face -						
		4.6	Jamb Clip -						

BTM Cladding_G.L

Detail Number

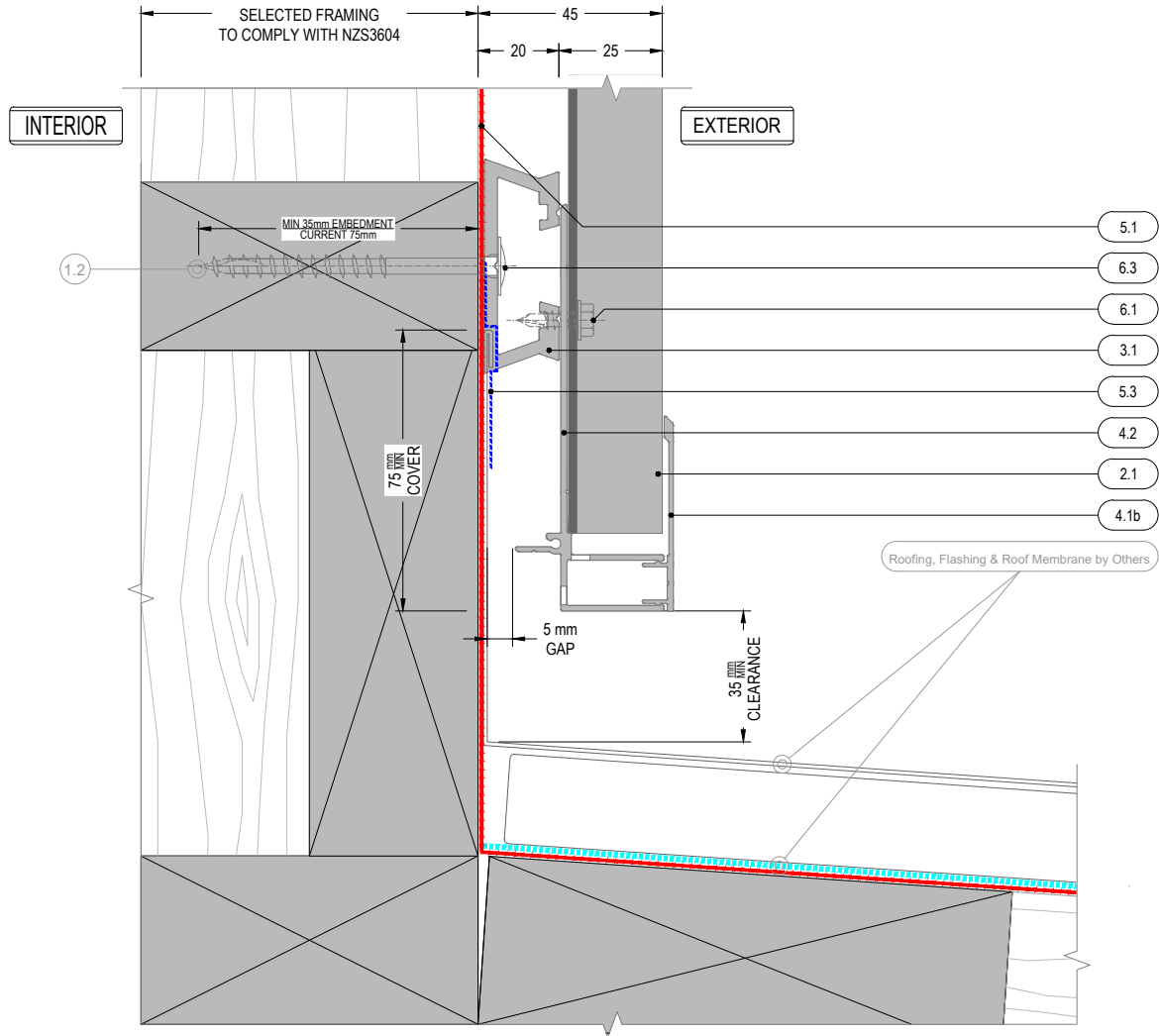
AC-V-AR-4.2

Version

SEP 2022 [v2.0]



MATERIALS • SYSTEMS • SOLUTIONS



NOTE
Weathering membrane under soffit is not requirement but is recommendable for air barrier performance when a rigid wind barrier is not in use.

Structure : By Others		3.0	Cladding Support Elements :	4.7 Sill Clip Face - Flush Window -	Std. Range PC	6.0	Fixings:	
1.1 Concrete	3.1 AlphaRail20 -	20mm AL Cavity Battens	4.8 BigZed -	Std. Range PC	Std. MILL	6.1 SS304 10gx20mm	HexTek SD Screw 10mm Hex	
1.2 Timber	3.1a AlphaClip -	AL 1.6mm Packer	4.9 Sill Clip Face - Punch Window -	Std. Range PC	6.2 SS304 8gx35mm	PH SD Screw #2 Sq.Dr		
1.3 Internal Lining	3.1b AlphaClip3 -	AL 3mm Packer	4.10 Vermin Flashing -	PC on Request	6.3 SS304 12gx75mm	HexTek Screw 10mm Hex		
1.4 Insulation	3.1c AlphaClip5 -	AL 5mm Packer	Mechanical Windowsill Drainage Elements :				6.4 SS304 8gx 16mm	PH SD ST Screw
1.5 Window Joinery	3.1d AlphaClip10 -	AL 10mm Packer	4.11a Typ.1 Jamb Tray Right -	For Windows With WANZ	6.5 AS73 4-4	Truss Pop Rivet		
1.6 Approved Sealant on PEF Rod to suit gap			4.11b Typ.1 Jamb Tray Left -	For Windows With WANZ	6.6 M4x16mm	CS SD Screw		
1.7 Damp Proof Course/Membrane	4.0	Two Piece Flashing & Junction Elements :	4.12a Typ.2 Jamb Tray Right -	For Windows Without WANZ	6.7 SS304 8gx 20mm	CS ST Screw		
1.8 WANZ Support Bar	4.1a J-Mould Base -	PC on Request	4.12b Typ.2 Jamb Tray Left -	For Windows Without WANZ				
1.9 Window Head Flashing	4.1b J-Mould Face -	Std. Range PC	Auxiliary Cladding System Components				7.0	Aluminium Flashings:
	4.2 Drained B.o.C. Base -	PC on Request	5.0	Suggested Membrane & Tapes :			Std. Range PC	
	4.3a Internal Corner Base -	Std. MILL	5.1 E2/AS1 Table 23 Compliant Membrane system	7.1 Jamb Flashing-	7.2 AL 1.6mm Custom Folded			
	4.3b Internal Corner Face -	Std. Range PC	5.2 Sill Tape -150mm	7.3 AL 1.8mm Custom Folded	7.4 AL 50X20X3mm Angle			
	4.4a External Corner Base -	Std. MILL	5.3 Fabric Flashing Tape - 60mm	7.5 AL 40X20X1.6mm Angle				
	4.4b External Corner Base -	Std. Range PC	5.4 Wet Seal Adhesion Tape					
2.0	AliClad Elements :	Std. MILL	5.5 Closed Cell EPDM Tape					
2.1 AliClad Vertical Shiplap Weatherboard Cladding	4.5a Vertical Jointer Base -	Std. Range PC						
2.2 AC-Starter -	4.5b Vertical Jointer Face -	Std. MILL						
2.3 AC-Clamp Channel -	4.6 Jamb Clip -	Std. MILL						

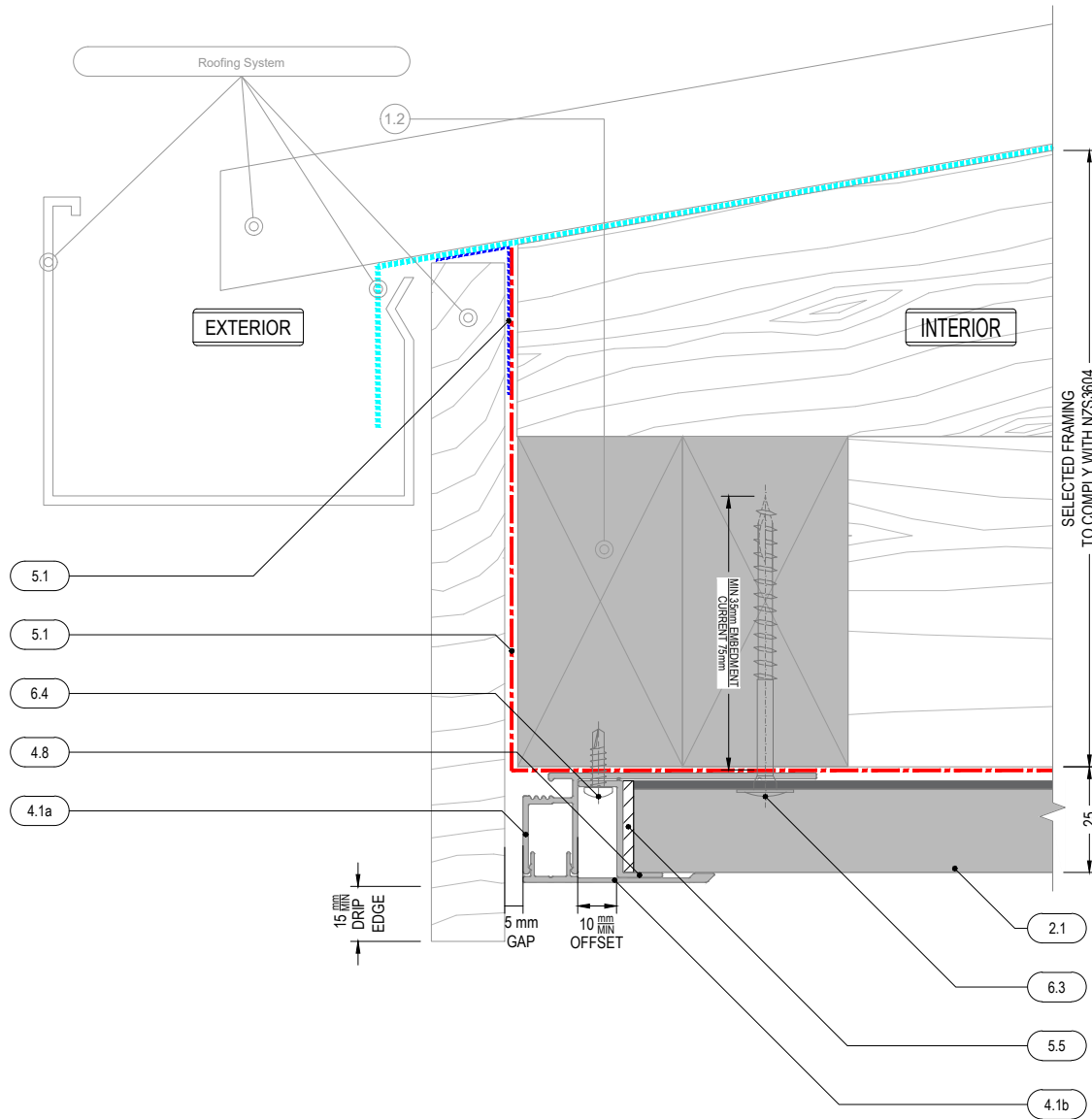
BTM Cladding_ Apron Roof

Detail Number

AC-V-AR-4.4

Version

SEP 2022 [v2.0]



NOTE
Weathering membrane under soffit is not requirement but is recommendable for air barrier performance when a rigid wind barrier is not in use.

Structure : By Others		Cladding Support Elements :		Mechanical Windowsill Drainage Elements :		Auxiliary Cladding System Components		Suggested Membrane & Tapes :		Fixings:	
1.1 Concrete	3.0	20mm AL. Cavity Battens	4.7 Sill Clip Face - Flush Window -	Std. Range PC	6.0	7.1 Jamb Flashing-	7.0	5.1 E2/AS1 Table 23 Compliant Membrane system	7.1	HexTek SD Screw 10mm Hex	
1.2 Timber	3.1 AlphaRail20 -	AL. 1.6mm Packer	4.8 BigZed -	Std. MILL	6.1 SS304 10gx20mm	7.2 AL. 1.6mm Custom Folded	7.2	5.2 Sill Tape -150mm	7.2	PH SD Screw #2 Sq.Dr	
1.3 Internal Lining	3.1a AlphaClip -	AL. 3mm Packer	4.9 Sill Clip Face - Punch Window -	Std. Range PC	6.2 SS304 8gx35mm	7.3 AL. 1.8mm Custom Folded	7.3	5.3 Fabric Flashing Tape - 60mm	7.3	HexTek Screw 10mm Hex	
1.4 Insulation	3.1b AlphaClip3 -	AL. 5mm Packer	4.10 Vermin Flashing -	PC on Request	6.3 SS304 12gx75mm	7.4 AL. 50X20X3mm Angle	7.4	5.4 Wet Seal Adhesion Tape	7.4	PH SD ST Screw	
1.5 Window Joinery	3.1c AlphaClip5 -	AL. 10mm Packer	Mechanical Windowsill Drainage Elements :		6.4 SS304 8gx 16mm	7.5 AL. 40X20X1.6mm Angle	7.5	5.5 Closed Cell EPDM Tape	6.5 AS73 4-4	Truss Pop Rivet	
1.6 Approved Sealant on PEF Rod to suit gap	3.1d AlphaClip10 -		4.11a Typ.1 Jamb Tray Right -	For Windows With WANZ	6.5 AS73 4-4			6.6 M4x16mm	6.6	CS SD Screw	
1.7 Damp Proof Course/Membrane	4.0	Two Piece Flashing & Junction Elements :		For Windows Without WANZ	6.7 SS304 8gx 20mm			6.7	CS ST Screw		
1.8 WANZ Support Bar	4.1a J-Mould Base -	PC on Request	4.11b Typ.1 Jamb Tray Left -	For Windows With WANZ							
1.9 Window Head Flashing	4.1b J-Mould Face -	Std. Range PC	4.12a Typ.2 Jamb Tray Right -	For Windows Without WANZ							
	4.2 Drained B.o.C. Base -	Std. MILL	4.12b Typ.2 Jamb Tray Left -	For Windows Without WANZ							
	4.3a Internal Corner Base -	PC on Request	Auxiliary Cladding System Components								
	4.3b Internal Corner Face -	Std. Range PC	5.0								
	4.4a External Corner Base -	Std. MILL	5.1								
	4.4b External Corner Face -	Std. Range PC	5.2								
	4.5a Vertical Jointer Base -	Std. MILL	5.3								
	4.5b Vertical Jointer Face -	Std. Range PC	5.4								
	4.6 Jamb Clip -	Std. MILL	5.5								

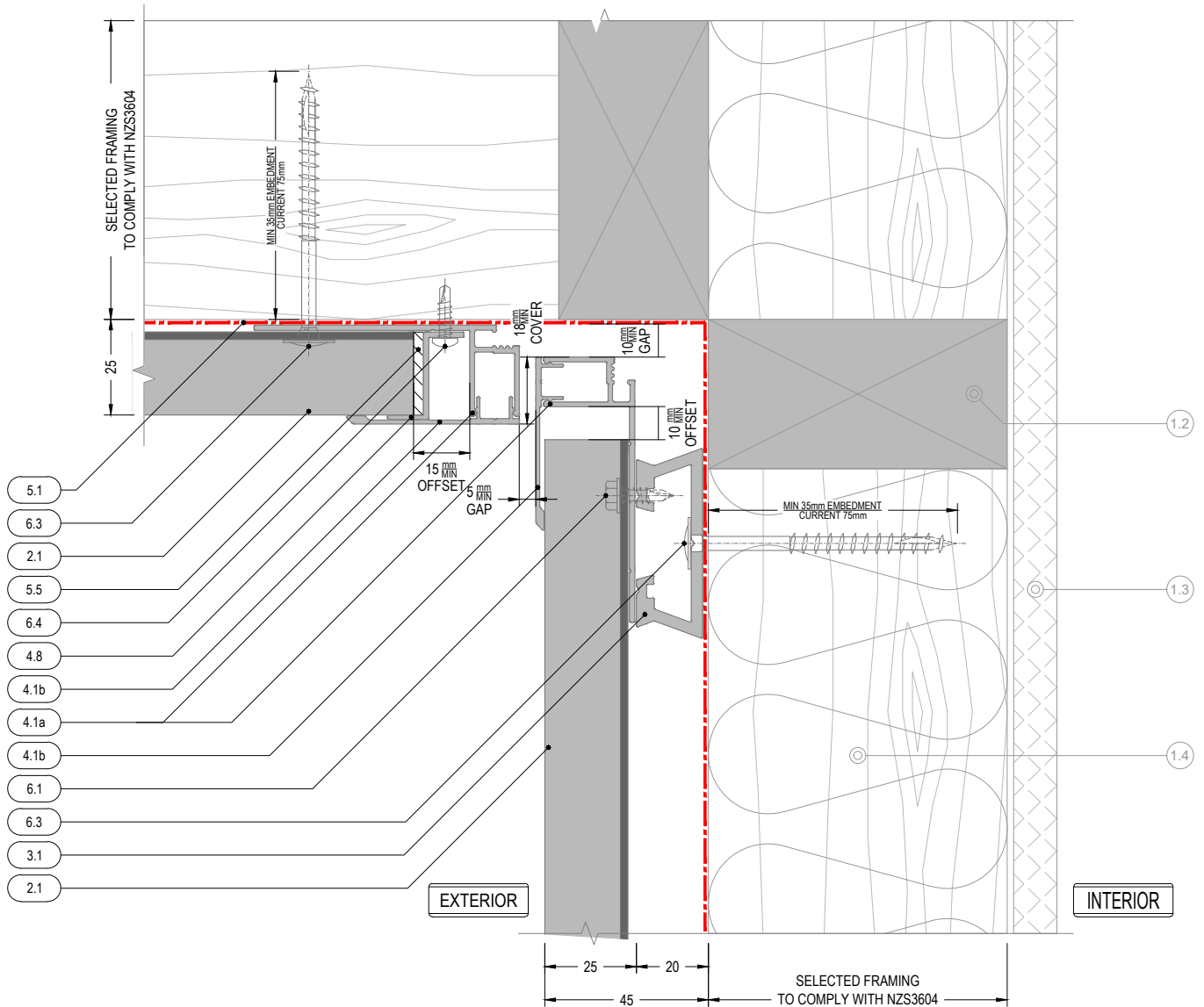
Detail Number

AC-V-AR-4.8

Version

SEP 2022 [v2.0]

Top Cladding_Barge/Fascia Board



NOTE
Weathering membrane under soffit is not requirement but is recommendable for air barrier performance when a rigid wind barrier is not in use.

Structure : By Others		Cladding Support Elements :		Mechanical Windowsill Drainage Elements :		Auxiliary Cladding System Components		Suggested Membrane & Tapes :	
1.1 Concrete	3.0	4.7 Sill Clip Face - Flush Window -	Std. Range PC	6.0	7.1 Jamb Flashing-	7.1	7.1	7.1	7.1
1.2 Timber	3.1 AlphaRail20 -	4.8 BigZed -	Std. MILL	6.1 SS304 10gx20mm	7.2 AL 1.6mm Custom Folded	7.2	7.2	7.2	7.2
1.3 Internal Lining	3.1a AlphaClip -	4.9 Sill Clip Face - Punch Window -	Std. Range PC	6.2 SS304 8gx35mm	7.3 AL 1.8mm Custom Folded	7.3	7.3	7.3	7.3
1.4 Insulation	3.1b AlphaClip3 -	4.10 Vermin Flashing -	PC on Request	6.3 SS304 12gx75mm	7.4 AL 50X20X3mm Angle	7.4	7.4	7.4	7.4
1.5 Window Joinery	3.1c AlphaClip5 -			6.4 SS304 8gx 16mm	7.5 AL 40X20X1.6mm Angle	7.5	7.5	7.5	7.5
1.6 Approved Sealant on PEF Rod to suit gap	3.1d AlphaClip10 -			6.5 AS73 4-4					
1.7 Damp Proof Course/Membrane	4.0			6.6 M4x16mm					
1.8 WANZ Support Bar	4.1a J-Mould Base -			6.7 SS304 8gx 20mm					
1.9 Window Head Flashing	4.1b J-Mould Face -								
	4.2 Drained B.o.C. Base -								
	4.3a Internal Corner Base -								
	4.3b Internal Corner Face -								
	4.4a External Corner Base -								
	4.4b External Corner Face -								
	4.4c External Corner Base -								
	4.4d External Corner Face -								
	4.5a Vertical Jointer Base -								
	4.5b Vertical Jointer Face -								
	4.6 Jamb Clip -								

Wall BLW_Soffit <90°

Detail Number

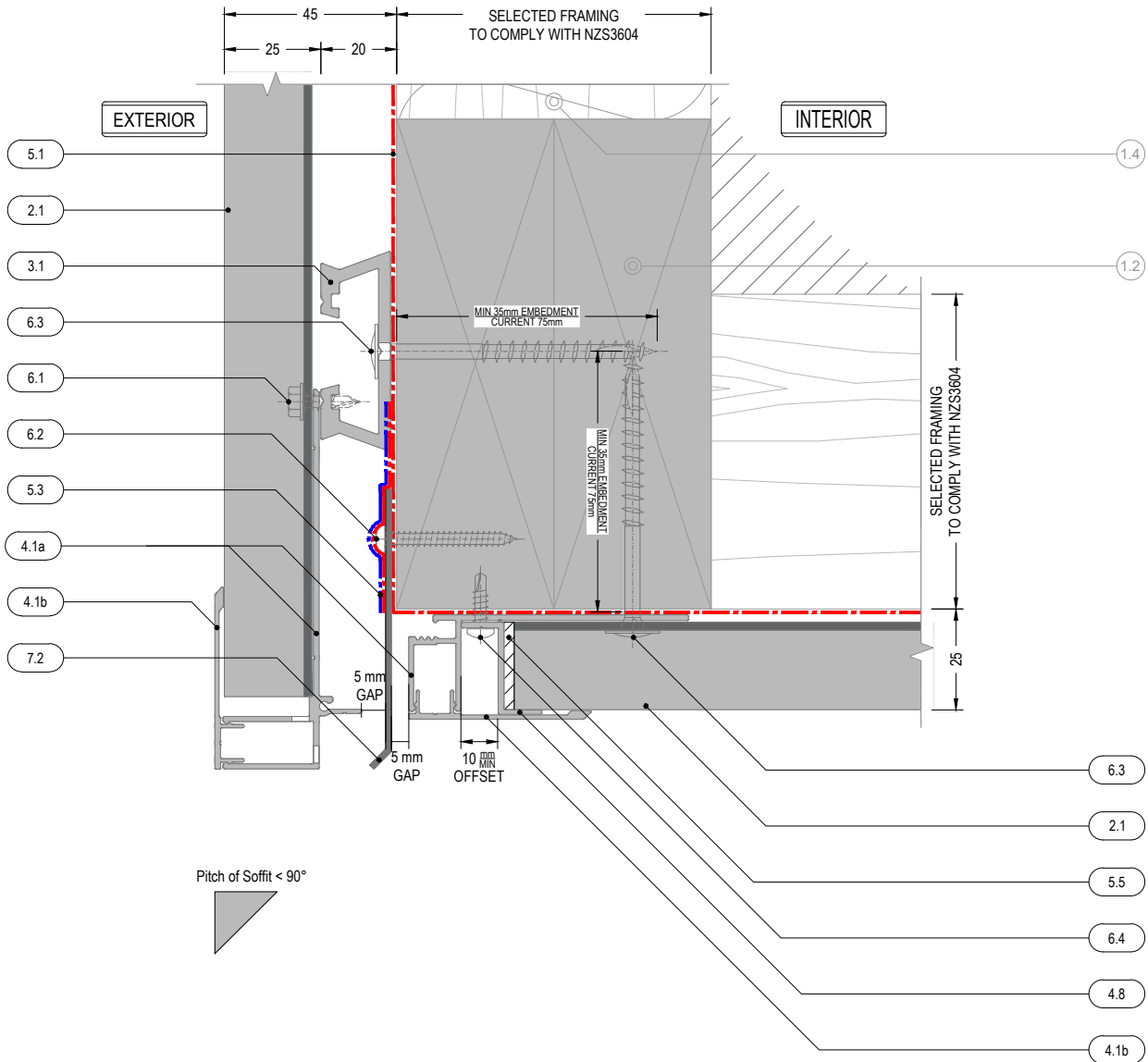
AC-V-AR-5.1

Version

SEP 2022 [v2.0]



MATERIALS • SYSTEMS • SOLUTIONS



NOTE
Weathering membrane under soffit is not requirement but is recommendable for air barrier performance when a rigid wind barrier is not in use.

Structure : By Others		Cladding Support Elements :		Mechanical Windowsill Drainage Elements :		Auxiliary Cladding System Components		Suggested Membrane & Tapes :		Fixings:	
1.1 Concrete	3.0	20mm AL. Cavity Battens	4.7 Sill Clip Face - Flush Window -	Std. Range PC	6.0	7.1 Jamb Flashing-	5.0	5.1 E2/AS1 Table 23 Compliant Membrane system	7.1 HexTek SD Screw 10mm Hex		
1.2 Timber	3.1 AlphaRail20 -	AL. 1.6mm Packer	4.8 BigZed -	Std. MILL	6.1 SS304 10gx20mm	7.2 AL. 1.6mm Custom Folded	5.2 Sill Tape -150mm	5.2 Sill Tape -150mm	6.2 SS304 8gx35mm	PH SD Screw #2 Sq.Dr	
1.3 Internal Lining	3.1a AlphaClip -	AL. 3mm Packer	4.9 Sill Clip Face - Punch Window -	Std. Range PC	6.2 SS304 12gx75mm	7.3 AL. 1.8mm Custom Folded	5.3 Fabric Flashing Tape - 60mm	5.3 Fabric Flashing Tape - 60mm	6.3 SS304 8gx 16mm	HexTek Screw 10mm Hex	
1.4 Insulation	3.1b AlphaClip3 -	AL. 5mm Packer	4.10 Vermin Flashing -	PC on Request	6.3 SS304 8gx 16mm	7.4 AL. 50X20X3mm Angle	5.4 Wet Seal Adhesion Tape	5.4 Wet Seal Adhesion Tape	6.4 SS304 12gx75mm	HexTek Screw 10mm Hex	
1.5 Window Joinery	3.1c AlphaClip5 -	AL. 10mm Packer		PC on Request	6.4 SS304 8gx 16mm	7.5 AL. 40X20X1.6mm Angle	5.5 Closed Cell EPDM Tape	5.5 Closed Cell EPDM Tape	6.5 AS73 4-4	PH SD ST Screw	
1.6 Approved Sealant on PEF Rod to suit gap	3.1d AlphaClip10 -		4.11a Typ.1 Jamb Tray Right -	Std. MILL	6.5 AS73 4-4				6.6 M4x16mm	Truss Pop Rivet	
1.7 Damp Proof Course/Membrane	4.0		4.11b Typ.1 Jamb Tray Left -	Std. Range PC	6.6 M4x16mm				6.7 SS304 8gx 20mm	CS SD Screw	
1.8 WANZ Support Bar	4.1a J-Mould Base -		4.12a Typ.2 Jamb Tray Right -	Std. MILL	6.7 SS304 8gx 20mm					CS ST Screw	
1.9 Window Head Flashing	4.1b J-Mould Face -		4.12b Typ.2 Jamb Tray Left -	PC on Request							
	4.2 Drained B.o.C. Base -			Std. Range PC							
	4.3a Internal Corner Base -			Std. MILL							
	4.3b Internal Corner Face -			Std. Range PC							
	4.4a External Corner Base -			Std. MILL							
	4.4b External Corner Face -			Std. Range PC							
	4.5a Vertical Jointer Base -			Std. MILL							
	4.5b Vertical Jointer Face -			Std. Range PC							
	4.6 Jamb Clip -			Std. MILL							

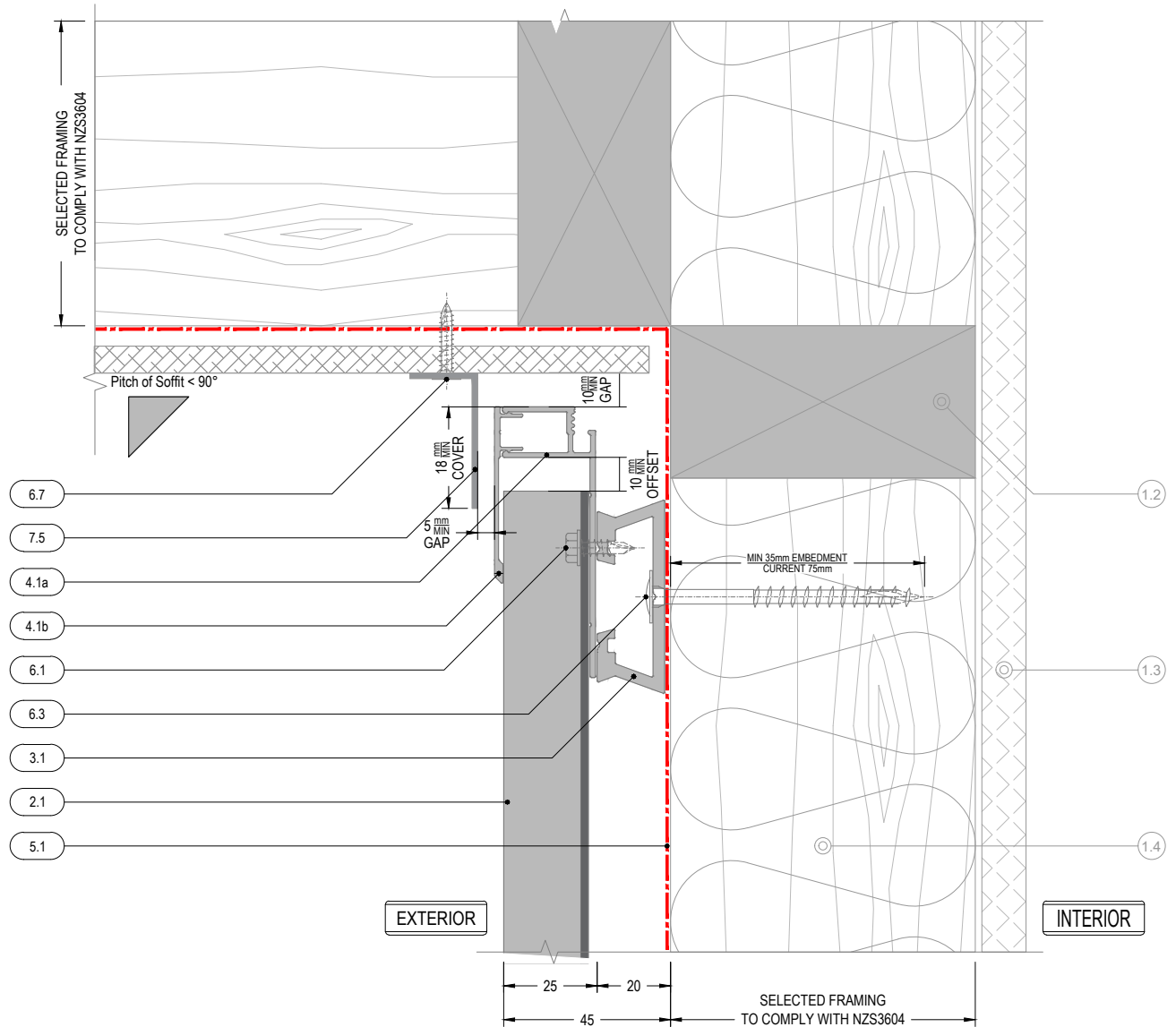
Detail Number

AC-V-AR-5.2

Version

SEP 2022 [v2.0]

Wall ABV_Soffit <90°



NOTE
Weathering membrane under soffit is not requirement but is recommendable for air barrier performance when a rigid wind barrier is not in use.

Structure : By Others

- 1.1 Concrete
- 1.2 Timber
- 1.3 Internal Lining
- 1.4 Insulation
- 1.5 Window Joinery
- 1.6 Approved Sealant on PEF Rod to suit gap
- 1.7 Damp Proof Course/Membrane
- 1.8 WANZ Support Bar
- 1.9 Window Head Flashing

AliClad Cladding System

- 2.0 AliClad Elements :
- 2.1 AliClad Vertical Shiplap Weatherboard Cladding
- 2.2 AC-Starter - Std. MILL
- 2.3 AC-Clamp Channel - Std. MILL

- 3.0
- 3.1 AlphaRail20 -
- 3.1a AlphaClip -
- 3.1b AlphaClip3 -
- 3.1c AlphaClip5 -
- 3.1d AlphaClip10 -

Two Piece Flashing & Junction Elements :

- 4.0
- 4.1a J-Mould Base -
- 4.1b J-Mould Face -
- 4.2 Drained B.o.C. Base -
- 4.3a Internal Corner Base -
- 4.3b Internal Corner Face -
- 4.4a External Corner Base -
- 4.4b External Corner Base -
- 4.5a Vertical Jointer Base -
- 4.5b Vertical Jointer Face -
- 4.6 Jamb Clip -

- Cladding Support Elements :**
- 20mm AL. Cavity Battens
 - AL. 1.6mm Packer
 - AL. 3mm Packer
 - AL. 5mm Packer
 - AL. 10mm Packer

PC on Request

- Std. Range PC
- Std. MILL
- Std. Range PC
- Std. MILL
- Std. Range PC
- Std. MILL
- Std. Range PC
- Std. MILL

- 4.7 Sill Clip Face - Flush Window -
- 4.8 BigZed -
- 4.9 Sill Clip Face - Punch Window -
- 4.10 Vermin Flashing -

Mechanical Windowsill Drainage Elements :

- 4.11a Typ.1 Jamb Tray Right - For Windows With WANZ
- 4.11b Typ.1 Jamb Tray Left - For Windows With WANZ
- 4.12a Typ.2 Jamb Tray Right - For Windows Without WANZ
- 4.12b Typ.2 Jamb Tray Left - For Windows Without WANZ

Auxiliary Cladding System Components

- 5.0
- 5.1 E2/AS1 Table 23 Compliant Membrane system
- 5.2 Sill Tape -150mm
- 5.3 Fabric Flashing Tape - 60mm
- 5.4 Wet Seal Adhesion Tape
- 5.5 Closed Cell EPDM Tape

Std. Range PC

- Std. MILL
- Std. Range PC
- PC on Request
- 6.4 SS304 8gx 16mm
- 6.5 AS73 4-4
- 6.6 M4x16mm
- 6.7 SS304 8gx 20mm

6.0

- 6.1 SS304 10gx20mm
- 6.2 SS304 8gx35mm
- 6.3 SS304 12gx75mm
- 6.4 SS304 8gx 16mm
- 6.5 AS73 4-4
- 6.6 M4x16mm
- 6.7 SS304 8gx 20mm

Fixings:

- HexTek SD Screw 10mm Hex
- PH SD Screw #2 Sq.Dr
- HexTek Screw 10mm Hex
- PH SD ST Screw
- Truss Pop Rivet
- CS SD Screw
- CS ST Screw

Aluminium Flashings:

- Std. Range PC

7.0

- Suggested Membrane & Tapes :**
- 7.1 Jamb Flashing-
 - 7.2 AL. 1.6mm Custom Folded
 - 7.3 AL. 1.8mm Custom Folded
 - 7.4 AL. 50X20X3mm Angle
 - 7.5 AL. 40X20X1.6mm Angle

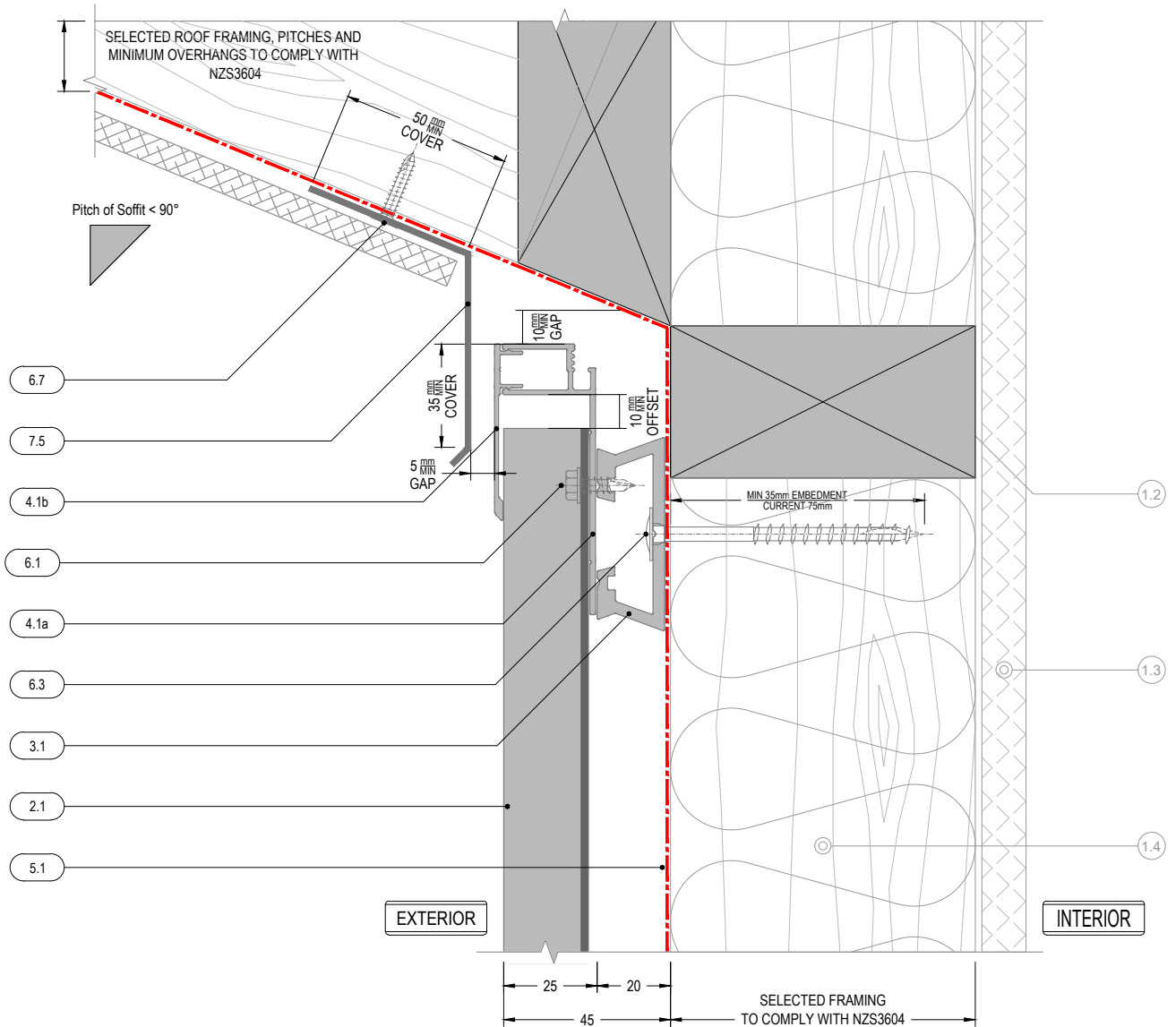
Detail Number

AC-V-AR-5.6

Version

SEP 2022 [v2.0]

Wall BLW_Flat Sheet Soffit <90°



NOTE
Weathering membrane under soffit is not requirement but is recommendable for air barrier performance when a rigid wind barrier is not in use.

Structure : By Others

- 1.1 Concrete
- 1.2 Timber
- 1.3 Internal Lining
- 1.4 Insulation
- 1.5 Window Joinery
- 1.6 Approved Sealant on PEF Rod to suit gap
- 1.7 Damp Proof Course/Membrane
- 1.8 WANZ Support Bar
- 1.9 Window Head Flashing

AliClad Cladding System

- 2.0 AliClad Elements :
- 2.1 AliClad Vertical Shiplap Weatherboard Cladding
- 2.2 AC-Starter - Std. MILL
- 2.3 AC-Clamp Channel - Std. MILL

3.0

- 3.1 AlphaRail20 -
- 3.1a AlphaClip -
- 3.1b AlphaClip3 -
- 3.1c AlphaClip5 -
- 3.1d AlphaClip10 -

4.0

- 4.1a J-Mould Base -
- 4.1b J-Mould Face -
- 4.2 Drained B.o.C. Base -
- 4.3a Internal Corner Base -
- 4.3b Internal Corner Face -
- 4.4a External Corner Base -
- 4.4b External Corner Base -
- 4.5a Vertical Jointer Base -
- 4.5b Vertical Jointer Face -
- 4.6 Jamb Clip -

Cladding Support Elements :

- 20mm AL. Cavity Battens
- AL. 1.6mm Packer
- AL. 3mm Packer
- AL. 5mm Packer
- AL. 10mm Packer

Two Piece Flashing & Junction Elements :

- PC on Request
- Std. Range PC
- PC on Request
- Std. Range PC
- Std. MILL
- Std. Range PC
- Std. MILL
- Std. Range PC
- Std. MILL
- Std. Range PC
- Std. MILL

4.7 Sill Clip Face - Flush Window -

- 4.8 BigZed -
- 4.9 Sill Clip Face - Punch Window -
- 4.10 Vermin Flashing -
- 4.11a Typ.1 Jamb Tray Right - For Windows With WANZ
- 4.11b Typ.1 Jamb Tray Left - For Windows With WANZ
- 4.12a Typ.2 Jamb Tray Right - For Windows Without WANZ
- 4.12b Typ.2 Jamb Tray Left - For Windows Without WANZ

Auxiliary Cladding System Components

- 5.0 PC on Request
- 5.1 E2/AS1 Table 23 Compliant Membrane system
- 5.2 Sill Tape -150mm
- 5.3 Fabric Flashing Tape - 60mm
- 5.4 Wet Seal Adhesion Tape
- 5.5 Closed Cell EPDM Tape

Std. Range PC

- Std. MILL
- Std. Range PC
- PC on Request
- Std. Range PC
- Std. MILL
- Std. Range PC
- Std. MILL
- Std. Range PC
- Std. MILL

Suggested Membrane & Tapes :

- 7.1 Jamb Flashing-
- 7.2 AL. 1.6mm Custom Folded
- 7.3 AL. 1.8mm Custom Folded
- 7.4 AL. 50X20X3mm Angle
- 7.5 AL. 40X20X1.6mm Angle

6.0

- 6.1 SS304 10gx20mm
- 6.2 SS304 8gx35mm
- 6.3 SS304 12gx75mm
- 6.4 SS304 8gx 16mm
- 6.5 AS73 4-4
- 6.6 M4x16mm
- 6.7 SS304 8gx 20mm

Fixings:

- HexTek SD Screw 10mm Hex
- PH SD Screw #2 Sq.Dr
- HexTek Screw 10mm Hex
- PH SD ST Screw
- Truss Pop Rivet
- CS SD Screw
- CS ST Screw

Aluminium Flashings:

- Std. Range PC

Detail Number

AC-V-AR-5.8

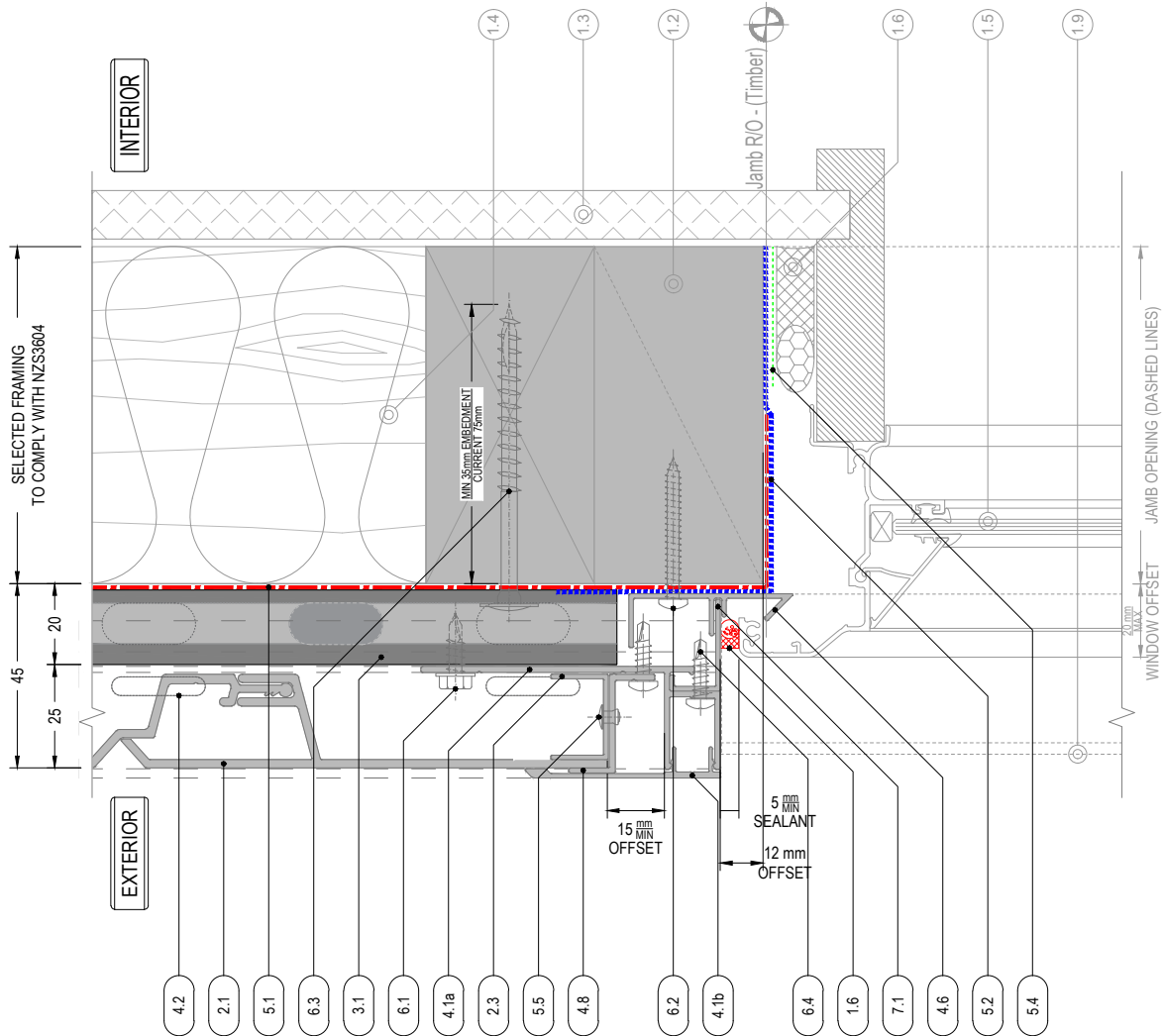
Version

SEP 2022 [v2.0]



MATERIALS • SYSTEMS • SOLUTIONS

Wall BLW_Flat Sheet Soffit >90°



NOTE
"4.2" is shown as a dashed line

Structure : By Others

- 1.1 Concrete
- 1.2 Timber
- 1.3 Internal Lining
- 1.4 Insulation
- 1.5 Window Joinery
- 1.6 Approved Sealant on PEF Rod to suit gap
- 1.7 Damp Proof Course/Membrane
- 1.8 WANZ Support Bar
- 1.9 Window Head Flashing

AliClad Cladding System

- 2.0 AliClad Elements :
- 2.1 AliClad Vertical Shiplap Weatherboard Cladding
- 2.2 AC-Starter - Std. MILL
- 2.3 AC-Clamp Channel - Std. MILL

- 3.0 AlphaRail20 -
- 3.1a AlphaClip -
- 3.1b AlphaClip3 -
- 3.1c AlphaClip5 -
- 3.1d AlphaClip10 -

Two Piece Flashing & Junction Elements :

- 4.0 J-Mould Base -
- 4.1a J-Mould Face -
- 4.1b J-Mould Face -
- 4.2 Drained B.o.C. Base -
- 4.3a Internal Corner Base -
- 4.3b Internal Corner Face -
- 4.4a External Corner Base -
- 4.4b External Corner Base -
- 4.5a Vertical Jointer Base -
- 4.5b Vertical Jointer Face -
- 4.6 Jamb Clip -

Cladding Support Elements :

- 20mm AL. Cavity Battens
- AL. 1.6mm Packer
- AL. 3mm Packer
- AL. 5mm Packer
- AL. 10mm Packer

PC on Request

- Std. Range PC
- Std. MILL
- Std. Range PC
- Std. MILL
- Std. Range PC
- Std. MILL
- Std. Range PC
- Std. MILL

- 4.7 Sill Clip Face - Flush Window -
- 4.8 BigZed -
- 4.9 Sill Clip Face - Punch Window -
- 4.10 Vermin Flashing -

- 4.11a Typ.1 Jamb Tray Right - For Windows With WANZ
- 4.11b Typ.1 Jamb Tray Left - For Windows With WANZ
- 4.12a Typ.2 Jamb Tray Right - For Windows Without WANZ
- 4.12b Typ.2 Jamb Tray Left - For Windows Without WANZ

Auxiliary Cladding System Components

- 5.0 Suggested Membrane & Tapes :
- 5.1 E2/AS1 Table 23 Compliant Membrane system
- 5.2 Sill Tape -150mm
- 5.3 Fabric Flashing Tape - 60mm
- 5.4 Wet Seal Adhesion Tape
- 5.5 Closed Cell EPDM Tape

Std. Range PC

- Std. MILL
- Std. Range PC
- PC on Request

Mechanical Windowsill Drainage Elements :

- 6.1 SS304 10gx20mm HexTek SD Screw 10mm Hex
- 6.2 SS304 8gx35mm PH SD Screw #2 Sq.Dr
- 6.3 SS304 12gx75mm HexTek Screw 10mm Hex
- 6.4 SS304 8gx 16mm PH SD ST Screw
- 6.5 AS73 4-4 Truss Pop Rivet
- 6.6 M4x16mm CS SD Screw
- 6.7 SS304 8gx 20mm CS ST Screw

Fixings:

- 7.0 Aluminium Flashings:
- 7.1 Jamb Flashing-
- 7.2 AL. 1.6mm Custom Folded
- 7.3 AL. 1.8mm Custom Folded
- 7.4 AL. 50X20X3mm Angle
- 7.5 AL. 40X20X1.6mm Angle

Window Jamb_Recessed

Detail Number

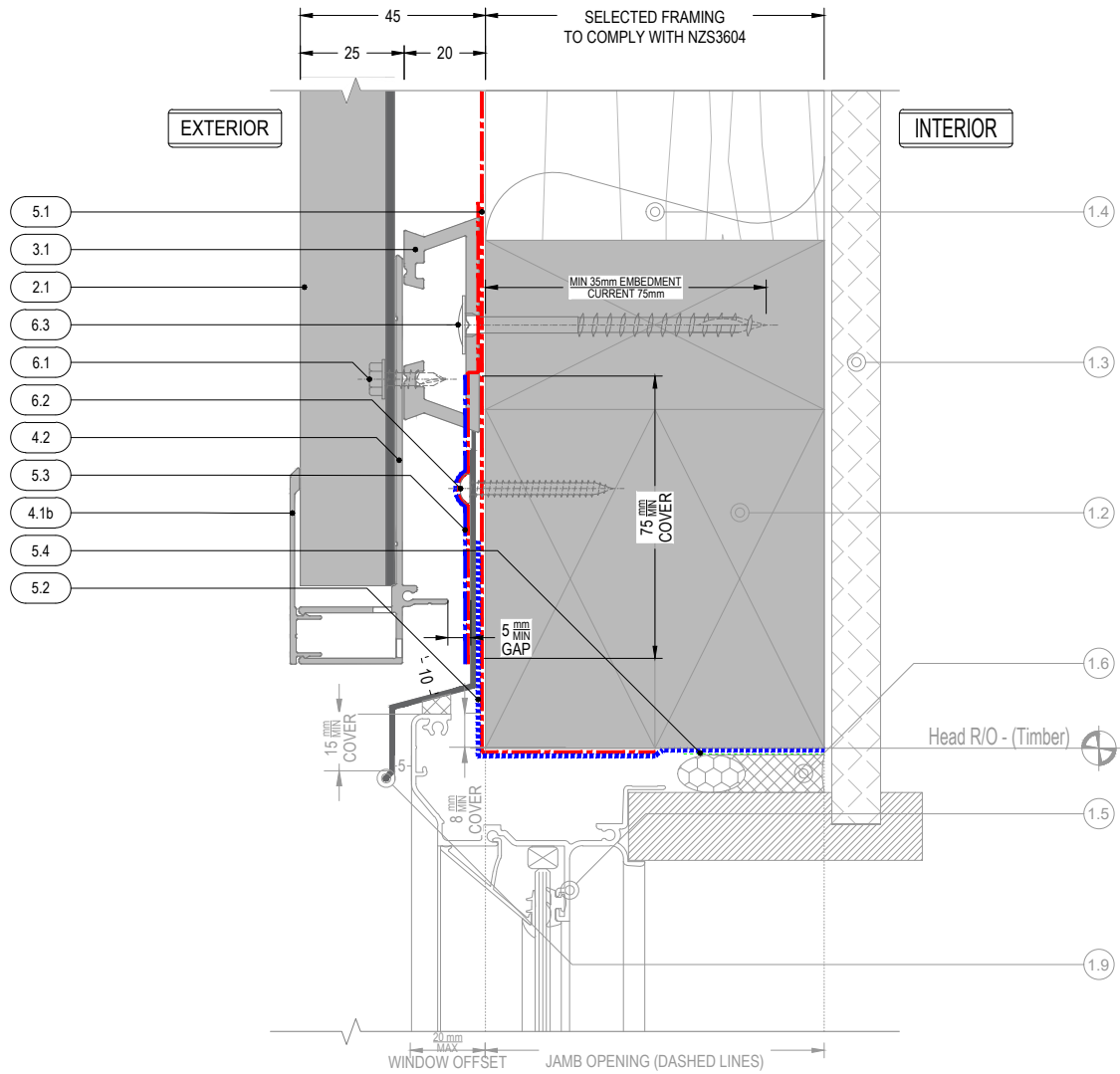
AC-V-AR-7.1

Version

SEP 2022 [v2.0]



MATERIALS • SYSTEMS • SOLUTIONS



NOTE
Refer to drawing "7.1" for sill/jamb junction plan view

Structure : By Others

- 1.1 Concrete
- 1.2 Timber
- 1.3 Internal Lining
- 1.4 Insulation
- 1.5 Window Joinery
- 1.6 Approved Sealant on PEF Rod to suit gap
- 1.7 Damp Proof Course/Membrane
- 1.8 WANZ Support Bar
- 1.9 Window Head Flashing

AliClad Cladding System

- 2.0 AliClad Elements :
- 2.1 AliClad Vertical Shiplap Weatherboard Cladding
- 2.2 AC-Starter - Std. MILL
- 2.3 AC-Clamp Channel - Std. MILL

- 3.0 AlphaRail20 -
- 3.1 AlphaClip -
- 3.1a AlphaClip3 -
- 3.1b AlphaClip5 -
- 3.1c AlphaClip10 -

Two Piece Flashing & Junction Elements :

- 4.0 J-Mould Base -
- 4.1a J-Mould Face -
- 4.2 Drained B.o.C. Base -
- 4.3a Internal Corner Base -
- 4.3b Internal Corner Face -
- 4.4a External Corner Base -
- 4.4b External Corner Face -
- 4.5a Vertical Jointer Base -
- 4.5b Vertical Jointer Face -
- 4.6 Jamb Clip -

Cladding Support Elements :

- 20mm AL. Cavity Battens
- AL. 1.6mm Packer
- AL. 3mm Packer
- AL. 5mm Packer
- AL. 10mm Packer

PC on Request

- Std. Range PC
- Std. MILL
- PC on Request
- Std. Range PC
- Std. MILL
- PC on Request
- Std. Range PC
- Std. MILL
- PC on Request
- Std. Range PC
- Std. MILL

- 4.7 Sill Clip Face - Flush Window -
- 4.8 BigZed -
- 4.9 Sill Clip Face - Punch Window -
- 4.10 Vermin Flashing -

Mechanical Windowsill Drainage Elements :

- 4.11a Typ.1 Jamb Tray Right - For Windows With WANZ
- 4.11b Typ.1 Jamb Tray Left - For Windows With WANZ
- 4.12a Typ.2 Jamb Tray Right - For Windows Without WANZ
- 4.12b Typ.2 Jamb Tray Left - For Windows Without WANZ

Auxiliary Cladding System Components

- 5.0 E2/AS1 Table 23 Compliant Membrane system
- 5.1 Sill Tape -150mm
- 5.2 Fabric Flashing Tape - 60mm
- 5.3 Wet Seal Adhesion Tape
- 5.4 Closed Cell EPDM Tape

Std. Range PC

- 6.0 SS304 10gx20mm
- 6.1 SS304 8gx35mm
- 6.2 SS304 12gx75mm
- 6.3 SS304 8gx 16mm
- 6.4 AS73 4-4
- 6.5 M4x16mm
- 6.6 SS304 8gx 20mm

Suggested Membrane & Tapes :

- 7.0 Jamb Flashing-
- 7.1 AL. 1.6mm Custom Folded
- 7.2 AL. 1.8mm Custom Folded
- 7.3 AL. 50X20X3mm Angle
- 7.4 AL. 40X20X1.6mm Angle

Fixings:

- HexTek SD Screw 10mm Hex
- PH SD Screw #2 Sq.Dr
- HexTek Screw 10mm Hex
- PH SD ST Screw
- Truss Pop Rivet
- CS SD Screw
- CS ST Screw

Aluminium Flashings:

- Std. Range PC

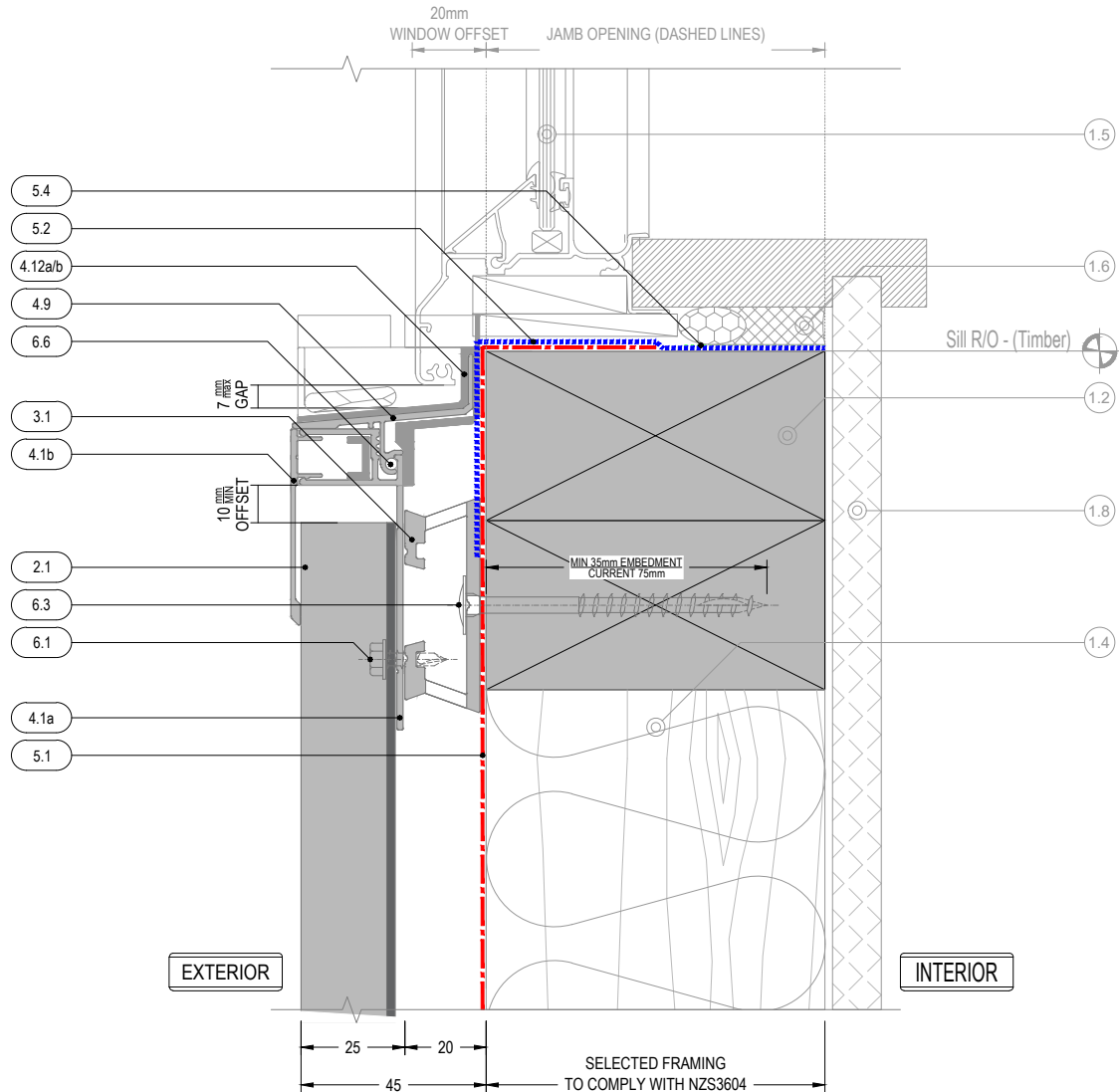
Detail Number

AC-V-AR-7.2

Version

SEP 2022 [v2.0]

Window Head_Recessed



NOTE
Refer to drawing "7.1" for sill/jamb junction plan view

Structure : By Others

- 1.1 Concrete
- 1.2 Timber
- 1.3 Internal Lining
- 1.4 Insulation
- 1.5 Window Joinery
- 1.6 Approved Sealant on PEF Rod to suit gap
- 1.7 Damp Proof Course/Membrane
- 1.8 WANZ Support Bar
- 1.9 Window Head Flashing

AliClad Cladding System

- 2.0 AliClad Elements :
- 2.1 AliClad Vertical Shiplap Weatherboard Cladding
- 2.2 AC-Starter - Std. MILL
- 2.3 AC-Clamp Channel - Std. MILL

- 3.0
- 3.1 AlphaRail20 -
- 3.1a AlphaClip -
- 3.1b AlphaClip3 -
- 3.1c AlphaClip5 -
- 3.1d AlphaClip10 -

Two Piece Flashing & Junction Elements :

- 4.0
- 4.1a J-Mould Base -
- 4.1b J-Mould Face -
- 4.2 Drained B.o.C. Base -
- 4.3a Internal Corner Base -
- 4.3b Internal Corner Face -
- 4.4a External Corner Base -
- 4.4b External Corner Base -
- 4.5a Vertical Jointer Base -
- 4.5b Vertical Jointer Face -
- 4.6 Jamb Clip -

Cladding Support Elements :

- 20mm AL. Cavity Battens
- AL. 1.6mm Packer
- AL. 3mm Packer
- AL. 5mm Packer
- AL. 10mm Packer

PC on Request

- Std. Range PC
- Std. MILL
- PC on Request
- Std. Range PC
- Std. MILL
- PC on Request
- Std. Range PC
- Std. MILL
- PC on Request
- Std. Range PC
- Std. MILL

- 4.7 Sill Clip Face - Flush Window -
- 4.8 BigZed -
- 4.9 Sill Clip Face - Punch Window -
- 4.10 Vermin Flashing -

- 4.11a Typ.1 Jamb Tray Right - For Windows With WANZ
- 4.11b Typ.1 Jamb Tray Left - For Windows With WANZ
- 4.12a Typ.2 Jamb Tray Right - For Windows Without WANZ
- 4.12b Typ.2 Jamb Tray Left - For Windows Without WANZ

Auxiliary Cladding System Components

- 5.0
- 5.1 E2/AS1 Table 23 Compliant Membrane system
- 5.2 Sill Tape -150mm
- 5.3 Fabric Flashing Tape - 60mm
- 5.4 Wet Seal Adhesion Tape
- 5.5 Closed Cell EPDM Tape

Std. Range PC

- Std. MILL
- Std. Range PC
- PC on Request
- Std. Range PC
- Std. MILL
- Std. Range PC
- Std. MILL
- Std. Range PC
- Std. MILL

7.0

- 7.1 Jamb Flashing-
- 7.2 AL. 1.6mm Custom Folded
- 7.3 AL. 1.8mm Custom Folded
- 7.4 AL. 50X20X3mm Angle
- 7.5 AL. 40X20X1.6mm Angle

6.0

- 6.1 SS304 10gx20mm
- 6.2 SS304 8gx35mm
- 6.3 SS304 12gx75mm
- 6.4 SS304 8gx 16mm
- 6.5 AS73 4-4
- 6.6 M4x16mm
- 6.7 SS304 8gx 20mm

Fixings:

- HexTek SD Screw 10mm Hex
- PH SD Screw #2 Sq.Dr
- HexTek Screw 10mm Hex
- PH SD ST Screw
- Truss Pop Rivet
- CS SD Screw
- CS ST Screw

Aluminium Flashings:

- Std. Range PC

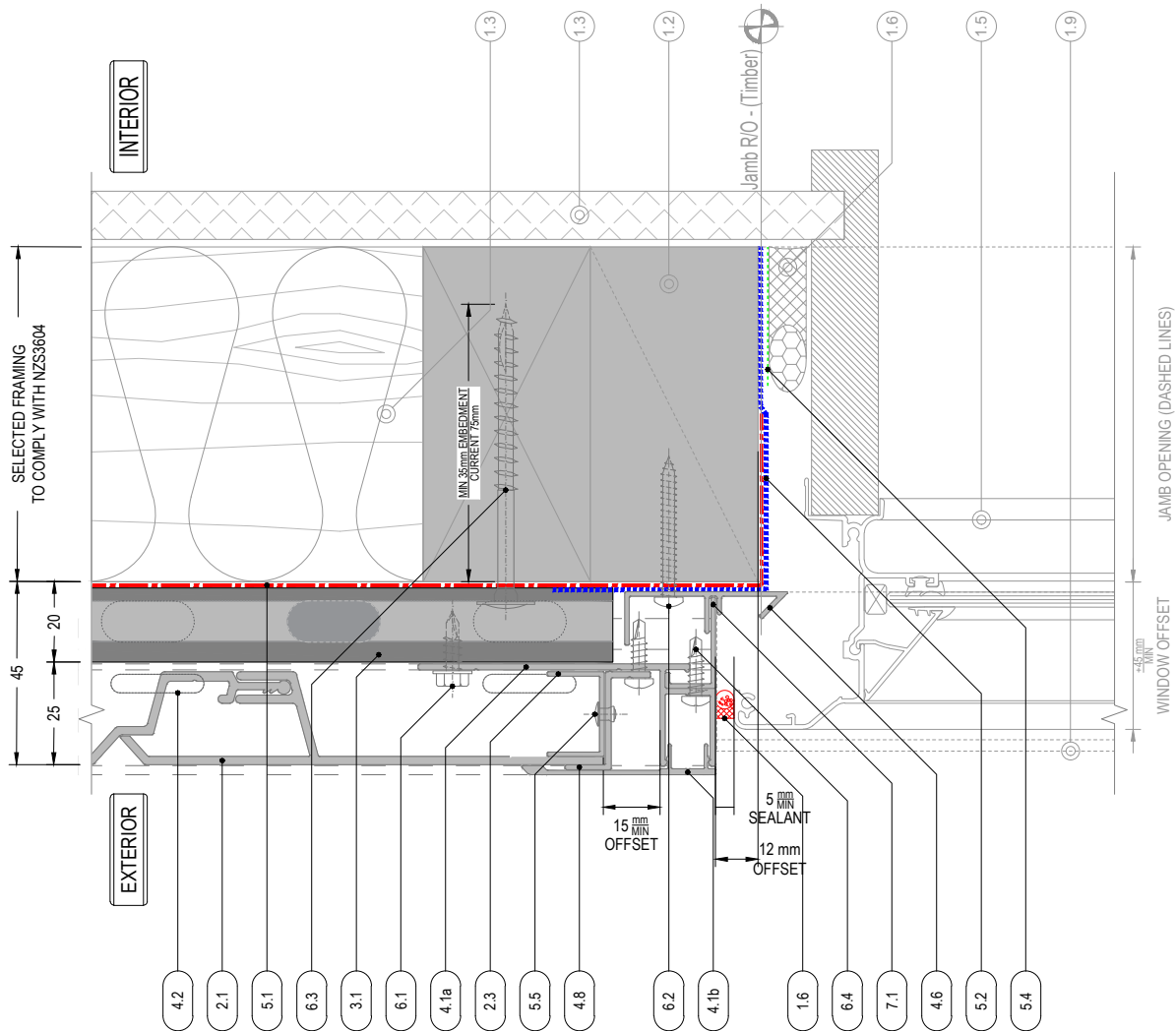
Detail Number

AC-V-AR-7.3

Version

SEP 2022 [v2.0]

Window Sill_Recessed



NOTE
"4.2" is shown as a dashed line

Structure : By Others

- 1.1 Concrete
- 1.2 Timber
- 1.3 Internal Lining
- 1.4 Insulation
- 1.5 Window Joinery
- 1.6 Approved Sealant on PEF Rod to suit gap
- 1.7 Damp Proof Course/Membrane
- 1.8 WANZ Support Bar
- 1.9 Window Head Flashing

AliClad Cladding System

- 2.0 AliClad Elements :
- 2.1 AliClad Vertical Shiplap Weatherboard Cladding
- 2.2 AC-Starter - Std. MILL
- 2.3 AC-Clamp Channel - Std. MILL

- 3.0 AlphaRail20 -
- 3.1 AlphaClip -
- 3.1a AlphaClip3 -
- 3.1b AlphaClip3 -
- 3.1c AlphaClip5 -
- 3.1d AlphaClip10 -

Two Piece Flashing & Junction Elements :

- 4.0 J-Mould Base -
- 4.1a J-Mould Base -
- 4.1b J-Mould Face -
- 4.2 Drained B.o.C. Base -
- 4.3a Internal Corner Base -
- 4.3b Internal Corner Face -
- 4.4a External Corner Base -
- 4.4b External Corner Base -
- 4.5a Vertical Jointer Base -
- 4.5b Vertical Jointer Face -
- 4.6 Jamb Clip -

Cladding Support Elements :

- 20mm AL. Cavity Battens
- AL. 1.6mm Packer
- AL. 3mm Packer
- AL. 5mm Packer
- AL. 10mm Packer

PC on Request

- 4.1a Typ.1 Jamb Tray Right - For Windows With WANZ
- 4.1b Typ.1 Jamb Tray Left - For Windows With WANZ
- 4.12a Typ.2 Jamb Tray Right - For Windows Without WANZ
- 4.12b Typ.2 Jamb Tray Left - For Windows Without WANZ

- 4.7 Sill Clip Face - Flush Window - Std. Range PC
- 4.8 BigZed - Std. MILL
- 4.9 Sill Clip Face - Punch Window - Std. Range PC
- 4.10 Vermin Flashing - PC on Request

Mechanical Windowsill Drainage Elements :

- 4.11a Typ.1 Jamb Tray Right - For Windows With WANZ
- 4.11b Typ.1 Jamb Tray Left - For Windows With WANZ
- 4.12a Typ.2 Jamb Tray Right - For Windows Without WANZ
- 4.12b Typ.2 Jamb Tray Left - For Windows Without WANZ

Auxiliary Cladding System Components

- 5.0 PC on Request
- 5.1 E2/AS1 Table 23 Compliant Membrane system
- 5.2 Sill Tape -150mm
- 5.3 Fabric Flashing Tape - 60mm
- 5.4 Wet Seal Adhesion Tape
- 5.5 Closed Cell EPDM Tape

Fixings:

- 6.0 HexTek SD Screw 10mm Hex
- 6.1 SS304 10gx20mm
- 6.2 SS304 8gx35mm
- 6.3 SS304 12gx75mm
- 6.4 SS304 8gx 16mm
- 6.5 AS73 4-4
- 6.6 M4x16mm
- 6.7 SS304 8gx 20mm
- 6.8 HexTek Screw #2 Sq.Dr
- 6.9 HexTek Screw 10mm Hex
- 7.0 PH SD ST Screw
- 7.1 Truss Pop Rivet
- 7.2 CS SD Screw
- 7.3 CS ST Screw

Aluminium Flashings:

- 7.4 Std. Range PC

Suggested Membrane & Tapes :

- 7.1 Jamb Flashing-
- 7.2 AL. 1.6mm Custom Folded
- 7.3 AL. 1.8mm Custom Folded
- 7.4 AL. 50X20X3mm Angle
- 7.5 AL. 40X20X1.6mm Angle

Detail Number

AC-V-AR-7.4

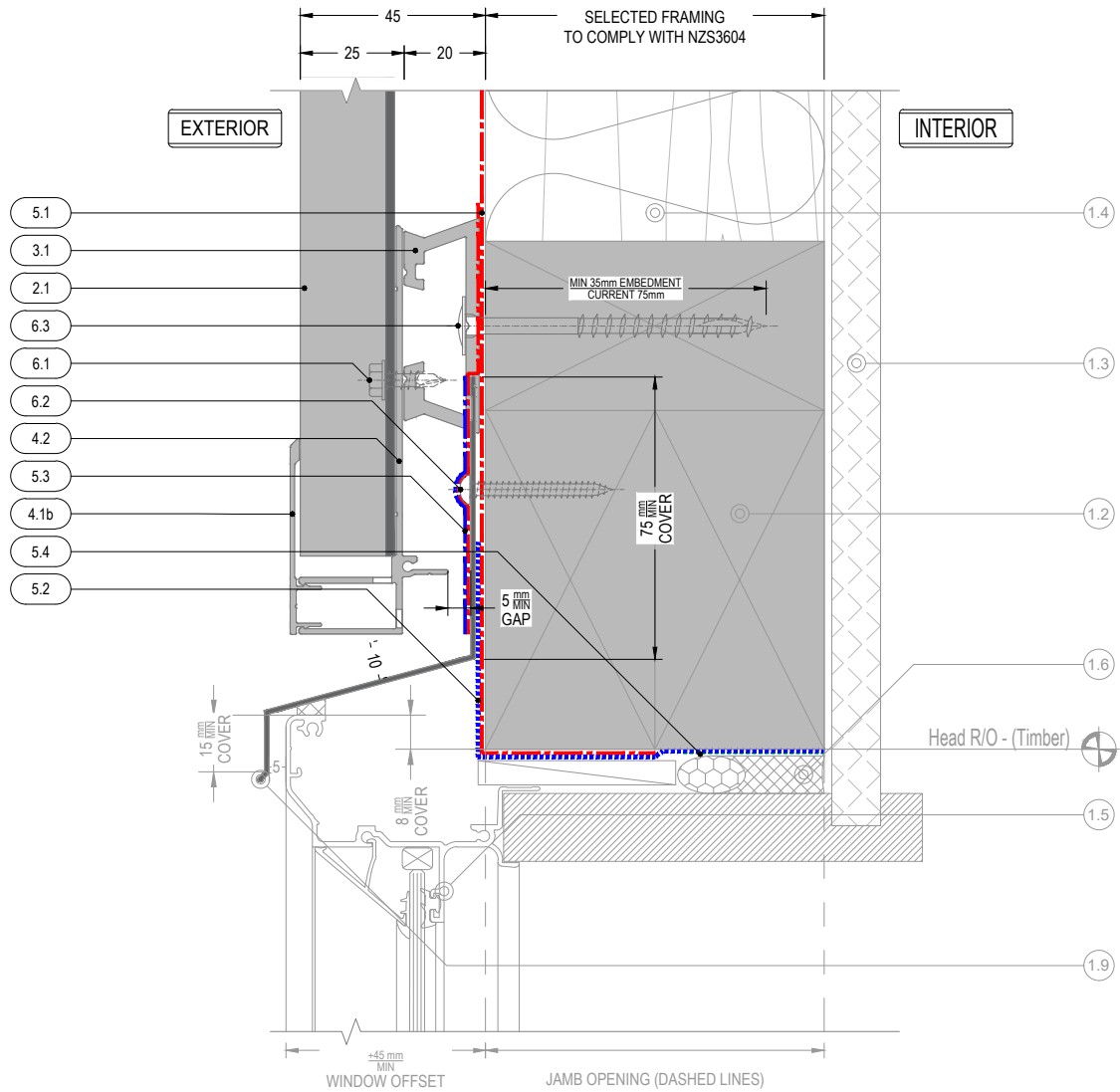
Version

SEP 2022 [v2.0]

Window Jamb_WANZ/Supported



MATERIALS • SYSTEMS • SOLUTIONS



NOTE
Refer to drawing "7.4" for sill/jamb junction plan view

Structure : By Others

- 1.1 Concrete
- 1.2 Timber
- 1.3 Internal Lining
- 1.4 Insulation
- 1.5 Window Joinery
- 1.6 Approved Sealant on PEF Rod to suit gap
- 1.7 Damp Proof Course/Membrane
- 1.8 WANZ Support Bar
- 1.9 Window Head Flashing

AliClad Cladding System

- 2.0 AliClad Elements :
- 2.1 AliClad Vertical Shiplap Weatherboard Cladding
- 2.2 AC-Starter - Std. MILL
- 2.3 AC-Clamp Channel - Std. MILL

- 3.0 AlphaRail20 -
- 3.1 AlphaClip -
- 3.1b AlphaClip3 -
- 3.1c AlphaClip5 -
- 3.1d AlphaClip10 -

Two Piece Flashing & Junction Elements :

- 4.0 J-Mould Base -
- 4.1a J-Mould Face -
- 4.2 Drained B.o.C. Base -
- 4.3a Internal Corner Base -
- 4.3b Internal Corner Face -
- 4.4a External Corner Base -
- 4.4b External Corner Base -
- 4.5a Vertical Jointer Base -
- 4.5b Vertical Jointer Face -
- 4.6 Jamb Clip -

Cladding Support Elements :

- 20mm AL. Cavity Battens
- AL. 1.6mm Packer
- AL. 3mm Packer
- AL. 5mm Packer
- AL. 10mm Packer

- 4.7 Sill Clip Face - Flush Window -
- 4.8 BigZed -
- 4.9 Sill Clip Face - Punch Window -
- 4.10 Vermin Flashing -

- 4.11a Typ.1 Jamb Tray Right - For Windows With WANZ
- 4.11b Typ.1 Jamb Tray Left - For Windows With WANZ
- 4.12a Typ.2 Jamb Tray Right - For Windows Without WANZ
- 4.12b Typ.2 Jamb Tray Left - For Windows Without WANZ

Auxiliary Cladding System Components

- 5.0 PC on Request
- Std. Range PC
- Std. MILL
- 5.1 E2/AS1 Table 23 Compliant Membrane system
- 5.2 Sill Tape -150mm
- 5.3 Fabric Flashing Tape - 60mm
- 5.4 Wet Seal Adhesion Tape
- 5.5 Closed Cell EPDM Tape

Fixings:

- 6.0 HexTek SD Screw 10mm Hex
- 6.1 SS304 10gx20mm HexTek SD Screw #2 Sq.Dr
- 6.2 SS304 8gx35mm HexTek Screw 10mm Hex
- 6.3 SS304 12gx75mm PH SD ST Screw
- 6.4 SS304 8gx 16mm Truss Pop Rivet
- 6.5 AS73 4-4 CS SD Screw
- 6.6 M4x16mm CS ST Screw
- 6.7 SS304 8gx 20mm

Aluminium Flashings:

- 7.0 Std. Range PC
- 7.1 Jamb Flashing-
- 7.2 AL. 1.6mm Custom Folded
- 7.3 AL. 1.8mm Custom Folded
- 7.4 AL. 50X20X3mm Angle
- 7.5 AL. 40X20X1.6mm Angle

Suggested Membrane & Tapes :

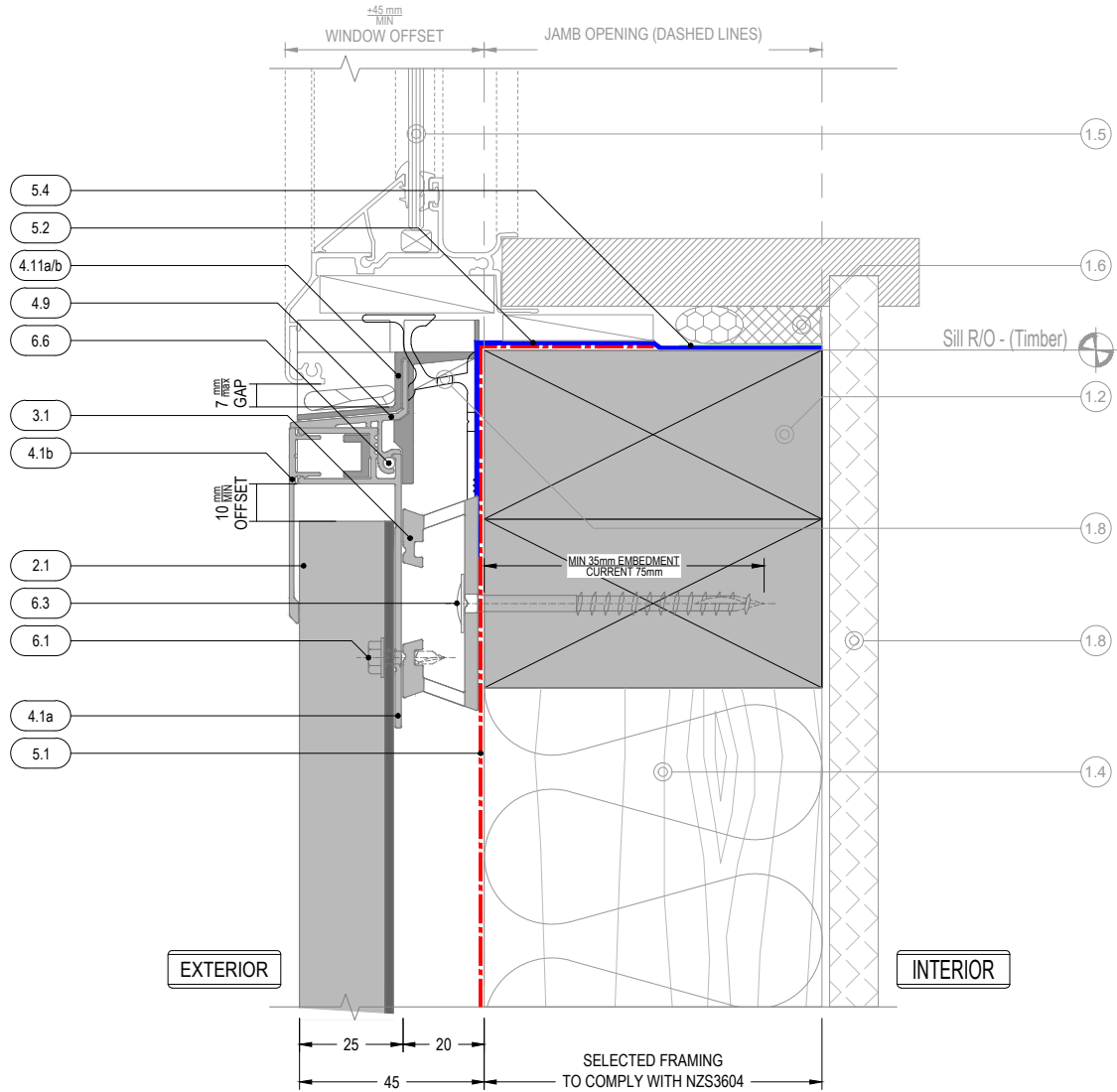
Detail Number

AC-V-AR-7.5

Version

SEP 2022 [v2.0]

Window Head_WANZ/Supported



NOTE
Refer to drawing "7.4" for sill/jamb junction plan view

Structure : By Others

- 1.1 Concrete
- 1.2 Timber
- 1.3 Internal Lining
- 1.4 Insulation
- 1.5 Window Joinery
- 1.6 Approved Sealant on PEF Rod to suit gap
- 1.7 Damp Proof Course/Membrane
- 1.8 WANZ Support Bar
- 1.9 Window Head Flashing

AliClad Cladding System

- 2.0 AliClad Elements :
- 2.1 AliClad Vertical Shiplap Weatherboard Cladding
- 2.2 AC-Starter - Std. MILL
- 2.3 AC-Clamp Channel - Std. MILL

- 3.0
- 3.1 AlphaRail20 -
- 3.1a AlphaClip -
- 3.1b AlphaClip3 -
- 3.1c AlphaClip5 -
- 3.1d AlphaClip10 -

Two Piece Flashing & Junction Elements :

- 4.0
- 4.1a J-Mould Base -
- 4.1b J-Mould Face -
- 4.2 Drained B.o.C. Base -
- 4.3a Internal Corner Base -
- 4.3b Internal Corner Face -
- 4.4a External Corner Base -
- 4.4b External Corner Base -
- 4.5a Vertical Jointer Base -
- 4.5b Vertical Jointer Face -
- 4.6 Jamb Clip -

Cladding Support Elements :

- 20mm AL. Cavity Battens
- AL. 1.6mm Packer
- AL. 3mm Packer
- AL. 5mm Packer
- AL. 10mm Packer

PC on Request

- Std. Range PC
- Std. MILL
- PC on Request
- Std. Range PC
- Std. MILL
- PC on Request
- Std. Range PC
- Std. MILL
- PC on Request
- Std. Range PC
- Std. MILL

- 4.7 Sill Clip Face - Flush Window -
- 4.8 BigZed -
- 4.9 Sill Clip Face - Punch Window -
- 4.10 Vermin Flashing -

Mechanical Windowsill Drainage Elements :

- 4.11a Typ.1 Jamb Tray Right - For Windows With WANZ
- 4.11b Typ.1 Jamb Tray Left - For Windows With WANZ
- 4.12a Typ.2 Jamb Tray Right - For Windows Without WANZ
- 4.12b Typ.2 Jamb Tray Left - For Windows Without WANZ

Auxiliary Cladding System Components

- 5.0
- 5.1 E2/AS1 Table 23 Compliant Membrane system
- 5.2 Sill Tape -150mm
- 5.3 Fabric Flashing Tape - 60mm
- 5.4 Wet Seal Adhesion Tape
- 5.5 Closed Cell EPDM Tape

Std. Range PC

- Std. MILL
- Std. Range PC
- PC on Request
- Std. Range PC
- Std. MILL
- Std. Range PC
- Std. MILL
- Std. Range PC
- Std. MILL

7.0

- 7.1 Jamb Flashing-
- 7.2 AL. 1.6mm Custom Folded
- 7.3 AL. 1.8mm Custom Folded
- 7.4 AL. 50X20X3mm Angle
- 7.5 AL. 40X20X1.6mm Angle

- 6.0
- 6.1 SS304 10gx20mm
- 6.2 SS304 8gx35mm
- 6.3 SS304 12gx75mm
- 6.4 SS304 8gx 16mm
- 6.5 AS73 4-4
- 6.6 M4x16mm
- 6.7 SS304 8gx 20mm

Fixings:

- HexTek SD Screw 10mm Hex
- PH SD Screw #2 Sq.Dr
- HexTek Screw 10mm Hex
- PH SD ST Screw
- Truss Pop Rivet
- CS SD Screw
- CS ST Screw

Aluminium Flashings:

- Std. Range PC

Detail Number

AC-V-AR-7.6

Version

SEP 2022 [v2.0]

Window Sill_WANZ/Supported